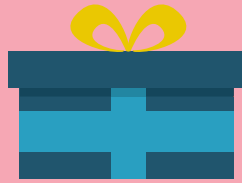


CHRISTMAS IN LEEDS 2018



UNIVERSITY OF LEEDS

WHAT'S ON THIS SEASON

ARE YOU STAYING IN LEEDS OVER THE WINTER BREAK?

Christmas in Leeds is an annual programme for all students staying in Leeds over the holidays, providing the chance to meet others, experience Christmas traditions and find out about help and support.

From film and games nights, volunteering opportunities and trips to see sports matches, there are lots of activities to keep you entertained during this period and make your Christmas in Leeds one to remember!

Join the Christmas in Leeds Facebook group to connect with others, share events and plan your holiday:

www.facebook.com/groups/christmasinleeds2018

Many events are family friendly and welcome students with partners and children in Leeds. You will be able to just turn up to some events, others require booking in advance.

For more information on each event and to buy tickets or reserve your place, visit:

<http://students.leeds.ac.uk/outofterm>



EVENTS ON CAMPUS



Every Monday
(except 24 and 31 December)

Global Café

(LUU Common Ground,
17.30 - 19.30)

A great place for UK and international students to relax with friends and meet new people. Free, just turn up, family friendly

Every Wednesday
(except 26 December)

International Students Club

(Emmanuel Centre,
18.00 - 19.45)

This friendly club offers refreshments, a chance to chat and different activities each week. UK students are also very welcome. Free, just turn up, family friendly

Every Friday
(except 28 December)

Sketch Club

(Stanley & Audrey Burton
Gallery, Parkinson Building,
12.30 - 15.30)

Whether you can stay for 10 minutes or 3 hours, drop in and draw with all materials provided. Free, just turn up

Monday 3 December

LUU Festive Treat Share

(LUU Room 6,
12.00 - 14.00)

Try festive treats from around the globe. Free, book a place

Tuesday 4 December

University Carol Service

(Great Hall, 17.15 - 18.15)

Celebrate the Christmas season with carols, excerpts from the Christmas story and mince pies. Free, just turn up, family friendly

Wednesday 5 December

An M&S Christmas Food Workshop

(M&S archive,
13.00 - 14.30)

Marks and Spencer started in 1884 in Leeds. Discover the history of M&S Christmas food marketing, branding and packaging. Free, book a place

Explore Leeds Christmas Walk

(LUU steps, 14.00 - 15.30)

A guided Christmas-themed walk for postgraduate researchers and international students. Free, book a place

Thursday 6 December

Mikolajki -

Secret Santa Book Swap

(LUU Common Ground,
18.00 - 20.00)

A festive book swap event based on the Polish tradition Mikolajki, a gift exchange. Free, book a place

Monday 10 December

Sustainable Holiday Crafts

(LUU Room 6,
11.00 - 14.30)

Learn how to make sustainable festive crafts. Free, book a place

Tuesday 11 December

Winter Unity Starlight Event

(Level 12 Common Room,
Marjorie and Arnold Ziff
Building, 12.00 - 14.00)

Join others from across campus for a relaxing lunch. Free, just turn up, family friendly



EVENTS ON CAMPUS

Wednesday 12 December Christmas Decoration Craft Evening

(LUU Common Ground,
18.00 - 20.00)
Create your own Christmas
decorations as you enjoy a
hot drink and mince pie.
£5, book a place

Monday 17 December Ginger bread decorating

(LUU Common Ground,
12.00 - 13.00)
Decorate some delicious
Gingerbread biscuits.
£3, book a place

Christmas Film Screening – Elf

(LUU Pyramid,
17.00 - 19.15)
Join Buddy the Elf for the evening
as he travels from the North Pole
to New York City. Free, book a
place, family friendly

Tuesday 18 December Tote Bag decorating

(LUU Common Ground,
11.00 - 13.00)
Decorate a tote bag as a
handmade gift for a friend.
£5, book a place

Christmas in Leeds Social

(Level 12 Common Room,
Marjorie and Arnold Ziff
Building, 14.00 - 16.00)
Come along to meet others who
will be staying in Leeds over
Christmas. There will be tea,
cake, crafts and games! Free,
book a place, family friendly

Wednesday 19 December Traditional Christmas Meal

(University House,
12.30 - 14.30)
Join us for a Christmas meal
and enjoy some traditional
entertainment! Vegetarian
options will be available.
Free, book a place

Felt stocking making

(LUU Common Ground,
15.00 - 17.00)
Hand sew a traditional
Christmas stocking for
Father Christmas to fill with
treats on Christmas eve.
£3, book a place

Thursday 20 December Global Games Night – December edition

(LUU Common Ground,
18.00 - 19.00)
Come to Common Ground for a
relaxed evening of games from
across the globe. Free, book a
place, family friendly

Coffee Connections

(Level 12 Common Room,
Marjorie and Arnold Ziff
Building 12.00 - 14.00)
For students, staff and their
partners and families to meet
and enjoy free tea, coffee and
cake. Free, just turn up,
family friendly

Friday 21 December

Explore Leeds Christmas Walk

(LUU steps, 12.30 - 14.00)
A Christmas themed guided
walk around Leeds suitable for
all ages. Free, book a place,
family friendly

Campus Christmas Treasure Hunt

(LUU Union Square,
11.00 - 15.00)
Follow the festive clues found on
baubles hidden in secret locations
across campus. Free, book a
place, family friendly



EVENTS ON CAMPUS

**Friday 21 December –
Wednesday 2 January 2019**
**University closed and will
reopen on 2 January 2019.**

Check out our off-campus events on the following page

Wednesday 2 January

New Year painting

(LUU Foyer, 13.30 - 15.30)

Celebrate the New Year with some freestyle painting. £2, book a place

Thursday 3 January
**Global Games Night –
January edition**

(LUU Common Ground,
18.00 - 19.00)

Come to Common Ground for a relaxed evening of games from across the globe. Free, book a place, family friendly

Wednesday 9 January
**Feeling at Home in Leeds
Group Workshop**

(Level 12 Common Room,
Marjorie and Arnold Ziff
Building, 13.30 - 16.30)

A workshop for international students to help you to meet others, share your experiences and settle into life in Leeds. Free, book a place

Friday 11 January
Lego Social

(Level 12 Common Room,
Marjorie and Arnold Ziff
Building, 13.00 - 16.30)

Come along for fun LEGO building challenges followed by a showing of the LEGO movie. Free, just turn up, family friendly

For more information on each event and to buy tickets or reserve your place, visit:
<http://students.leeds.ac.uk/outofterm>



EVENTS OFF CAMPUS

Whether you come to these events on your own or with friends or family, friendly student assistants will introduce you to new people and make sure everyone has a great time.

Some ticketed events are subsidised so may be cheaper than buying elsewhere. Please book early to reserve your place.

Saturday 1 December

Freedom4girls

Volunteering Taster

(Meet at Grand Opera House, 12.30 - 16.00)

Take part in a creative workshop to create sanitary kits for women and girls in the UK and developing countries. Free, book your place

Explore Brimham Rocks

Walking Trip

(Meet at Parkinson steps, 10.00 - 17.00)

Explore some weird and wonderful rock formations on this fantastic countryside walk. £12, book your place

Sunday 2 December

Explore Conway and Chester

(Meet at Parkinson steps, 08.00 - 20.00)

Explore the beautiful and historic Conwy in Wales and Chester in England, all in one day. £20, book your place

Sunday 9 December

Santa Dash

Volunteering Taster

(Meet at Leeds Town Hall, 08.30 - 12.00)

Volunteer as an Event Marshall to support runners dressed as Santa Clause as they dash through the city to raise money for St Gemma's Hospice. Free, book your place

Bakewell to

Chatsworth Walking Trip

(Meet at Parkinson steps, 09.00 - 17.30)

Walk from the town of Bakewell in the Peak District (famous for its tarts!) to the historic Chatsworth House. £12, book your place

Saturday 22 December

Pantomime:

Beauty and the Beast

(Carriageworks Theatre, Millennium Square, 18.00 - 21.00)

In true British Christmas tradition, be ready for costumes, comedy, music and mayhem in this magical performance of a classic fairytale. £10, book your place, family friendly

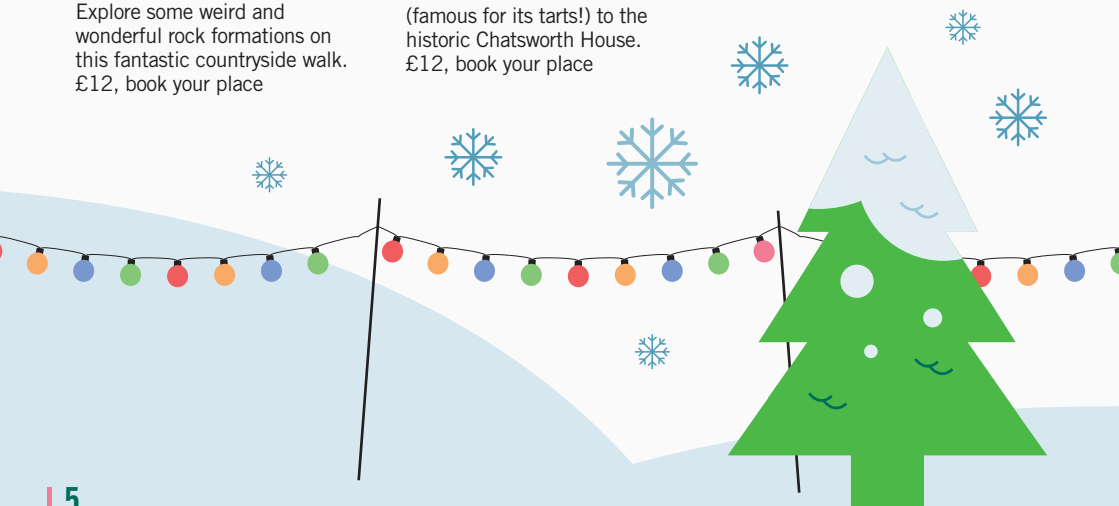
Tuesday 25 December

Rainbow Junk-tion

Christmas Lunch

(Rainbow Junk-tion Cafe, All Hallows Church LS6 1NP, 12.00 - 15.00)

Enjoy a tasty meal made from food that would otherwise be wasted at this pay-as-you-feel community Christmas lunch. Pay by donation on the day, book your place for free, family friendly



EVENTS OFF CAMPUS



Wednesday 26 December

Rugby Match:

Leeds vs Wetherby

(Meet outside Sainsbury's in Headingley, 10.30 - 13.30)

Feel the excitement of watching a live Rugby match – an experience not to be missed! £5-£15, book your place before 16 December, family friendly

Saturday 29 December

Football Match: Leeds vs Hull

(Meet outside the Corn Exchange in city centre, 12.45 - 18.00)

Feel the excitement of watching a live football match – an experience not to be missed! £5-£20, book your place before 16 December, family friendly

Friday 4 January

Oxfam Online Volunteer Taster

(Meet at Leeds Train Station, 09.15 - 15.30)

Spend a day behind the scenes at Oxfam's warehouse to help sort and despatch clothing to a worldwide audience to raise money for Oxfam. Free, book your place

Sunday 6 January

Trip to Saltaire

World Heritage site

(Meet at Parkinson Steps, 10.00 - 15.00)

Explore the Victorian model village of Saltaire. You could follow the sculpture trail, take part in a walking tour or visit the historic Salts Mill. £5-10, book your place, family friendly

Many see the festive period as a time for helping others and taking part in community activities. For more volunteering opportunities visit:

leedsforlife.leeds.ac.uk/Opportunity/Index/doinggoodleeds.org.uk/volunteering-in-leeds

EVENTS IN THE CITY

Why not book tickets for traditional shows such as carol concerts, ballets, and musicals? Or visit the stately homes of Lotherton Hall or Temple Newsam for their traditional Christmas experiences.

For more events in the city including Christmas markets, family friendly events and performances, visit:

<http://students.leeds.ac.uk/outofterm>

For more events across the city visit:

www.visitleeds.co.uk/whats-on
<http://whatson.leeds.gov.uk>

For more information on each event and to buy tickets or reserve your place, visit:

<http://students.leeds.ac.uk/outofterm>



DECEMBER CALENDAR

Monday	Tuesday	Wednesday	Thursday	Friday	Saturday	Sunday
					01 Freedom4girls Volunteering Taster 12.30 - 16.00 Explore Brimham Rocks Walking Trip 10.00 - 17.00	02 Explore Conway and Chester 08.00 - 20.00
03 Global Café 17.30 - 19.30 LUU Festive Treat Share 12.00 - 14.00	04 University Carol Service 17.15 - 18.15	05 An M&S Christmas Food Workshop 13.00 - 14.30 Explore Leeds Christmas Walk 14.00 - 15.30 International Students Club 18.00 - 19.45	06 Mikolajki - Secret Santa Book Swap 18.00 - 20.00	07 Sketch Club 12.30 - 15.30	08	09 Santa Dash Volunteering Taster 08.30 - 12.00 Bakewell to Chatsworth Walking Trip 09.00 - 17.30
10 Global Café 17.30 - 19.30 Sustainable Holiday Crafts 11.00 - 14.30	11 Winter Unity Starlight Event 12.00 - 14.00	12 International Students Club 18.00 - 19.45 Christmas Decoration Craft Evening 18.00 - 20.00	13	14 Sketch Club 12.30 - 15.30	15	16
17 Global Café 17.30 - 19.30 Gingerbread decorating 12.00 - 13.00 Christmas Film Screening – Elf 17.00 - 19.15	18 Tote Bag decorating 11.00 - 13.00 Christmas in Leeds Social 14.00 - 16.00	19 International Students Club 18.00 - 19.45 Traditional Christmas Meal 12.30 - 14.30 Felt stocking making 15.00 - 17.00	20 Global Games Night – December edition 18.00 - 19.00 Coffee Connections 12.00 - 14.00	21 Sketch Club 12.30 - 15.30 Explore Leeds Christmas Walk 12.30 - 14.00 Campus Christmas Treasure Hunt 11.00 - 15.00	22 University Closed Pantomime: Beauty and the Beast 18.00 - 21.00	23 University Closed
24 University Closed Christmas Eve	25 University Closed Christmas Day Rainbow Junk-tion Christmas Lunch 12.00 - 15.00	26 University Closed Boxing Day Rugby Match: Leeds vs Wetherby 10.30 – 13.30	27 University Closed	28 University Closed	29 University Closed Football Match: Leeds vs Hull 12.45 - 18.00	30 University Closed
31 University Closed New Years Eve						

EVENT COLOUR KEY:



University Event



LUU Event



Chaplaincy Event

JANUARY CALENDAR



Monday	Tuesday	Wednesday	Thursday	Friday	Saturday	Sunday
	01 University Closed New Years Day	02 New Year painting 13.30 - 15.30 International Students Club 18.00 - 19.45	03 Global Games Night – January edition 18.00 - 19.00	04 Oxfam Online Volunteer Taster 09.15 - 15.30 Sketch Club 12.30 - 15.30	05	06 Trip to Saltaire World Heritage site 10.00 - 15.00
07 Global Café 17.30 - 19.30	08	09 Feeling at Home in Leeds Group Workshop 13.30 - 16.30 International Students Club 18.00 - 19.45	10	11 Sketch Club 12.30 - 15.30 Lego Social 13.00 - 16.30	12	13
14 Exam Period Begins	15	16	17	18	19	20
21	22	23	24	25 Exam Period Ends	26	27
28 Teaching Begins						

EVENT COLOUR KEY:



University Event



LUU Event



Chaplaincy Event

INFORMATION AND SUPPORT

The festive season can be a busy time of year. The city centre and services such as public transport may be more crowded than usual.

On the other hand, the University campus is quieter than during term-time as many students travel to other cities or countries. But there are still plenty of events and activities for those who stay in Leeds. While you're in Leeds over Christmas, don't forget to plan ahead to make sure you have an enjoyable holiday. Here is some useful information about changes to services during the Christmas and New Year period:

SERVICES IN THE CITY

Shops

Shops may have increased or reduced opening hours over the festive period. Visit the individual shops' websites to find their seasonal opening hours. Most shops will be closed on Christmas Day and New Year's Day so buy food and provisions in advance.

Restaurants

If you want to eat out over Christmas, make sure to book ahead of time as restaurants get booked up quickly during the holidays, especially on Christmas Day.

Public transport

There will be limited or no services on some days, including 25 and 26 December and 1 January. Services can also be disrupted by winter weather, particularly snow.

Check for additional travel disruption or timetable changes before you make your journey.

www.wymetro.com

Here's a list of some local taxi services, which can be booked in advance:

Amber Cars

0113 202 2117

Royal Cars

0113 230 5000

Arrow Private Hire

0113 258 5888

Wheels Taxis

0113 249 9999

CAMPUS SERVICES

University of Leeds

The University closes on 21 December and re-opens on 2 January 2019.

Leeds University Union

Your Students' Union closes on 21 December and re-opens on 2 January 2019.
0113 380 1400
www.luu.org.uk

The Edge

Some University sports facilities can be accessed over the holidays. The Edge run a Christmas offer with 5 or 12-day memberships for £5 or £10. See their opening hours at <https://sport.leeds.ac.uk>

Email: edgemembership@leeds.ac.uk

University Residences

If you live in halls of residence and are staying around this winter, make sure you're part of your halls Facebook group to keep up to date with what is happening and to connect with other students still around. If you have any ideas for events or activities you'd like to see in your halls over the festive period, email residencelife@leeds.ac.uk

Study spaces

University of Leeds Libraries Libraries will be closed whilst the University is closed. Visit <https://library.leeds.ac.uk/locations> for the opening times of all University libraries.

Leeds Central Library

The city's Central Library will be closed from 24-26 December and on 1 January. It offers free computer access, a quiet study area and free WiFi. For more information and opening times, visit www.leeds.gov.uk/leisure/Pages/Central-library.aspx

Local libraries can be accessed across the city. To find your nearest library, visit: www.leeds.gov.uk/leisure/Pages/Your-library.aspx

University of Leeds Computer Clusters

24 hour IT clusters can be accessed throughout the holidays using a security keypad. Find more information here: <https://infoscreen.leeds.ac.uk/clustercode>

INFORMATION AND SUPPORT

HELP AND SUPPORT

LUU Help and Support

If you need help or advice, visit the Help and Support team in the LUU foyer. LUU Advice offer a range of services, including drop-in sessions, appointments, phone calls, email communication and Skype meetings. They will close on 21 December and re-open 2 January 2019.

advice@luu.leeds.ac.uk

www.luu.org.uk/student-help-support

Universities' Chaplaincy in Leeds, Emmanuel Centre.

The Chaplaincy run weekly social and prayer services and can offer help finding church services in the community. The Chaplaincy and Common Room will be open until noon on 21 December and re-open from 10am on 2 January 2019. If you need to contact a chaplain for faith or pastoral support, you can email:

chaplaincy@leeds.ac.uk or call on

0113 3435071. If you are in crisis and need Chaplaincy support out of hours, or in the holidays, call 07780 613 862.

www.leeds.ac.uk/chaplaincy

University Security Services

If you have any problems when the University is closed, you can contact the Security Office, which is available 24 hours a day, every day of the year.

175 Woodhouse Lane

security@leeds.ac.uk

General Enquiries

0113 343 5494

Emergencies Only

0113 343 2222

<https://commercialcampussupport.leeds.ac.uk/security>

Feeling at Home in Leeds online guides

Whether you've recently arrived in Leeds, or been here for some time, these interactive guides can help you make the most of all aspects of University life.

Take some time during the break to explore the student stories and activities in the guide, which will help you reflect on your experiences in Leeds so far and think about your future goals.

To access the guide for your study level visit <http://students.leeds.ac.uk/feelingathome>

For more information on our January edition of the Feeling at Home in Leeds group workshop, see the events listings.

Big White Wall

This supportive online community offers 24 hour support every day of the year. Trained counsellors are online at all times, as well as a range of helpful resources. You can go to www.bigwhitewall.com and sign up with your University email.

Samaritans

Located near the Business School, Samaritans offer 24-hour emotional support to anyone in need of someone to talk to.

116 123 or 0113 245 6789

www.samaritans.org/branches/samaritans-leeds

HOW DO PEOPLE CELEBRATE CHRISTMAS IN THE UK?

If you are experiencing Christmas in the UK for the first time, here's some information about what you can expect.

For some, Christmas Day can start with a church service, followed by eating a traditional Christmas dinner, playing board games, going on a walk and then falling asleep while watching the Queen's Speech on TV. Some people decorate their homes with colourful lights, wreaths and, of course, a Christmas tree.

Many enjoy exchanging gifts and children receive stockings filled with small gifts. You could organise a 'Secret Santa' to share gifts with friends:

www.wikihow.com/Do-a-Secret-Santa

Traditional Christmas foods include: roast turkey or vegetarian nut roast, stuffing, brussel sprouts, roast potatoes, Yorkshire puddings, mince pies and Christmas pudding. For Christmas recipes visit:

www.bbcgoodfood.com/howto/guide/complete-christmas-menu-classic

www.bbcgoodfood.com/recipes/collection/vegan-christmas



globalcommunity@leeds.ac.uk
<http://students.leeds.ac.uk/globalcommunity>

