

---

**A Presentation to**  
Colleagues

—  
**Event**  
Nexus Roadshow

—  
April 2017

# NEXUS

**NEXUS**  
UNIVERSITY  
OF LEEDS

# WHAT IS NEXUS?

**NEXUS**



**WITH  
NEXUS  
COLLABORATION  
DRIVES  
INNOVATION**



**CLIMATE  
CHANGE.  
IT'S UP TO  
NEXUS**



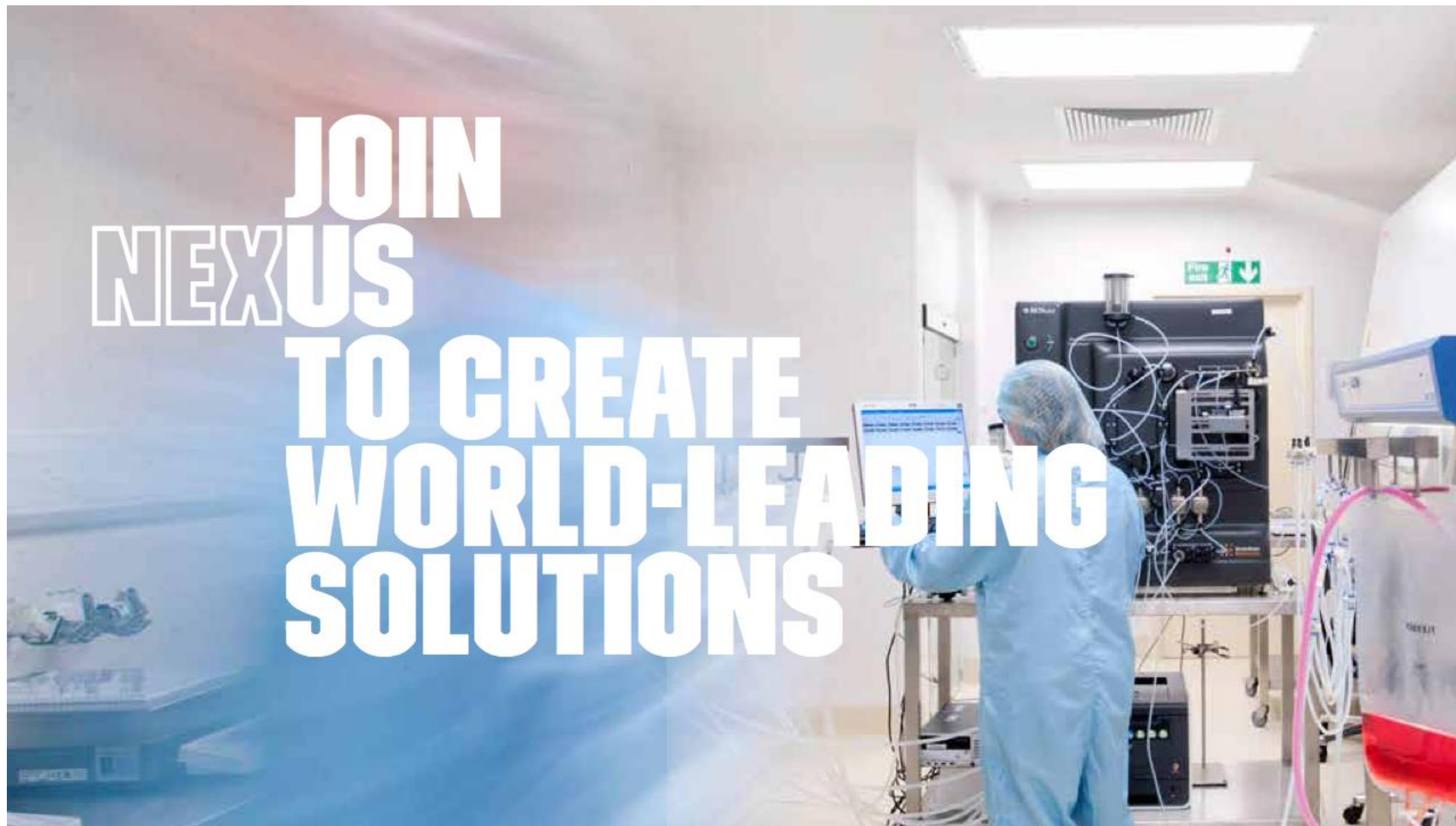




**LIFE-CHANGING  
SOLUTIONS  
DEVELOPED WITH**

**NEXUS**

**JOIN  
NEXUS  
TO CREATE  
WORLD-LEADING  
SOLUTIONS**





**DEVELOP  
BREAKTHROUGH  
IDEAS WITH  
NEXUS**



“Nexus brings together business and academic minds around shared goals to drive innovation. It’s where ideas, expertise and opportunity collide, delivering results that create new value locally, nationally and globally.”



1. A gateway to world-leading research and expertise
2. A collaborative approach to driving innovation
3. Seamless support based on academic & business needs
4. A vibrant and dynamic community
5. Exceptional facilities for researchers and partners

**WHY ARE WE  
DOING IT?**

**NEXUS**

# THE UNIVERSITY'S STRATEGIC PLAN

The University launched a new strategic plan in 2015 which set some ambitious targets:

- Grow research and innovation income to £200m p.a by 2020
- Increase research quality to > 85% 3 and 4\* publications
- Increase Postgraduate Research cohort

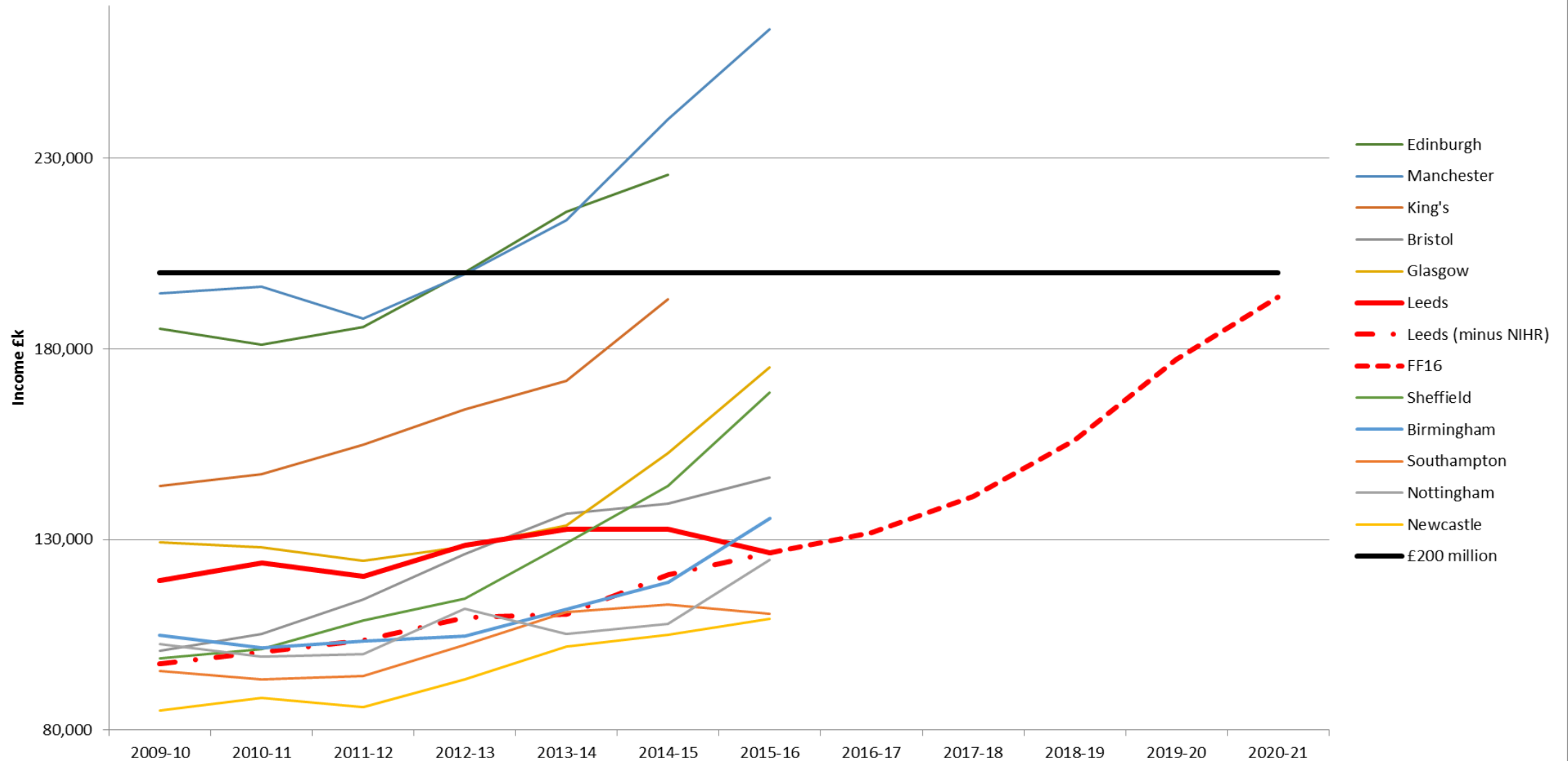




## **R&I STRATEGIC DELIVERY PLAN**

- Increase the quality and impact of our research, scholarship and knowledge exchange
- Maximise interdisciplinary opportunities to address societal grand challenges
- Maximise growth in, and diversification of, our research funding
- Promote a vibrant postgraduate and early career researcher community
- Develop and support academics to reach their full research potential
- Enhance local, national and global engagement and impact

# RESEARCH INCOME VOLUME



	Leeds	Russell Group	Sector
4* Outputs	21%	27%	22%
4* Impact	54%	54%	44%



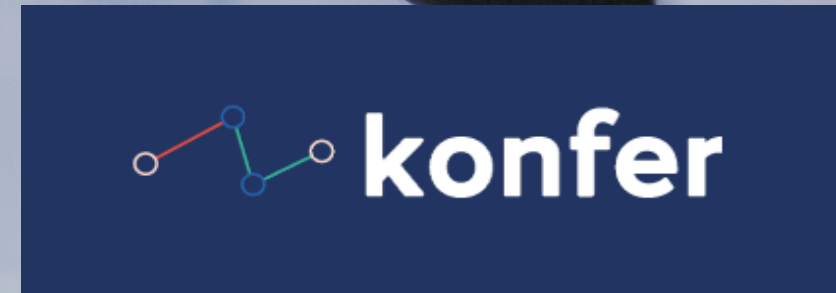
## University Activities

- Applied (user-driven) research
- Consultancy
- Licenses
- Spin-out companies
- Work-related learning
- Student / alumni start ups
- Economic/social/cultural development projects

## Perceived Services

- Development of new technology
- Product and process innovation
- Public policy analysis & evaluation
- Service improvement
- Higher level skills development
- Organisational and management development
- Wealth and job creation

# WHY – EXTERNAL CHALLENGE AND OPPORTUNITY



# WHERE?

**NEXUS**



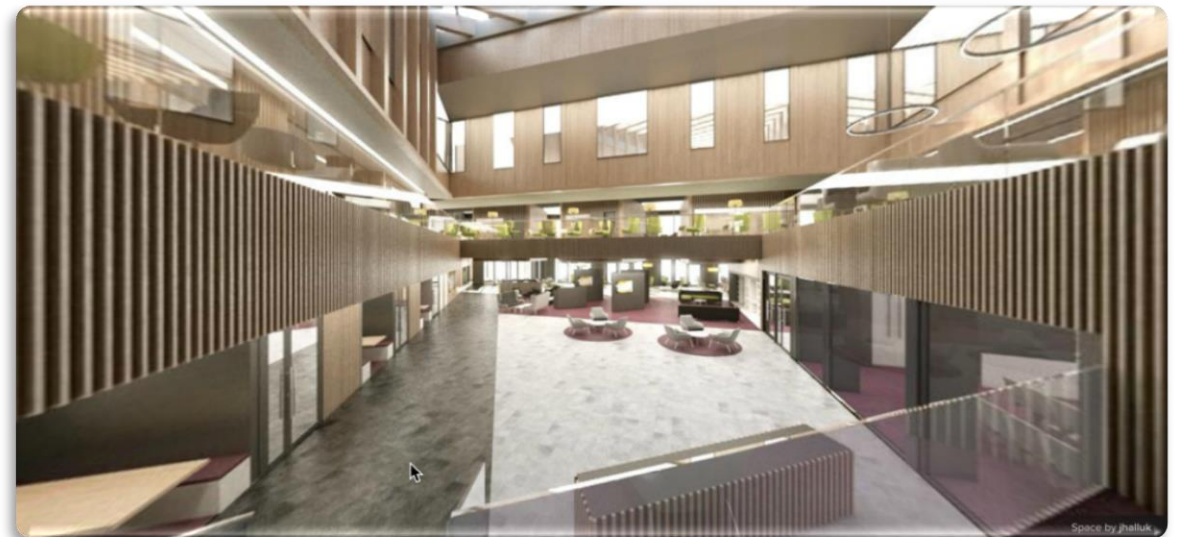
# A HIGH PROFILE GATEWAY

- New, prominent entrance to campus
- Close to city centre
- A purpose-built space for high end tech-led start-ups and corporate R&D
- A place to meet, network and collaborate



## EXCEPTIONAL FACILITIES

- Meet, Network
- Share information
- Uncover opportunities
- Lab space
- Café and business lounge
- a year round programme of tailored events



# EXCEPTIONAL FACILITIES



Lecture theatre



Seminar space



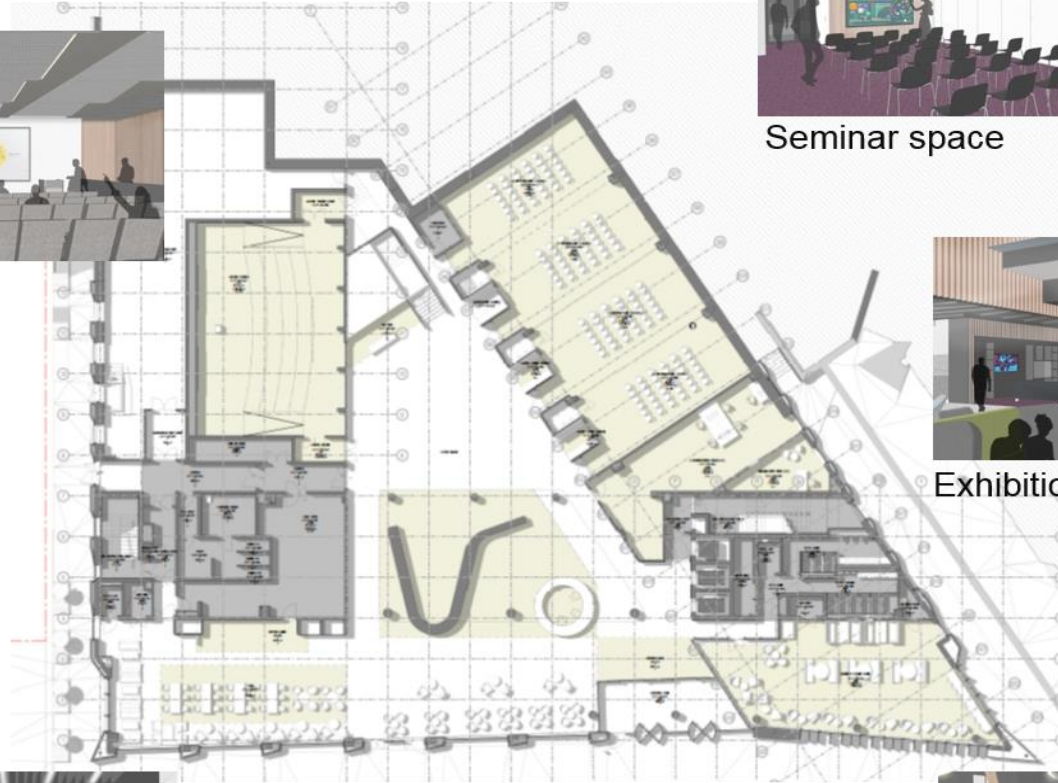
Exhibition space



Cafe



Business lounge



# HOW WILL IT WORK?

**NEXUS**



# A VIBRANT COMMUNITY

Researchers

Business

University professional services

Investors & funders

IP lawyers, market researchers

Business support agencies and networks

Enterprising students and graduates



# CREATING A VALUE CHAIN OF OPPORTUNITY

23

## 1. Targeted support to address specific challenges and secure investment:

- Contract research
- Collaborative research and innovation
- Consultancy
- Access to specialist equipment
- Access to IP and know how

## 2. Support to access student and graduate talent

## 3. Support to help business develop talent and embed innovation

## HOW WILL IT WORK?

**“PEOPLE ON OUR SIDE WITH THE ABILITY TO GET THINGS DONE IN PARTNER ORGANISATIONS WOULD REALLY HELP TO SPEED THINGS UP”**



**66**

**TAKES DEDICATION TO BUILD A RELATIONSHIP – NOT JUST THE ACADEMIC, BUT JOINTLY, ACADEMIC AND RELATIONSHIP MANAGER**



## HOW WILL IT WORK?



66

**WE NEED TO THINK  
BEYOND OUR NORMAL  
RELATIONSHIP MODELS –  
IT'S NOT JUST ABOUT THE  
CURRENT PROJECT OR  
TRANSACTION.**

**NEXUS MODEL WILL  
FOCUS ON THE NEXT  
OPPORTUNITY**



A background image showing several cells, possibly cancer cells, with prominent nuclei and irregular, spiky borders. The cells are stained in shades of blue and purple, set against a dark background with small white dots.

# WHEN?

# NEXUS OPENS SEPTEMBER 2018

---

A Presentation to  
Colleagues

Event  
Nexus Open Meeting

—  
March 2017

**NEXUS**  
UNIVERSITY  
OF LEEDS

# ASK NEXUS QUESTIONS?

---

**Nexus**  
[nexusleeds.co.uk](http://nexusleeds.co.uk)

# THANK YOU

---

**Nexus**  
[nexusleeds.co.uk](http://nexusleeds.co.uk)

**NEXUS**  
UNIVERSITY  
OF LEEDS