

# CULTURE ON CAMPUS

University of Leeds  
Summer–Autumn 2016



- 
- Yorkshire Year of the Textile
  - Shakespeare 1616–2016:  
celebrating a legacy around  
the world
  - Public Art programme
- 

[www.leeds.ac.uk/events](http://www.leeds.ac.uk/events)



UNIVERSITY OF LEEDS



“The University of Leeds has made an enormous contribution to the cultural life of the nation for over a hundred years. Today we are recognised as a major centre of excellence in the arts and humanities. Our long history of innovation in research, teaching and public engagement is reflected in the rich diversity of our cultural offer, which includes public galleries, archives and museums, cultural venues and various facilities for art-making and performance. Together with the irreplaceable treasures of our collections they present a range of exciting events and opportunities throughout the year, and we very much look forward to welcoming you on our campus.”

**Sir Alan Langlands**  
Vice-Chancellor  
University of Leeds

## WELCOME to our programme of cultural events

Our campus has a breadth of outstanding cultural attractions, resources and spaces open to the public. This guide provides an overview of our cultural programme, showcasing some of our excellent research, partnerships and teaching, celebrating the thriving creative community at the University. We offer a rich diversity of cultural events and opportunities throughout the year, including theatrical productions, concerts, exhibitions and student and artist-led activities. Some of these take place on campus and some beyond it, in partnership with other organisations.

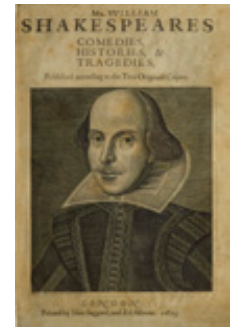
As a new departure during 2016 we are curating some of our cultural activities thematically. For example we will engage with communities through the *Yorkshire Year of the Textile* programme, exploring the rich textile heritage of the University and the wider region via participation, innovative artistic commissioning, and new research-led exhibitions. This initiative is generously supported by Arts Council England.

We are also marking two key global literary 400th anniversaries commemorating the deaths of William Shakespeare and the Chinese playwright Tang Xianzu, presenting a series of exciting events working with our partners in the UK and China. In the autumn, we are focusing on a regional interpretation,

Front cover: Mitzi Cunliffe's *Man-Made Fibres*, 1956

Opposite: Clothworkers' Centenary Music Hall

Right: A rare copy of the *First Folio* from 1623 containing the plays of William Shakespeare, displayed in the Treasures of the Brotherton Gallery



with the opening of *For All Time: Shakespeare in Yorkshire*, in our new Treasures of the Brotherton Gallery, supported by the Heritage Lottery Fund. We will be building on our Public Art programme introduced last year, celebrating a number of new high profile sculptures being installed on campus, the conservation of key works, innovative dance responses, and a lively literary strand with public poetry commissioning and regular readings.

Our partnership work is a key to our success, creating new ways of approaching culture. We have nurtured a breadth of national and regional cultural partnerships including our established institutional relationships with Marks & Spencer and its Company Archive and the unique DARE collaboration with Opera North.

We hope you will enjoy visiting our cultural venues, engaging with our campus spaces and participating in our programme of cultural events.

### Professor Ann Sumner

Head of Cultural Engagement  
University of Leeds





## THE YORKSHIRE YEAR OF THE TEXTILE

The Yorkshire Year of the Textile is inspired by the region's rich textile heritage, reflected in the history of the University of Leeds and supported by Arts Council England.

In 2016, we are focusing on new research and artistic and community engagement, with literary and performance strands around the theme of textiles. The University provides a unique platform to support innovative commissioning – celebrating knit and weave traditions and synthetic fibres history through creative artistic responses, performances and new exhibitions.

This year we mark the 60th anniversary of the Man-Made Fibres Building (now Clothworkers' South) and the sculpture by Mitzi Cunliffe. An exhibition at The Stanley & Audrey Burton Gallery entitled *Sculptor behind the Mask: Mitzi Cunliffe's work in the 1950s* celebrates the excitement around the opening of that

building in 1956, while the *Synthetic Fibres Revolution* exhibition at ULITA showcases the new research project, *The Enterprise of Culture*. Items from the *Revolutionary Fabrics* exhibition are selected from the M&S Company Archive to tell the story of how new 'wonder fabrics' such as Crimplene, Bri-nylon and Tricel had a huge impact on clothing following World War II.

Learn to hand-knit while listening to and writing poetry at our innovative *Knit-Lit* workshops, and explore the latest historical understanding of Yorkshire's textile industries and the inspiration this gives contemporary artists in the *History Threads* workshops. Look out too for knitted Community Canopies, gradually being installed across campus over the summer to transform our open spaces. Our partners include Leeds Museums & Galleries, Harewood House Trust, SAA-uk, and the University of Huddersfield.

Far left: *Coronation Fabric* designed by Mitzi Cunliffe, 1953 from *Sculpture Behind the Mask* exhibition

Left: *The Knitting Machine*, by Elizabeth Gaston and Jane Scott, responding to Cunliffe's work

Below: William Gott's *Pattern Book of Dyehouse Recipes*, 1815, in the Treasures of the Brotherton Gallery

Bottom: Children learning to hand-knit



### KNIT-LIT WORKSHOPS

Learn to hand-knit, participate in the production of major hand-knit textile sculptures, share textile memories, and create poetry.

Join us at the Leeds Wool Festival at **Leeds Industrial Museum at Armley Mills** for a knit workshop on **Saturday 4 June, 10am–4pm** and for a knit-lit workshop at **The Stanley & Audrey Burton Gallery** on **Wednesday 8 June, 2pm–4pm**

### HISTORY THREADS WORKSHOPS

Participate in panel discussions about new historical research into our textile heritage, learn how artists have been inspired by our rich textile-related collections, enjoy public poetry readings:

#### GOTT'S DYEHOUSE BOOK REVISITED

Wednesday 8 June, 12.45pm–1.30pm,  
at the Treasures of the Brotherton Gallery

#### REVISITING RUSSELL'S MARSHALL PORTRAITS

Wednesday 15 June, 12.45pm–1.30pm,  
at The Stanley & Audrey Burton Gallery

#### PRESENTING RESEARCH AND POETIC RESPONSES TO THE MARSHALL PORTRAITS

Wednesday 22 June, 12.45pm–1.30pm,  
at The Stanley & Audrey Burton Gallery

### PERFORMANCE

#### MAN-MADE FIBRES: A DANCE RESPONSE BY TURVEYWORLD DANCE

Saturday 2 July, 12pm, outside Clothworkers' South

For full details of events see [library.leeds.ac.uk/galleries-events](http://library.leeds.ac.uk/galleries-events)

Top left: *A Midsummer Night's Dream*, by Shanghai Theatre Academy at the University of Leeds in November 2015

Bottom left: *A Midsummer Night's Dream*, by stage@leeds theatre company at stage@leeds in February 2016, with 1950s costume inspired by Mitzi Cunliffe

Right: William Shakespeare's *First Folio*, on display in the Treasures of the Brotherton Gallery



## SHAKESPEARE 1616—2016: CELEBRATING A LEGACY AROUND THE WORLD

2016 marks the 400th anniversary of the death of William Shakespeare, and the University of Leeds is commemorating his global legacy in a number of exciting public events throughout the year.

Our programme opened with an innovative new production of *A Midsummer Night's Dream* at stage@leeds, with costumes inspired by the 1950s fashion icon and sculptor Mitzi Cunliffe. An art workshop and pop-up performances brought the celebrations off campus and into the city of Leeds with a fun interactive day in the Trinity shopping centre on 23 April, the day on which he died 400 years ago.

### Performance – *A Midsummer Night's DREAMING Under the Southern Bough*

The world premiere of *A Midsummer Night's DREAMING Under the Southern Bough* will take place on 27 July at stage@leeds.



This performance has been developed through an international partnership with researchers in China. This ongoing project examines the relationship between Shakespeare and the great Ming Dynasty playwright Tang Xianzu, who also died 400 years ago. Working on the common theme of dreams, students in Beijing and Yorkshire are rehearsing simultaneously before premiering the production here at Leeds, and then performing at the Edinburgh Festival Fringe, and several venues in China.

This ground-breaking project affords two groups from two cultures the opportunity to explore, understand and appreciate each other's similarities and distinctions through the work of two great writers and the shared language of theatre.

### Exhibition – *For All Time: Shakespeare in Yorkshire*

From 5 September 2016 to the end of January 2017, a dedicated exhibition, *For All Time: Shakespeare in Yorkshire*, opens in the Treasures of the Brotherton Gallery. This is the first public exhibition of the rare Shakespeare materials left to the University of Leeds Library by Lord Brotherton. Discover how Shakespeare dramatised Yorkshire history and what he and his contemporaries had to say about regional identity.

### Conference – *Yorkshire Shakespeare*

This exhibition coincides with the one-day conference *Yorkshire Shakespeare*, in which leading researchers are joined by renowned poets to explore the power of voice in experiencing Shakespeare today.

[www.leeds.ac.uk/shakespeare](http://www.leeds.ac.uk/shakespeare)



Left: Simon Fujiwara's *A Spire*, 2015, outside the Laidlaw Library

Clockwise from the top: Public Art trail maps can be picked up from The Stanley & Audrey Burton Gallery and the information point in Parkinson Court

A detail of Hubert Dalwood's *Untitled bas-relief*, 1961, recently installed outside stage@leeds

A detail of Allan Johnson's *A Celebration of Engineering Sciences*, 1963, outside the Mechanical Engineering Building

Mitzi Cunliffe's *Man-Made Fibres*, sited on Clothworkers' South

## PUBLIC ART ON CAMPUS

**Public art enhances the experience of local communities, visitors, students and staff, reflecting the academic research themes and learning activities of university life.**

The new public art trail celebrates the role our textile heritage has played in our historic campus sculpture, from inspiring Mitzi Cunliffe's newly conserved *Man-Made Fibres* to the works presented by the textile philanthropist Stanley Burton (1914–1991). Stanley admired William Chattaway, acquiring two of his works for the University, and in 1982 initiated the commissioning of Quentin Bell's *Levitating Figure*.

Exciting developments on campus this year began in January, when Allan Johnson's *A Celebration of Engineering Sciences*, 1963 (outside the Mechanical Engineering Building) was one of 41 post-war public art works to be listed Grade II by Heritage England. In May, we celebrated the arrival on campus of the Hubert Dalwood's *Untitled bas-relief*, 1961. Some former students may recognise

the iconic large aluminium bas-relief frieze from the refectory building at the hall of residence, Bodington Hall, commissioned while Dalwood was a Gregory Fellow at the University of Leeds from 1955. In 2012 the mural relief was listed with Grade II status. After Bodington Hall closed and was later demolished, the sculpture was removed, conserved and re-sited on the side of stage@leeds building at the heart of our campus. Other new art on campus includes the long term loan of Barbara Hepworth's *Dual Form*, 1965, on loan from Leeds Art Fund through Leeds Museums & Galleries, also sited near stage@leeds. Public Poetry inspired by our artworks remains a strong strand of the programme.

See our website for further details and regular updates and events [library.leeds.ac.uk/public-art](http://library.leeds.ac.uk/public-art)



### Nylon! Acrylic! Polyester!

It was a woman wearing gloves and roses who showed us in stone how to spin and weave a fabric out of the threads of our lives, how to hold it in our two hands without warp or weft unravelling, how to make something new, material bearing our name, how to pitch it so the rain runs through, bonding art and science, skin and skein.

### Linda France

Creative Writing Fellow (2015–2016). Poet's response to *Man-Made Fibres* by Mitzi Cunliffe

**PUBLIC ART SHORT: LEADING UP TO LENTEN COVER**  
Wednesday 11 May, 12.45pm, at The Stanley & Audrey Burton Gallery

Student volunteer Ellen Brown talks to sculptor Michael Lyons about his sculpture on Western Campus

**PUBLIC ART SHORT: CELEBRATING DALWOOD**  
Wednesday 18 May, 12.45pm, at The Stanley & Audrey Burton Gallery

Nicola Wray of Heritage England discusses Dalwood's large bas-relief of 1961

**PUBLIC ART SHORT WALK: TEXTILE THREADS**  
Wednesday 25 May, 12.45pm, at The Stanley & Audrey Burton Gallery

with Nicola Stephenson, Public Art Project Co-ordinator

**PUBLIC ART SHORT: WELCOME TO BARBARA HEPWORTH**  
Thursday 23 June, 12.45pm, at The Stanley & Audrey Burton Gallery

with Layla Bloom, Curator, The Stanley & Audrey Burton Gallery



Left: Anna Tcybuleva, winner of the Leeds International Piano Competition, performing at the finals in 2015

Below: Inside the Clothworkers Centenary Concert Hall



## CLOTHWORKERS CENTENARY CONCERT HALL

The Clothworkers Centenary Concert Hall, originally a Victorian church that has been beautifully restored into a 250-seat concert hall complete with two grand pianos and a chamber organ, is home to the University of Leeds International Concert Series.

The Series offers a hugely varied programme of public concerts – solo, chamber and orchestral, with repertoire stretching from the 14th to 21st centuries. Events take place during University term time with a popular series of Friday lunchtime recitals alongside full length evening and weekend concerts. The Concert Series supports young performers and offers a platform for regular School of Music student recitals.

Continued collaboration with Opera North facilitates performances from the chorus, orchestra and their soloists. The University of Leeds is a key partner in the Leeds International Piano Competition, which recognises and celebrates new talent from across

the world. Some of the world's greatest pianists such as Murray Perahia, Radu Lupu and Dimitri Alexeev launched their careers by taking first prize. Prize winners from 'the Leeds' are regularly featured, and in recent years the Series has hosted other celebrated performers including Martin Roscoe, The Sixteen, Dame Emma Kirkby, The Sacconi Quartet, Jeremy Huw Williams, I Fagiolini, The Brodsky Quartet and Katherine Broderick.

For a full programme visit [concerts.leeds.ac.uk](http://concerts.leeds.ac.uk)

## STAGE@LEEDS

stage@leeds is a public, contemporary performance space dedicated to artist development and supporting new work.

Regularly hosting a broad range of productions by a variety of theatre makers, stage@leeds provides a dynamic, creative and supportive environment for artists, researchers and practitioners.

For full and updated listings visit [stage.leeds.ac.uk](http://stage.leeds.ac.uk)



### HIGHLIGHTS FROM THE PROGRAMME

#### LABELS

**Thursday 12 May**

Worklight Theatre return from the Edinburgh Fringe and a tour of Australia with this multi-award-winning show, which contemplates identity, race and prejudice in modern Britain. Worklight Theatre have been a part of the Professional Artist Development programme for three years, and *Labels* was developed in association with the talent at stage@leeds.

#### INAUGURAL STAGE@LEEDS INTERCULTURAL THEATRE FESTIVAL

**Wednesday 27–Friday 29 July**

This three-day festival opens with the world premiere of 'A Midsummer Night's DREAMING Under the Southern Bough', an international collaboration between the University of Leeds and the University of International Business and Economics in Beijing. The festival also includes performances from Leeds-based companies including Airborne Theatre and Manic Chord.

#### YAA DEVI

**Thursday 6 October**

Indian Dance artists and stage@leeds associate artist Devika Rao present Yaa Devi, a powerful and passionate new dance work that uses traditional Indian dance styles to explore personal stories of strong women in 21st century Britain.

#### HOW TO BE A MAN

**Thursday 13 October**

Three performers, played by one man, unpack the code of manliness. From how to look and dress like a gentleman to how you hug another man, Jonathan Coleman will reveal the secrets to true manhood with 'How To Be A Man'.

Above: Outside the stage@leeds building

## THE STANLEY & AUDREY BURTON GALLERY

The Gallery displays stunning examples of European and British paintings from the University's exceptional Art Collection, with works dating back to the 17th century.

A highlight is the collection of major British 20th century art with works by Stanley Spencer, Vanessa Bell and Terry Frost. The exhibitions and displays are complemented by a lively programme of public events, including artist talks, drop-in activities, and art workshops.

[library.leeds.ac.uk/art-gallery](http://library.leeds.ac.uk/art-gallery)

Below: *Jane Marshall*, by John Russell, 1805. The portraits of Jane and John Marshall will be highlighted in the programme for Yorkshire Year of the Textile

Right: Inside The Stanley & Audrey Burton Gallery



### MICHAEL LYONS: FREEZE FRAME

Until Saturday 9 July

From surreal or dynamic forms to archways frozen in bronze, this exhibition charts the evolution of Michael Lyons' sculpture *Lenten Cover*, 1979, and spans the late 1960s–1970s, when the visual language of Lyons (b. 1943) reached maturity. Featuring collages, drawings and sculpture, the exhibition is guest-curated by Dr Judith LeGrove.

### SCULPTOR BEHIND THE MASK: MITZI CUNLIFFE'S WORK OF THE 1950s

Until Saturday 2 July

To celebrate the 60th anniversary of *Man-Made Fibres* on campus, an iconic piece of public art by Mitzi Cunliffe, this exhibition highlights Cunliffe's successful career in the 1950s, including her design of the BAFTA mask.

### FUAM GRADUATE ART PRIZE EXHIBITION 2016

Wednesday 3 August–Saturday 1 October 2016

This annual prize exhibition showcases work by recent Art and Design graduates from the University of Leeds. The finalists will be selected by an expert panel of judges, with the top prize-winning students awarded £250. This prize is kindly supported by Friends of University Arts and Music in conjunction with the School of Fine Art, History of Art and Cultural Studies, and the School of Design.



## TREASURES OF THE BROTHERTON GALLERY

The Treasures of the Brotherton Gallery opened in February 2016. This new exhibition space showcases the exceptional Special Collections held at the University of Leeds.

Highlights include a copy of Shakespeare's First Folio, beautiful medieval manuscripts and letters written by the Brontës. In addition, temporary exhibitions reveal stories from the collections in more detail. The Gallery runs a full events programme including specialist talks, creative workshops and drop-in activities.

[library.leeds.ac.uk/treasures](http://library.leeds.ac.uk/treasures)

Above: *On Conscientious Grounds* explores resistance in the First World War, a key strand of the University's Legacies of War centenary project

### ON CONSCIENTIOUS GROUNDS: OBJECTION AND RESISTANCE IN THE FIRST WORLD WAR

Until Saturday 30 July

This thought-provoking exhibition explores the lives of able-bodied men who refused to fight in the First World War. It presents first-hand experience of the men and their family and friends, through letters, artwork, diaries, postcards and other personal items.

### FOR ALL TIME: SHAKESPEARE IN YORKSHIRE

Monday 5 September

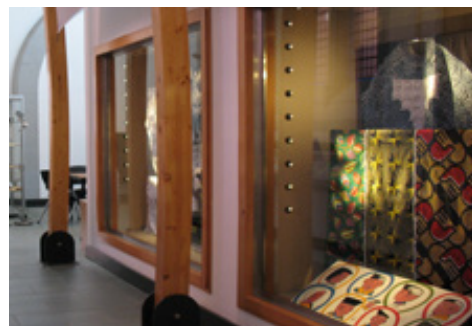
2016 marks 400 years since the death of William Shakespeare. This exhibition puts on public display for the first time the rare Shakespeare materials left to the University of Leeds Library by Lord Brotherton. Discover how Shakespeare dramatised Yorkshire history and what he and his contemporaries had to say about regional identity.



Left: Exploring the exhibition

Bottom left: Indonesian weaving, part of ULITA's collections

Below: ULITA – An Archive of International Textiles, inside St Wilfred's Chapel on the Western Campus



### THE SYNTHETICS REVOLUTION

From May 2016

Explore man-made fibres and everyday fashion through the collections of the Yorkshire Fashion Archive and ULITA. For further details, including information on the accompanying public events programme, see [www.enterpriseofculture.leeds.ac.uk](http://www.enterpriseofculture.leeds.ac.uk)

The exhibition is in collaboration with the Enterprise of Culture research project based in the School of History, funded by the Humanities in the European Research Area.



## ULITA – AN ARCHIVE OF INTERNATIONAL TEXTILES

ULITA is an archive of international textiles, housed in the beautiful St Wilfred's Chapel on the Western Campus.

ULITA holds temporary exhibitions based on aspects of its own collections and equivalent themes. Please check [ulita.leeds.ac.uk](http://ulita.leeds.ac.uk) for details and to view the collections catalogue.



## M&S COMPANY ARCHIVE

The *Marks In Time* exhibition celebrates the role that Marks & Spencer has played in peoples' lives for nearly 130 years.

The exhibition features unique artefacts that track the M&S journey from market stall to international retailer, with fascinating insights into changing lifestyles and British social history. From puddings to pants, it's all here!

[marksintime.marksandspencer.com](http://marksintime.marksandspencer.com)



### DEMENTIA AWARENESS WEEK OPEN DAY

Thursday 19 May, 10am–4pm

Especially for Dementia Awareness Week we are hosting an open day for people living with dementia. Drop in to the *Marks in Time* exhibition for a chat, get hands on with some objects from the archive and enjoy a cup of tea – our treat! No need to book, just drop in on the day.

### REVOLUTIONARY FABRICS

From Monday 27 June onwards

The Revolutionary Fabrics temporary exhibition showcases a handpicked selection of M&S garments dating from the 1940s to 1990s, highlighting the fabric innovation and scientific techniques which made such clothing possible. From 1960s lingerie to formal menswear from the 1980s, visitors will discover how synthetic fabrics are woven in to everyday life.



Above: Inside the M&S Company Archive

Above right: The M&S Company Archive building



## YORKSHIRE FASHION ARCHIVE

The Yorkshire Fashion Archive (YFA), which is publicly accessible by appointment, contains a collection of haute couture, fashion garments and everyday clothing which builds a picture of Yorkshire life as revealed through clothing in the 20th century.

The YFA provides a unique historical and cultural record of Yorkshire life. It documents clothing produced, purchased and worn by Yorkshire folk throughout the 20th century. The collection reflects changing social attitudes and multi-cultural influences, economic prosperity, global trends and the regional technical excellence in textiles and clothing over a 100 year period.

Contact details to arrange a visit to the archive are found at [www.yorkshirefashionarchive.org](http://www.yorkshirefashionarchive.org)

Below: A detail from The Synthetics Revolution exhibition, a collaboration between the Yorkshire Fashion Archive, ULITA and the HERA-funded Enterprise of Culture research project (taking place this summer at ULITA)



Left: Wax models of the head and embryological development of the brain, along with pathologist's brain knife, on display in the Gillinson Room of the Museum of the History of Science, Technology & Medicine.



## MUSEUM OF THE HISTORY OF SCIENCE, TECHNOLOGY AND MEDICINE

The Museum of the History of Science, Technology and Medicine, open by appointment, organises exhibitions and events that use objects and artefacts to explore the scientific history of the University and local region.

### HISTORY & PHILOSOPHY OF SCIENCE IN 20 OBJECTS

#### Monthly lecture series

What is the history and philosophy of science? What can it tell us about the way we see ourselves and the world around us? How can objects help us to understand what science is, and has been in the past? This monthly lecture series is exploring these questions using a variety of objects from the museum's collections.

[www.leeds.ac.uk/museumofhstm](http://www.leeds.ac.uk/museumofhstm)

## LEEDS UNIVERSITY UNION

Leeds University Union represents and supports the University's 30,000 students, but also offers a wide and varied programme of events and activities for the general public.

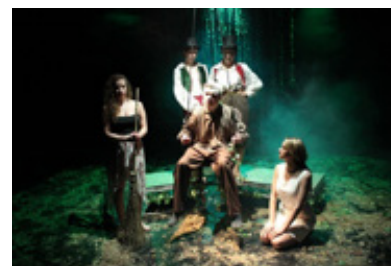
The Union is home to four performance and art spaces in the heart of the campus. Stylus, Pulse, Mine and The Refectory host a vast range of club nights and live events throughout the year, including gigs from the next big thing up to established acts, mini festivals, and some of the UK's biggest and best regular club nights. The union also hosts events from comedy nights to spoken word recitals, and other cultural events reflecting the diversity and talent of our students.

[www.unionevents.org](http://www.unionevents.org)



Above: The University Refectory has played host to the most important acts around since the late 1960s, including The Who, Led Zeppelin, Bob Marley, The Clash, The Killers, Queens Of The Stone Age, Ian Brown and Basement Jaxx

Left and lower left: Assessed productions of Molière's *The Imaginary Invalid*, by two different student companies



## WORKSHOP THEATRE

Established in 1967, the Workshop Theatre is home to the academic study of Theatre Studies in the School of English.

The Workshop Theatre is a laboratory space for undergraduate, postgraduate and staff research into performance possibilities, and hosts a variety of productions by student societies. Public performances are programmed throughout the year, including students' course work, pre-production work prior to the Edinburgh Festival in July, and occasional visiting professional companies.

[www.leeds.ac.uk/theatre](http://www.leeds.ac.uk/theatre)

Left: *A Chair is a Difficult Thing* by Sam Judd, BA Art & Design graduate, 2015

Bottom left: *Neither here, Nor there* by Caroline Gale, BA Fine Art and Art History graduate, 2015



## STUDENTS ON CAMPUS

Students play a key role in campus cultural life. Art and Design and Fine Art students place work in studios and in various spaces around the University campus for members of the public to enjoy as part of their degree shows. Students gain valuable experience volunteering at cultural venues, and they support the Public Art programme.

As part of continuing developments to our campus, in the summer of 2016 a new multi-purpose and experimental gallery space will open as the School of Fine Art, History of Art and Cultural Studies relocates to a new venue on University Road.



### SCHOOL OF MEDIA AND COMMUNICATION DEGREE SHOW Wednesday 8 June, 4pm–7pm

Exciting new work spanning film, photography, apps, radio broadcasts, communications research, websites and live TV broadcasts will adorn the Clothworkers' Building North, with a chance to meet the creators.

[www.media.leeds.ac.uk](http://www.media.leeds.ac.uk)

### SCHOOL OF DESIGN DEGREE SHOW Thursday 17 June–Saturday 19 June

Featuring work from finalists studying graphic and communication design, textiles, fashion design, art and design and fashion marketing, the School Of Design degree show will celebrate of all that our students have achieved and act as a springboard for their futures.

[www.design.leeds.ac.uk](http://www.design.leeds.ac.uk)

### SCHOOL OF FINE ART, HISTORY OF ART AND CULTURAL STUDIES DEGREE SHOW

Thursday 17 June–Friday 24 June

The Degree Show 2016 will showcase the work of BA and MA Fine Art students working with a variety of media including sculpture, painting, installation and film. In the run up to the degree show, students will be organising a number of public events.

[www.fine-art.leeds.ac.uk](http://www.fine-art.leeds.ac.uk)

## PARTNERSHIPS

Partnerships are crucial to the realisation of our cultural vision, and the University has forged unique collaborations from DARE with Opera North to our long-standing relationship with the M&S Company Archive sited on our Western Campus. Whether large or small in scale, local, national or international, cultural partnership working has led to innovative public programming, collaborative research, vibrant creative practice and new ways of curating exhibitions and displays.

### DARE

We combine the very best of both organisations to deliver the outstanding and challenging DARE programme, which leads cultural thought, learning and practice. Over 150 projects have been initiated since the creation of DARE in 2006, engaging practitioners, academics, students and audiences.

[www.dareyou.org.uk](http://www.dareyou.org.uk)



Top: George Monbiot. Above: Yasmin Alibhai-Brown. Right: *L'elisir d'amore 01*, by Opera North Chorus, 2016 (photo credit: Robert Workma)



### LIBERTY LECTURES

What do we mean by liberty, what are we prepared to sacrifice in order to achieve it and what do we expect from it once it is here? The annual DARE Liberty Lectures at the Howard Assembly Rooms in Leeds explore some of the most significant topics at the heart of contemporary society as leading intellectuals and practitioners share their perspectives and experiences on these questions.

### HOW DID WE GET INTO THIS MESS? BY GEORGE MONBIOT Wednesday 18 May, 7.45pm, Howard Assembly Rooms

George Monbiot is one of our most vocal and eloquent critics of the current consensus, brilliantly anatomising the state we are in, from the devastation of our environment to the crisis of inequality. In this lecture he both identifies and challenges the apocalyptic currents of contemporary times.

### EXOTIC ENGLAND BY YASMIN ALIBHAI-BROWN Friday 10 June, 7.45pm, Howard Assembly Rooms

As the English question who they are in relation to Europe and the world, Yasmin Alibhai-Brown considers this small island's boundless curiosity about the world, often tainted by aggression and exploitation, to offer an invigorating perspective on what 'Englishness' really means today.

To book tickets visit [www.operanorth.co.uk/whats-on](http://www.operanorth.co.uk/whats-on)



Top: Combat demonstration for *Make Leeds Medieval 2015*

Below: Food tasting at the *Make Leeds Medieval 2015*

Top right: Falconry display for *Making Leeds Medieval 2015*

## INTERNATIONAL MEDIEVAL CONGRESS

Monday 4 July–Thursday 7 July

**The International Medieval Congress (IMC) takes place annually in Leeds. Begun in 1994, the IMC now attracts more than 2000 medievalists from all over the world, making it the largest academic conference of its kind in Europe.**

In addition to the academic programme, which covers all aspects of medieval studies from archaeology to science and technology, we also organise a programme of events that are open to the public, including special lectures, concerts and other performances, excursions to sites of historic interest, hands-on workshops, as well as book and craft exhibitions. Special events for IMC 2016 include a medieval feast, a performance of the 15th-century morality play, *Mankind*, and our closing celebration, 'Making Leeds Medieval', featuring displays of combat and falconry as well as craft and food demonstrations.

[www.leeds.ac.uk/ims/imc/publicevents](http://www.leeds.ac.uk/ims/imc/publicevents)



**MEDIEVAL DAY AT THE MUSEUM (FREE)**

Sunday 3 July, 12pm–4pm, Leeds City Museum

Join us at the Broderick Room for a chance to immerse yourself in medieval-inspired crafts and activities for all ages. Try writing with quill and ink, play medieval games and hear about the intricacies of medieval heraldry, as well as a talk by Professor of Art History Catherine Karkov on the West Yorkshire Hoard, seven objects dating from 7th to 11th centuries found in the Leeds Metropolitan area in 2008–09.

**SECOND-HAND & ANTIQUARIAN BOOKFAIR (FREE)**

Sunday 3–Tuesday 5 July, Leeds University Union

Browse a range of stalls selling rare, second-hand and scholarly books on a range of subjects relating to medieval studies.

**'A FEAST FOR ALL SENSES': FOOD FROM HISTORY (FREE)**  
Monday 4–Thursday 7 July (University Square)

Experience different types of medieval food in a range of cooking and/or handling demonstrations and a different food-related display each day of the congress, giving visitors a chance to see, smell, touch, and taste the Middle Ages.

**MEDIEVAL CRAFT FAIR (FREE)**

Wednesday 6–Thursday 7 July, 10.30am–7.30pm,  
Leeds University Union

A variety of handmade items using and inspired by medieval craft techniques will be showcased, including handbound books, musical instruments, jewellery and pottery. Come and see the range of unique items on offer.

**MAKING LEEDS MEDIEVAL (FREE)**

Thursday 7 July, 10.30am–6pm, University Square

Live entertainment including music, combat displays, falcons, and hawks will celebrate the last day of this year's congress, joined by the King Edward's Living History Group with a mixture of hands-on activities, demonstrations, and displays. As well as the medieval craft fair, there will also be a fair of historical and archaeological societies.



## OTHER EVENTS COMING UP ON CAMPUS

### MUSEUMS AT NIGHT

**Friday 13 May, 6pm–8pm**

As part of the national Museums at Night Festival discover The Stanley & Audrey Burton Gallery and the Treasures of the Brotherton Gallery at this adult only after-hours event. Experience the collections in a new and creative light and let your hair down on a Friday night. Dance your way through the decades, explore the Galleries in a Hunt for History, craft your very own moment in time and so much more.

Left: Light Night presents an opportunity to explore the University of Leeds at night

Below left: Short films submitted by members of the public were shown for *Being Human Festival* 2015, as the Performing Violence project team from the University of Leeds and Opera North explored the performance of violence across different arts and media

### 5TH ANNUAL BRITISH ACADEMY/LHRI LECTURE

Each autumn, the Leeds Humanities Research Institute in association with the British Academy invites one of the speakers in the Academy's London-based public lecture series to give their lecture again before an audience at the University of Leeds.

### CULTURAL INSTITUTE'S AUTUMN LECTURE SERIES

There will be a series of exciting events when the new Cultural Institute launches in the autumn, the first of which will be:

#### MOON TWEEDS OF GUISELEY: FROM YORKSHIRE MILL TO GLOBAL BRAND

**Thursday 10 November, 6pm**

This lecture will be delivered by Professor Regina Lee Blaszczyk, Leader of the Enterprise of Culture/Rethinking Textiles project at the School of History.

### HERITAGE OPEN DAYS

**Thursday 8–Sunday 11 September**

Join us on campus to enjoy a tour of the Brotherton Library including a rare opportunity to see Special Collections stores, view archival material related to our Public Art. On Saturday 10 September, take an exclusive peek Behind the Scenes at the M&S Company Archive, and join one of our knowledgeable guides for the M&S Heritage Trail – a walking tour through the history of M&S in Leeds. Learn about the history of electricity in the home on Sunday 11 September through drama and historical

artefacts with student actors and the Museum of the History of Science, Technology and Medicine, supported by The Cultural Capital Exchange collaborative research project with Harewood House.

[heritageopendays.org.uk](http://heritageopendays.org.uk)

### LIGHT NIGHT

**Friday 7 October**

Light Night is an annual multi-arts and light festival which takes place over Leeds City Centre on one Friday night in October. The University of Leeds will join up with arts and cultural organisations across the city to present public events run by our students and staff.

[www.lightnightleeds.co.uk](http://www.lightnightleeds.co.uk)

### BEING HUMAN

**Thursday 17–Friday 25 November**

Being Human is a national forum for public engagement with humanities research. The festival highlights the ways in which the humanities can inspire and enrich our everyday lives, help us to understand ourselves, our relationships with others, and the challenges we face in a changing world. The theme for 2016 is 'Hope & Fear', with eight days of big questions, big debates and engaging activities for all ages.

[beinghumanfestival.org](http://beinghumanfestival.org)

## IN THE REGION

### OUT OF THE SHADOWS: REDISCOVERING JEWISH MUSIC AND THEATRE

**Wednesday 1 June–Thursday 23 June**

Out of the Shadows is a musical response to the violent upheavals that ruptured the lives of Jewish artists in the 20th century, and pieces once thought lost or languishing 'in the shadows', now brought back into the light. With an exhibition of children's drawings from the Terezin ghetto, several world premieres, 'Out of the Shadows' promises to be a poignant and uplifting journey of discovery.

For the full programme of events visit [ptja.leeds.ac.uk](http://ptja.leeds.ac.uk)

### YORKSHIRE YEAR OF THE TEXTILE AT LEEDS INDUSTRIAL MUSEUM, ARMLEY MILLS

**'COLOURFUL PAST: AN EXHIBITION EXPLORING THE HISTORY OF DYEING IN LEEDS'**

**Until Sunday 31 July**

Curated by the Heritage Dyers Group in conjunction with Special Collections at the University of Leeds. The exhibition is inspired by the Dyehouse Book, a series of 200-year-old dye recipes by William Gott, son of the owner of Armley Mills. The book has also inspired artist Elizabeth Gaston to create a contemporary response, *Crafted Futures*, which will be on display at The Stanley & Audrey Burton Gallery from 8 June to 9 July.

[www.leeds.gov.uk/armleymills](http://www.leeds.gov.uk/armleymills)

### LEGACIES OF WAR

The Legacies of War centenary project organises events commemorating and exploring the different histories of the First World War, examining historical, cultural and social legacies. The exciting and varied public programme responds to widespread public interest in this crucial period of history.

### FIRST WORLD WAR STUDY DAY, SHEFFIELD

**Saturday 4 June, 9.15am–5pm**

Organised on the centenary of Lord Kitchener's death and in the run-up to the 100th anniversary of the Battle of the Somme.

### TALK ON WAR MEMORY

**Thursday 4 August, Leeds City Museum**

A talk on Memory and the First World War, free and open to the public.

For full details of events in the region visit [arts.leeds.ac.uk/legaciesofwar/events](http://arts.leeds.ac.uk/legaciesofwar/events)



1914-18  
2014-18

LEGACIES  
OF WAR

Right:  
Roger Fry,  
*Portrait  
of Nina  
Hamnett*,  
1918, in  
The Stanley  
& Audrey  
Burton  
Gallery  
Image ©  
University of  
Leeds

Far right:  
Inside the  
Treasures  
of the  
Brotherton  
Gallery



## VISITOR INFORMATION

### LEEDS UNIVERSITY UNION

Open every day, 8.30am until late  
Monday–Saturday, open from midday  
on Sundays

[www.luu.org.uk](http://www.luu.org.uk)

### CLOTHWORKERS' CENTENARY CONCERT HALL

A series of free lunchtime performances every Friday during term time, plus a full schedule of events programmed throughout the year.

[concerts.leeds.ac.uk](http://concerts.leeds.ac.uk)

### STAGE@LEEDS

stage@leeds has a busy events schedule with performances throughout the year, and tickets available through its box office with discounted rates available to students and concessions.

[stage.leeds.ac.uk](http://stage.leeds.ac.uk)

### M&S COMPANY ARCHIVE

**Opening hours**

Monday–Friday, 10am–5pm

FREE and open to the public

[marksintime.marksandspencer.com](http://marksintime.marksandspencer.com)

### THE STANLEY & AUDREY BURTON GALLERY

**Opening hours**

Monday, 1pm–5pm

Tuesday–Saturday, 10am–5pm

FREE and open to the public

[library.leeds.ac.uk/art-gallery](http://library.leeds.ac.uk/art-gallery)

### TREASURES OF THE BROTHERTON

**Opening hours\***

Monday, 1pm–5pm

Tuesday–Saturday, 10am–5pm

FREE and open to the public

[library.leeds.ac.uk/treasures](http://library.leeds.ac.uk/treasures)

### ULITA – AN ARCHIVE OF INTERNATIONAL TEXTILES

**Opening hours\***

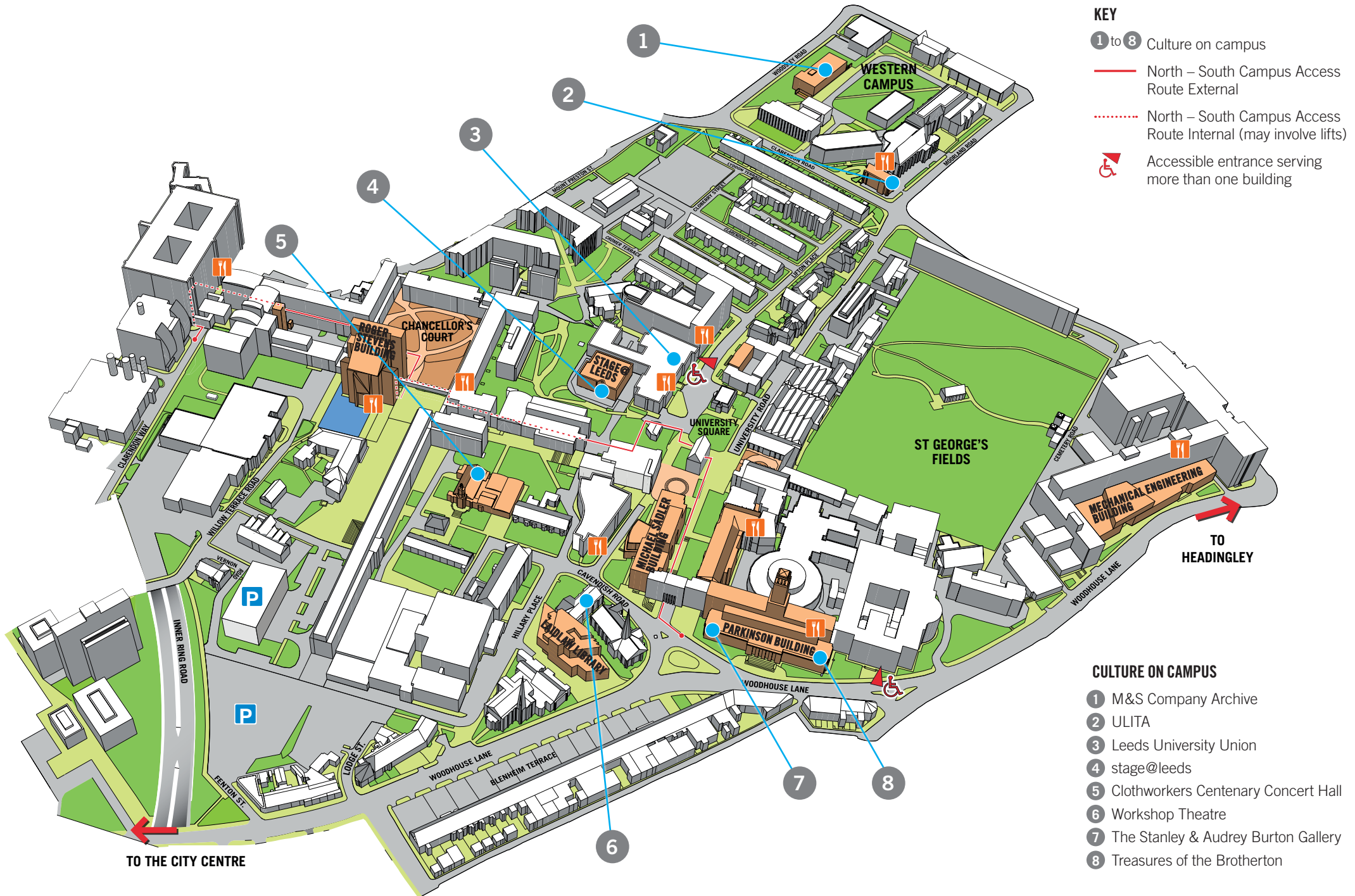
Tuesday–Thursday, 9.30am–4.30pm

Friday by appointment

FREE and open to the public

[ulita.leeds.ac.uk](http://ulita.leeds.ac.uk)

*\*Please note our galleries and archives are also used for educational and research purposes. Therefore, to avoid disappointment please contact them directly to confirm opening times.*



- KEY**
- ① to ⑧ Culture on campus
  - North – South Campus Access Route External
  - ⋯ North – South Campus Access Route Internal (may involve lifts)
  - ♿ Accessible entrance serving more than one building

- CULTURE ON CAMPUS**
- ① M&S Company Archive
  - ② ULITA
  - ③ Leeds University Union
  - ④ stage@leeds
  - ⑤ Clothworkers Centenary Concert Hall
  - ⑥ Workshop Theatre
  - ⑦ The Stanley & Audrey Burton Gallery
  - ⑧ Treasures of the Brotherton



### **FOOD AND DRINK**

There are a variety of cafés around campus serving food and drink on weekdays, and the Refectory next to the Leeds University Union offers a wide range of hot and cold food every day. Alternatively, there are a number of independent cafés opposite the Parkinson Building steps for you to explore.

### **PARKING**

Parking at the University of Leeds is limited during term time, although there are several public car parking facilities within walking distance of the campus, including a multi-storey car park on Woodhouse Lane. If visiting after 5pm or on weekends, you are able to use the new multi-storey car park in the heart of the campus.