



---

## Going public

The benefits and challenges of taking research to a wider audience.

Page 9

---

## Showcase 2015 – Postgraduate Research Conference

A report from this year's annual celebration of excellence in postgraduate research.

Pages 12-13

---

## Treasures set to be revealed

Preparations underway for the opening of the new Treasures of the Brotherton Gallery early in 2016.

Page 14

---

# Investing in Knowledge, Creating Opportunity

A public event launched a new independent report offering the first comprehensive review of the University's economic, social and cultural impact.

Pages 3- 5

## Leader column

# The promise of more to come

**As the first semester draws to a close, we can finish the year celebrating some excellent achievements and confident that 2016 holds the promise of further progress.**

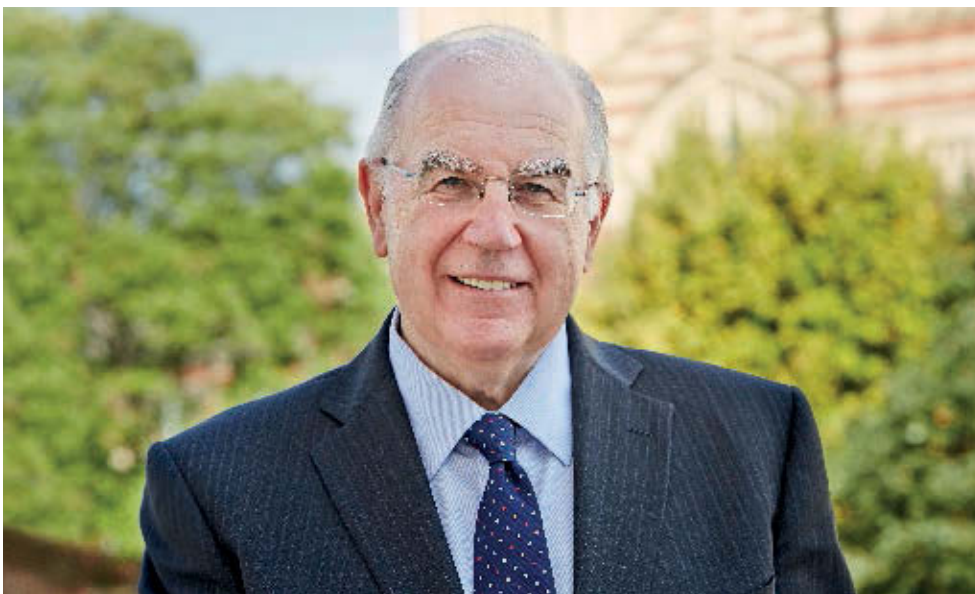
As you will read elsewhere in these pages, our Investing in Knowledge, Creating Opportunity event was a great occasion. Our aim was to highlight the University's economic, social and cultural contributions and bring the breadth of our knowledge and expertise to a wider audience – business, community, academic and the general public. We did this well, attracting visitors to the event itself and enthusing the local media who were keen to spread the news far and wide. We featured on the front page of the *Yorkshire Evening Post*, and even attracted a news crew from BBC's *Look North*. They reported live from the Parkinson Court exhibition, giving us the opportunity to take the University's message into the homes of people across the Yorkshire region.

Staging this ambitious public event represented a step change for the University, and I hope it will herald a new, more open, collaborative and dynamic way of working in partnership with local institutions, businesses and communities. My thanks to everyone from across the University who played a part in making the day such a success.

I am delighted to report that our Making a World of Difference fundraising campaign has reached its £60m goal. This achievement – which was reported at a very successful alumni event, One Day in Leeds\* – reflects the generous financial support of some 14,000 donors and the commitment of numerous colleagues across campus. The funding has contributed to important projects at Leeds including: educational outreach programmes; widening participation scholarships; new facilities and equipment on campus; student opportunities; investment in our research such as PhD scholarships, research fellowships and a professorship.

In 2006 we welcomed 19 alumni-funded scholars to the University; in 2015 alumni and other friends are supporting 350 scholars. Our alumni also support students in many other ways, providing career advice and internships and contributing to our extracurricular activities.

The campaign formally comes to a close at the end of this year and we will announce our future intentions early in 2016. The success of the campaign has been a genuine team effort by Alumni and Development, expertly led by Michelle Calvert, our Director of Development.



This also seems an appropriate moment to recognise the achievements of the University's Enterprise Learning team. Headed by Professor Nigel Lockett, the team has swept the awards board this year. Accolades include being named 'Entrepreneurial University of the Year' at the Times Higher Education Awards and receiving the Duke of York Award for University Entrepreneurship at the 2015 Lloyds Bank National Business Awards for our work in encouraging and enabling student start-ups and alumni entrepreneurs. These were preceded by a prestigious National Teaching Fellowship for Professor Lockett and an award for Kairen Skelley of our student start-up service Spark, who was named Higher Education Enterprise Champion. Sarah Underwood also takes great credit for her innovative and determined work in this area, and Andy Duley and Jayne Glennon have made great contributions. A remarkable year for a remarkable team!

Looking forward to next year, we can expect the launch of the new Cultural Institute, one of the key initiatives in our Strategic Plan. In summary, the Cultural Institute will boost our engagement with the publicly funded cultural sector and commercial creative industries, and broker relationships between Leeds academics and an extended network of partner organisations. DARE – the recently renewed creative collaboration with Opera North – our partnership work with Marks & Spencer, and the Memorandum of Understanding signed with West Yorkshire Playhouse have already demonstrated the mutual benefits of these relationships and the public value they can generate. The Institute will also enrich our students' education by connecting them with some of the finest minds in the creative and cultural sector. Their learning experience, skills and employability will be enhanced by a greatly expanded network of volunteering, placements and internships. It's also envisaged that our partners will offer more opportunities for research-based learning and project work.

In addition, the Institute will provide a single focal point through which we can bring together

our cultural treasures, facilities and activities, promoting them to our students, staff, friends and wider external audiences in a much more coherent and exciting way.

Other significant events we can anticipate in 2016 include the formal launch of the Priestley International Centre for Climate, our world-leading centre for climate research, the inaugural Astbury Conversation and conference, the start of building works on our University Innovation and Enterprise Centre, the establishment of the Leeds Institute for Teaching Excellence and Innovation led by Director Dr Rafe Hallett (History) and the opening of the new Treasures of the Brotherton Gallery.

Of course, the year ahead will have its challenges. We must respond to the Government Green Paper on higher education. This set out plans intended to drive up teaching standards, widen access to university, increase choice for students and enhance competition between universities, simplify the structures that underpin higher education and cut bureaucracy. It will need to be assessed alongside the contents of Sir Paul Nurse's review of the role of research councils and the funding landscape, and the implications of the recent Comprehensive Spending Review. The consultation period on the Green Paper runs until 15 January and it is likely that we will channel our response through the national representative bodies, with Leeds-specific additions if necessary.

Before that, however, there is Graduation and the Christmas break – a time for celebration, relaxation and reflection. I would like to thank you all for your hard work and inspiration during 2015 and wish you and your friends and families a peaceful holiday.

Vice-Chancellor Sir Alan Langlands

\*See page 6 for a full report.



## News

# Our £1.3bn contribution to the economy

**A host of local business people, civic and community leaders, stakeholders and colleagues attended a public-facing event in the Great Hall to hear how the University contributes a remarkable £1.3bn to the economy.**

A specially commissioned, independent report, *Investing in Knowledge, Creating Opportunity*, offers the first comprehensive review of the University's impact and provides the foundation for the University's ambitions for the future. The findings, showing the University's contribution to the economy, culture and society, were published and presented by the Vice-Chancellor Sir Alan Langlands at an open event.

Attendees included delegates from Yorkshire Cancer Research, the Economic and Social Research Council, Leeds Trinity and Leeds Beckett Universities, the NHS, Opera North, Arup, the Met Office, KPMG, IP Group, the Chamber of Commerce, and Smith & Nephew.

Speaking at the event, Sir Alan said: "Today is about helping to demystify what happens here and setting out the tangible impact that we can have on the Leeds City Region and beyond.

"We are increasing our visibility, so that we can combine our knowledge and expertise and create new opportunities for growth. We want to engage with the Leeds City Region Enterprise Partnership and many others to build

new alliances and to support the ambitions of the Northern Powerhouse. I hope we can find ways to work together to make Leeds and the surrounding area a better, more prosperous place to live."

He went on to talk about our international reach and reputation, the strength of our research areas – especially those tackling real world priorities of health, water, food, energy, culture, cities and engineering – and our drive to recruit and retain the brightest and best people. He also outlined the University's planned investments in facilities such as the University Innovation and Enterprise Centre, which will enable our researchers to work with businesses to create new, high-growth businesses.

The event also featured a panel debate hosted by BBC journalist Steph McGovern and an exhibition in Parkinson Court focusing on some of our key research areas and ways the University contributes to the economic and cultural life of the city.

**See overleaf for more event news.**

## Contents

### News

Page 3

### Partnership

Page 8

### People

Page 9

### Research and innovation

Page 10

### Students

Page 12

### Campus

Page 12

### In the news

Page 16

### Honours

Page 17

### News/small ads

Page 18

### Events

Page 19

### FAQs

Page 20

## About the Reporter

The *Reporter* is the University of Leeds' staff magazine, produced eight times a year. More than 7,600 copies are distributed to our staff and stakeholders. The *Reporter* is produced by the Communications team.

Previous copies of the *Reporter* can be found online at [www.leeds.ac.uk/forstaff/reporter](http://www.leeds.ac.uk/forstaff/reporter)

### Read online

If you would prefer to receive an electronic copy of the magazine, please email [the.reporter@leeds.ac.uk](mailto:the.reporter@leeds.ac.uk) quoting your personnel number or, if you are external to the University, your name, postcode and work email address.

### Keep in touch

If you have an idea for a story, want to write a letter, comment on this edition or would like to voice your opinion about University matters, please contact us at [the.reporter@leeds.ac.uk](mailto:the.reporter@leeds.ac.uk) or 0113 343 6699.

Your comments are always welcome.

The front cover shows the *Investing in Knowledge, Creating Opportunity* exhibition in Parkinson Court.



Stay up to date  
with University  
news and events:



universityofleeds



@UniLeedsStaff



universityofleeds



University of Leeds



[leeds.ac.uk/forstaff](http://leeds.ac.uk/forstaff)

## News

# Investing in Knowledge, Creating Opportunity

Here are some key findings from the report on our economic impact, produced by Viewforth Consulting. The report also notes the wider impact the University has on society through student volunteering programmes and work with charities, and the scope and quality of our academic research. The full document is available at [www.leeds.ac.uk/impactreport](http://www.leeds.ac.uk/impactreport)

### Our economic impact

- Every £1m of revenue generated by the University will produce a further economic impact of £1.31m in the UK, £0.97m of which will be in Yorkshire and Humber
- We are Leeds' third largest employer, creating the equivalent of nearly 6,600 full-time jobs. Taking into account supply chain and expenditure, the University supports more than 14,000 jobs, the majority of them in Yorkshire and Humber
- For every 100 direct full-time equivalent jobs created by the University, an additional 117 jobs are generated in other industries, 92 of which are in Yorkshire and Humber
- The University has created more than 100 spin-out companies, with a market capitalisation in excess of £500m. Seven of these spin-out companies are listed on AIM, which is more than any other university in the UK

### Our research impact

- The quality, volume and impact of world-leading research carried out at Leeds positions us in the top 10 for research power in the UK
- Most recently, it helped us secure a place in the top 100 universities in the world in the QS World Rankings 2015

### Our social impact

- Our volunteering programme is one of the biggest in the country
- Each year, students undertake voluntary outreach and aspiration-raising activity in the region's schools, equivalent to delivering 443 weeks of classroom support
- Students inject close to £200m of international revenue into the City Region each year
- The University collaborates with over 150 local charities to help them recruit volunteers.

## Panel looks to future challenges

Award-winning business broadcast journalist Steph McGovern hosted a lively panel discussion during the event, exploring how universities as a sector are contributing to the success of their regions, the wider economy and society, and the challenges of the future.

The panel, which represented a range of views from across industry and education, comprised: Professor John Fisher, Deputy Vice-Chancellor; Professor Graham Isaac, DePuy Synthes Joint Reconstruction, Research and Development; Bill McElroy, Managing Director, Consulting, Turner and Townsend; Lesley Thompson, Director, Academic & Government Strategic Alliance, Elsevier; Roger Marsh, University Council member and Chair of the Leeds Local Enterprise Partnership (LEP); and Lucy Thornycroft, Regional Director, Confederation of British Industry.

Topics discussed included the much talked about Northern Powerhouse, with panel members agreeing that, while there was a desire for businesses to respond positively to the idea, more work was needed to clarify and

quantify its aims and objectives.

The strength and value of relationships between businesses and universities also came up. Roger Marsh commented that positive collaboration between the two is critical and central to the LEP agenda, while Bill McElroy stressed that businesses need universities to help them foresee and meet future demands for specific knowledge, expertise and skills.

The panel also considered how to encourage young people's interest in the areas of science, technology, engineering and mathematics (STEM). The CBI's Lucy Thornycroft said that the skills shortage is the biggest concern facing businesses, and other panel members agreed that more needed to be done to inspire young people to take an early interest



Steph McGovern talks to an event attendee

in STEM subjects. She also put the case for increased levels of investment in research and development to enable the UK to compete internationally, as well as building the infrastructure necessary to attract and retain talented young people. This was echoed by Bill McElroy, who cited a Cambridge biotech research and development facility that provides affordable housing for graduates.

Panel members were in agreement that universities and businesses must increase collaboration and find creative new ways of working to ensure innovation and economic growth for the region and the UK.



Panel members (l-r): Lucy Thornycroft, Professor Graham Isaac, Lesley Thompson, Roger Marsh, Bill McElroy and Professor John Fisher





The Vice-Chancellor tried out a driving simulator



Frank, the cycling skeleton, helps to demonstrate new hip and knee replacements



Lucie the robot engaged with visitors to the exhibition

## Excellence on display

Some of the University's most exciting research was on display in the Parkinson Building following the impact event. Visitors were able to walk between the different zones, chatting to researchers and interacting with research equipment and programmes.

The Health Zone, for example, included research projects featuring non-invasive technology to monitor blood glucose levels, medical imaging, exercise science and cardiovascular monitoring, while the Technology Zone allowed visitors to interact with Lucie the robot and see how our sensing equipment can test different foods. Other research zones featured Culture, Society and Sustainability, showcasing our work on cities, climate, transport, high value engineering, water, food and energy. Colleagues and Student Ambassadors from the University's Facilities, Enterprise and Educational Engagement teams were also happy to talk about their current initiatives and future plans.

## Championing our new exercise suite

**Alistair Brownlee MBE, Olympic and World Champion triathlete and Leeds alumnus (BSc Sports Science and Physiology, 2009), officially opened a new exercise science research facility at the event.**

The opening of the Integrative Exercise Suite marks the final stage of a £1m investment by the University in its world-leading sport and exercise science (SES) research. Together with the new Integrative Exercise Medicine and Integrative Exercise Physiology labs, it will allow our researchers to explore the link between basic science and translational benefit.

Equipped with the latest technology, the new facilities will enable researchers to study how the body functions during acute activity and how it responds to training. The effect of different intensity and patterns of exercise will be monitored, and the findings used to benefit not just sportspeople but also, for example, cardiac patients and the elderly. Researchers will focus



Professor Stuart Egginton, Alistair Brownlee and the Vice-Chancellor

on developing more effective clinical treatments for disease prevention and rehabilitation programmes.

Opening the suite, Alistair Brownlee said: "I enjoyed my time at Leeds, and my SES degree helps me evaluate new ideas that may improve performance. Science is important to help athletes perform to their best."

Professor Stuart Egginton (Biomedical Sciences), commented: "We all know exercise is good for you – of all interventions it has the most benefit, for the most people, under most conditions. The challenge is to determine what form is optimal for different individuals, whether it is to improve Alistair's performance or help our clinical colleagues develop better therapies."



## News

# Making a World of Difference Campaign celebrates success

Almost 200 senior alumni, staff and scholars gathered for the One Day in Leeds event in November, celebrating the success of the University's Making a World of Difference Campaign.

The Campaign, which began in 2010, was the University's first major fundraising drive for almost 90 years – and has now achieved its target of raising £60m to support projects across campus. Gifts to the Campaign contribute to many important projects, including:

- Educational outreach programmes such as Reach for Excellence, the Thomas Transition Programme and IntoUniversity
- 1,400 undergraduate widening participation scholarships and 300 Masters scholarships
- New facilities and equipment – from the Laidlaw Library to super-resolution light microscopes
- Student opportunities, such as undergraduate research and leadership scholarships and the LeedsforLife Foundation



Guests at the One Day in Leeds event had the opportunity to talk to scholars supported by donor donations

- Investment in research, including 38 PhD scholarships, the Cheney Fellowships, and 10 academic posts, ranging from research fellowships to a professorship.

The One Day in Leeds event, opened by the Vice-Chancellor, thanked donors for their generosity and gave them a flavour of everything their donations had made possible. Some of the many hundreds of scholars whose studies have been supported by donations were also on hand to tell their stories and show what difference these made to their time at Leeds.

Presentations from academic leaders demonstrated the University's future plans in areas such as arts and culture, health and engineering, and allowed donors to see how

success in these areas can be accelerated through further support.

The day ended with dinner in the Great Hall, hosted by Chancellor Lord Bragg, where three new donors were welcomed to the Court of Benefactors. These donors have made an exceptional contribution to the University: Liz and Terry Bramall, whose charitable trust funds the University's Reach for Excellence programme: the Candlelighters Trust supports research into childhood cancer; and the Burton family's support stretches back to 1929, including, most recently, their contribution to The Stanley & Audrey Burton Art Gallery.

The details of the next phase of the Campaign will be announced in the New Year.

## News in brief

# Get cracking for Easter bookings

MEETinLEEDS, the conference and events department of the University, is always planning ahead and is urging colleagues to do the same.

"Easter is a really busy period for conferences, so we want our colleagues at the University to have the first crack at bookings," says Harriet Boatwright of MEETinLEEDS.

Beat the rush and get in touch with the team at [enquiries@meetinleeds.co.uk](mailto:enquiries@meetinleeds.co.uk) or 0113 343 6100, especially for bookings over the Easter break when there are a number of prime locations available for conferences, events and meetings.



*"Having never organised a large international conference before, it could easily have become very overwhelming. Sharing the responsibility for the conference with MEETinLEEDS was crucial for its success. It allowed me, as an academic, to concentrate my efforts on putting together a well-balanced programme and obtaining an impressive list of invited speakers. From helping us put the bid together to weekly update meetings in the run-up to the conference to the smooth running and mopping up afterwards, I felt completely confident in MEETinLEEDS."*

**Dr Almut Beige**, Theoretical Physics Group

# Penn State visit to the University

A visit by Pennsylvania State University (PSU) Executive Vice-President and Provost Nick Jones and Michael Adewumi, Vice-Provost for Global Programs, underlined PSU's commitment to bilateral research and innovation and student education partnerships with the University.

Leeds and PSU have a Study Abroad agreement, which has seen around 350 student exchanges to date.

Professors Jones and Adewumi met with Sir Alan Langlands and Professor David Hogg, and with staff from the Centre for Climate Change Economics and Policy and the new Priestley International Centre for Climate. They also toured the Leeds Institute for Data Analytics with Professor Sir Alex Markham, Director of the MRC Medical Bioinformatics Centre.

## News

# Annual Report 2014/15

## A secure base to support our planned investment

The University has embarked on a period of significant investment to support delivery of the ambitious academic targets in its Strategic Plan, and our financial performance for the year 2014/15 is underpinned by progress in both of our core academic activities, research and education. Our healthy financial position provides a secure base to support our planned investments and a buffer to help us cope with any funding pressure.

The year saw double-digit growth in international fee income. The impact of the third year of recruitment under the new home/EU undergraduate fee regime, coupled with underlying growth in research income of 6%, delivered a total underlying income growth of 6%.

A surplus of £57m (9% of total income) is an increase of £18m (2%) compared to 2013/14, with £15m of the increase resulting from a one-off benefit from an exceptional tax credit for research and development expenditure. The underlying operating surplus of £42m is a £3m improvement on last year. This is primarily as a result of growth in student fee income following another strong recruitment cycle, offset by planned investment in staff and a higher level of depreciation associated with the increased level of capital investment and value of the estate.

At £268m (13% higher than 2013/14), tuition fee income now accounts for 42% of total income. Home/EU undergraduate intake grew by 2% from the previous year and postgraduate recruitment grew by 7%, with total student numbers across all years in line

with last year. Fee income from our home/EU students increased by £25m (19%), reflecting the recruitment of the third cohort of students under the new £9k fee regime.

We also saw a 10% growth in international fee income, with international student numbers across all cohorts and years increasing by 9%. The intake for undergraduate programmes merits particular mention: it grew by nearly 20% compared to last year, with the largest growth in the faculties of Arts, Engineering and Business.

Our Strategic Plan identifies the need to improve research performance and consistency, with a focus on investment in people and infrastructure and on tackling global challenges. Reported research income of £132.6m is broadly in line with last year; however, the underlying trend is growth of £7m (6%), having adjusted for changes in the hosted National Institute for Health Research contract.



Jane Madeley, Finance Director

An increase in staff costs of £10m (3%) can be attributed to the pay award, increments and the start of our major programme of academic investment to be a globally leading institution for research and education. The increase in other operating expenditure of £9m (4%) is attributable to new investments in scholarships and student recruitment costs, infrastructure and maintenance to improve our teaching and research facilities, and residences-related costs to support increased residential capacity.

The healthy financial result in 2014/15 further strengthens our balance sheet, which continues to provide a secure financial platform, enabling us to make the necessary academic and capital investments to support the delivery of our ambitious Strategic Plan.

**Jane Madeley**  
Finance Director





## Partnership

# Bright outlook for Met Office partnership

**Future collaboration between the University and the Met Office on weather and climate science has been set out in a Memorandum of Understanding (MoU) signed by Vice-Chancellor Sir Alan Langlands and Professor Dame Julia Slingo, Met Office Chief Scientist.**

Speaking during the signing, Sir Alan said: "Weather and climate predictions deliver billions of pounds of socio-economic benefit to the UK. The Met Office and the University have an active and growing partnership at all levels, from senior academic staff through our early-career fellows to the education of the next generation of weather and climate scientists. We look forward to continuing to grow the reach of the partnership across the University."



Dame Julia and Sir Alan sign the MoU

Dame Julia commented: "This agreement will enable world-leading research from Leeds to join with ours at the Met Office to deliver real impact through operational improvements in Met Office forecasts and services that provide such significant benefits to the UK and beyond. The Met Office cannot thrive without our science partnerships; they help us maintain our world-leading position so that we can provide all our customers with services based on the best science and information available."

## Food collaboration a recipe for success

**A new collaboration between the University and China's Jiangsu University (JSU) aims to establish a joint research centre for food reassurance, to accelerate the development and application of food safety and sensing technologies and solutions.**

The universities signed a MoU during a recent visit from JSU's President Yuan Shouqi to the School of Food Science and Nutrition.

Professor Malcolm Povey, leading the collaboration at the University, says: "The joint laboratory on remote and non-invasive, non-destructive sensing for food quality and safety will enable us to maximise the resources and facilities in both universities.

"This is a key strategic activity for the University – we have many internationally recognised experts in areas related to food sensing, including ultrasound, passive acoustics, microwave, terahertz, medical diagnostics, robotics, and optical techniques. In addition to academic leverage, the collaboration with JSU offers greater investment and capacity in industrial or commercial strength engineering."

The visit coincided with a Food Sensing Technology event which brought together food manufacturers, retailers, technology providers and government bodies, including the Food Standards Agency, to discuss how improved food sensing technologies can better address food safety and quality. Technologies on display included those that could detect hard plastic in ready meals without compromising pack integrity, identify the presence of brown rot in turnips, and accurately measure the crunchiness of food.

More information is at [goo.gl/9Fspz0](http://goo.gl/9Fspz0)



## Welcome to West Yorkshire Playhouse

Ready to play their parts (l-r): Dr Alice O'Grady, Robin Hawkes (WYP), Sir Alan Langlands, James Brining (WYP) and Garry Lyons, programme leader for our Writing for Performance and Publication MA



## Staging a double act with West Yorkshire Playhouse

**A new theatre partnership between the University and West Yorkshire Playhouse (WYP) is putting learning centre stage.**

The School of Performance and Cultural Industries (PCI) will work closely with the Playhouse on a series of joint theatre projects focused on developing new and emerging talent.

One of the first initiatives sees the partners link the Playhouse's new writing schemes with the University's Masters course, Writing for Performance and Publication, aimed at encouraging new playwrights and playwriting.

The University and the Playhouse have signed a MoU to develop further projects with regional, national and international impact over the next three years.

Dr Alice O'Grady, Head of the School of PCI, says: "This is a significant step forward in building a more solid relationship with West Yorkshire Playhouse. The link will not only benefit current staff and students but will extend into the future as Leeds establishes itself as a city committed to the development of new writing for the theatre."



## People

# Going public

## The benefits and challenges of taking research to a wider audience

**University researchers seized the opportunity to explain their work to a wide and varied public audience at this year's British Science Festival (BSF) in Bradford. Jennie Hall from the Public Engagement team tasked some University participants about the benefits – and challenges – of taking part in such an event.**

"I enjoy enthusing public audiences by demonstrating the global importance of peatlands and our research. The people attending the sessions were very interested, wanted to learn more and were grateful to meet the experts," says Professor Joseph Holden, Director of [water@leeds](mailto:water@leeds).

Professor Holden was invited to give the Geography Presidential Lecture at the Festival after being recommended by the Royal Geographical Society. He continues: "My advice to people presenting a session mainly centred on a talk, is to leave plenty of time for the audience to come and chat with you afterwards – that's in addition to public questions. I found that having some interactive exhibits for people to get involved with really helped too."



Dr McLean creating an algorave

Dr Kirsty Pringle (Research Fellow, Institute for Climate and Atmospheric Research) presented the results of a citizen science project on air pollution, which used a computer model to simulate the distribution of tiny particles of sand or smoke. She felt it was a good event to present at as it was local to her study area, saying: "The research is very topical – particulate matter air pollution can affect climate and human health – but I find it quite difficult to convey our research to outreach audiences. So, I used NERC\* funding to run a pilot citizen science campaign – 'The Air in Saltaire\*\*' – which enabled us to lend cheap air quality monitors to people in the town of Saltaire. The idea was that if we could link our research to local measurements, it would make the topic a bit more tangible and we'd collect some useful data at the same time."

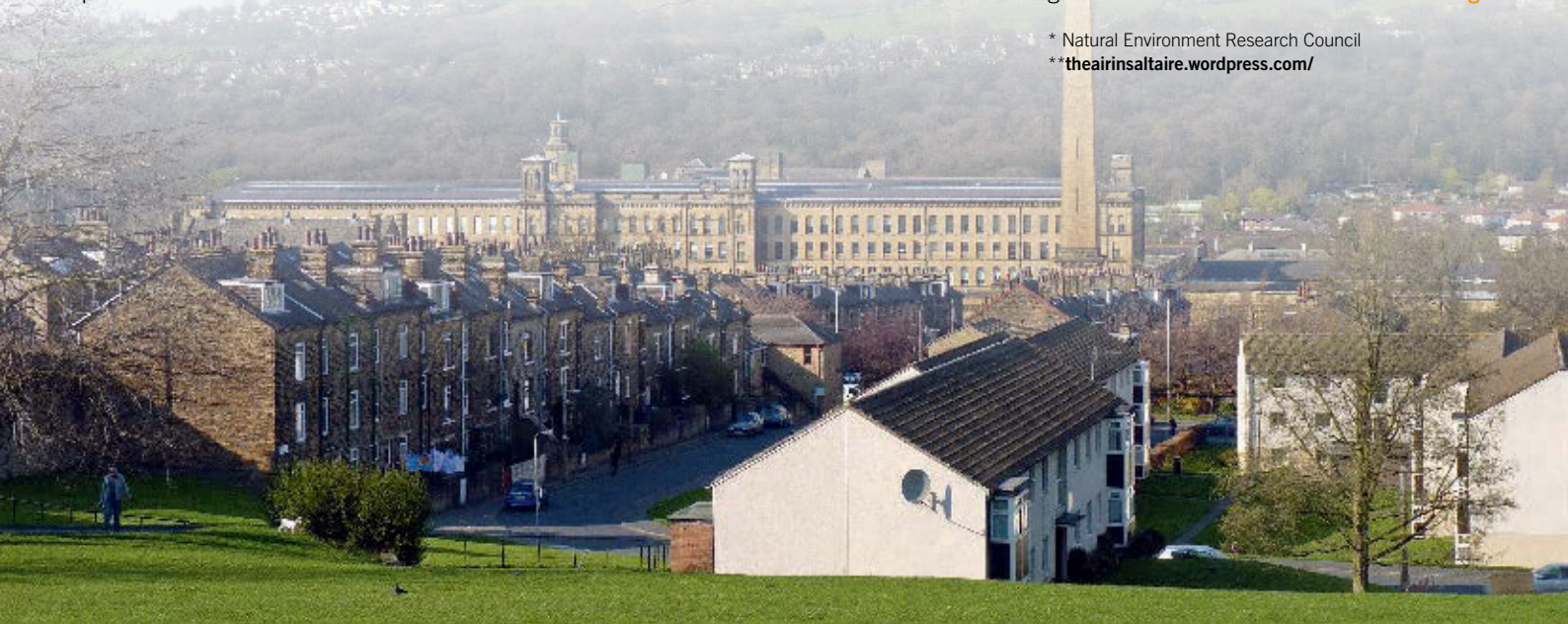
Dr Alex McLean (Music) says: "As a researcher working across music and computer science, it's great to see an institution such as the British Science Association making efforts to connect science with the creative arts. The Festival was fun and exciting, full of different perspectives and open minds. It was also well organised and pretty well attended. I'd certainly recommend the experience."

Dr McLean gave the Daphne Oram Award Lecture for digital innovation, talking about his work 'live coding', or designing programming languages for creating live music. He staged an algorave in a local bar, generating music from algorithms, which went particularly well.

Dr James Stark (University Academic Fellow in Medical Humanities) took part in the event, hoping to engage wider audiences in his research and increase the profile of the history of science and its relevance for current research, policy and practice. As Chair of the Outreach and Engagement Committee of the British Society for the History of Science, he also wanted to lead by example. He says: "I would definitely recommend it. The BSF team do a fantastic job with publicity – the events which I put on were very well attended, and I had requests for press follow-up as well. The organisers request information quite far in advance and I didn't have all the details of participants when putting in my proposals, for example. In future, I will definitely try and get organised earlier!"

The 2016 British Science Festival (6-9 September) will be hosted by Swansea University. Find more information and apply for grants at [www.britishsociety.org](http://www.britishsociety.org)

\* Natural Environment Research Council  
\*\*[theairsaltaire.wordpress.com/](http://theairsaltaire.wordpress.com/)





## Research and innovation

# Realigning our research and innovation

**The realignment of Research and Innovation (R&I) is now complete, enabling it to better address three important objectives of the Strategic Plan: to increase research and innovation income by 50% by 2020; to increase the recruitment of high-calibre postgraduate researchers; and to grow our research power and quality.**

R&I is led by Professor David Hogg, Pro-Vice-Chancellor for Research and Innovation, supported by professors Andy Gouldson, Associate Pro-Vice-Chancellor for Interdisciplinary Research, and Claire Honess, Dean of Postgraduate Research Studies. The realignment has created five integrated teams that will work across all faculties and the centre.



An artist's impression of the new University Innovation and Enterprise Centre

*“The University is really investing in the growth of research and innovation development. This is an exciting time with talented new members of staff joining the Research and Innovation Development team who will enhance and support existing capability. The single unified team will help meet the university’s new targets for increased research and innovation income while supporting academic development to enable the delivery of the very highest-quality research.”*

**Professor David Hogg**

## Research and Innovation Development

Led by Ceri Williams, the team aims to support academic development in order to achieve a 50% increase in R&I funding by 2020. It will do this by identifying external funding opportunities that align with key research strengths, promote collaborations to enhance interdisciplinary research, and target funding sources to increase the recruitment of high-calibre postgraduate researchers. The team will support the University’s key research themes – cities, culture, energy, food, health, high-value engineering, and water – and platforms – Leeds Social Sciences Institute, the Priestley International Centre for Climate, Leeds Institute for Data Analytics, and the Astbury Centre for Structural Molecular Biology.

Other priorities include the development of a clear R&I strategy in partnership with each faculty, processes to embed an integrated team, and support for professional development and team working.

The team is also producing a business case for the University Innovation and Enterprise Centre (UIEC). UIEC will provide a superb environment to support innovation and collaboration, and attract external partners to engage with our knowledge, assets and capabilities, and to access our researchers. UIEC is due to open in summer 2018.

## Research Quality and Policy

Headed by Michelle Double, the team is responsible for responding to external research policy, implementing it locally and supporting academic staff to achieve compliance. It deals with all administrative aspects of the preparation of our REF submissions, including the establishment of processes to support academic leadership in the assessment, validation and reporting of progress towards institutional targets of growing research quality and power.

## Contracts and Commercialisation

This team, led by Andy Duley, is helping us to realise our ambitions for research growth, building positive external relations and generating income and impact. The team provides support for R&I contractual matters, including the review of all non-standard contracts, and manages a pipeline of commercialisation opportunities, giving professional support throughout all stages of intellectual property development and exploitation. It helps academics to contract with external organisations and to identify intellectual property and research suitable for commercial development.

## Strategy and Planning

Tina Egan and Jennifer Stergiou jointly lead this team, which promotes an integrated approach to R&I and student education planning and reporting processes. This closer working is informing the development of a holistic change agenda to enhance the University’s approach to strategic planning, management information and reporting.

## Finance

The team, headed by Alan Thomson and Jennifer Stergiou, provides an end-to-end research finance service. Research finance, which includes pre-award costing and post-award management of grants, continues to be delivered locally but is now line-managed in the finance structure. The central Operations team will work closely with colleagues across the University, and particularly the Faculty Research and Innovation offices, to deliver consistent policy, process and underlying systems for grants management, while recognising local needs. Priorities for the team in the coming year will include the development of a strategy to underpin the management of an increasing volume of research grants and a review of processes, systems and reporting to support grants management.



## Research and innovation

# Open access milestone

**More than 10,000 research outputs have now been uploaded by University colleagues to the White Rose Research Online repository.**

The milestone was reached when Professor Andrew Hill (Head of the Academic Unit of Psychiatry and Behavioural Sciences) uploaded his paper on children's understanding of changes in body weight\*.

"As soon as the paper was accepted for publication I uploaded it to Symplectic and the Library did the rest," says Professor Hill. "Adding it to Symplectic was quick and easy. Making it available in the institutional repository on acceptance not only makes the research available to the widest possible audience, it also ensures it will meet the open access (OA) requirements for the Research Excellence Framework (REF) 2020."

White Rose Research Online – [eprints.whiterose.ac.uk](http://eprints.whiterose.ac.uk) – means that uploaded publications are freely available for anyone to read, download and re-use as soon as any publisher embargo expires.

Staff in both the Library and the Research and Innovation Service are working with school and faculty-based contacts in a variety of different

ways to support academics and help them ensure their work is open access and REF-ready.

More information about local support is available at [goo.gl/4pgjec](http://goo.gl/4pgjec) and further details about OA are at [library.leeds.ac.uk/open-access](http://library.leeds.ac.uk/open-access) or via email at [research@library.leeds.ac.uk](mailto:research@library.leeds.ac.uk)

\*Baxter, SL, Collins, SC and Hill, AJ (2015, in press). *Thin people...they're healthy. Young children's understanding of body weight change*. Pediatric Obesity ISSN 2047-6302 [eprints.whiterose.ac.uk/90605/](http://eprints.whiterose.ac.uk/90605/)



## ORCID – connecting research and researchers

**An ORCID identifier is a unique, lasting personal identification number that researchers can use to attach their identity to research objects such as datasets, articles, media stories, citations, equipment, experiments, patents and notebooks.**

The University's Publications Policy encourages staff to register for an ORCID identifier and include it on personal webpages, when submitting a publication and when applying for grants to ensure they are credited for their work.

To make it even easier to obtain an ORCID identifier, staff can now register an existing ORCID number or obtain one through the Employee Self Service. There is more information about ORCID at [www.orcid.org](http://www.orcid.org) and a blog, '6 things to do now you have an ORCID ID', at [goo.gl/GMxDwy](http://goo.gl/GMxDwy)

## Students



Working on a hip simulator



Work experience in industry



CDT students in a lab

# Discovering more about doctoral training

**The launch of a collective website, Discover, will help prospective PhD students to identify the best opportunities in the six Faculty of Engineering EPSRC\* Centres for Doctoral Training (CDTs).**

The CDTs – Bioenergy, Fluid Dynamics, Tissue Engineering and Regenerative Medicine, Complex Particulates, Products and Processes, Tribology, and Next Generation Nuclear – represent over £14m funding from EPSRC, and have 200 PhD scholarships available over five

years. Next Generation Nuclear and Tribology are joint centres with the Universities of Manchester and Sheffield, respectively.

"Each CDT represents a very broad range of projects and students from almost all areas in science and engineering are eligible to apply. With some overlap between the work of the different centres, there is great potential for students to apply for studentships at several centres and if successful, select the one that suits them best," explains James McKay, Centre Manager. "The Discover campaign will enable sharing of information to make sure the best

applicants find the best places.

"Academic staff can alert final-year undergraduate and postgraduate students to CDT opportunities, advise them to browse the Discover website and then contact Centre Managers for more information."

Application deadlines for entry in September 2016 are different for each CDT, but are all due before end of January 2016. More information can be found at [www.discover.leeds.ac.uk](http://www.discover.leeds.ac.uk)

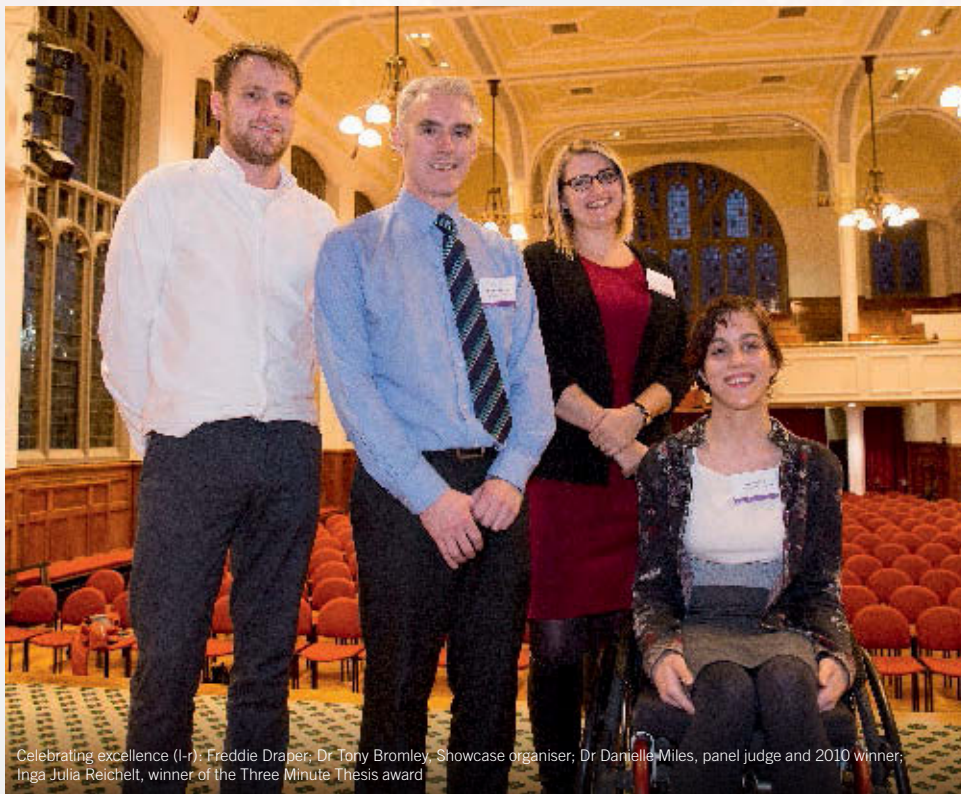
\*Engineering and Physical Sciences Research Council



## Students

# Celebrating excellence in postgraduate research

This year's Showcase – our annual celebration of excellence in postgraduate (PG) research and the contribution made by the PG community to the University's research – attracted record numbers, with 300 people submitting entries or registering to attend the event.



Celebrating excellence (l-r): Freddie Draper, Dr Tony Bromley, Showcase organiser, Dr Danielle Miles, panel judge and 2010 winner, Inga Julia Reichelt, winner of the Three Minute Thesis award



Winner Freddie Draper

The judges for all four categories – Postgraduate Researcher of the Year, Three Minute Thesis, Research Image and Research Poster – were impressed by the calibre of the entries and struck by the enthusiasm of the entrants. Winner of the coveted Postgraduate Researcher of the Year award was Freddie Draper (Environment) for his work on improving our understanding of Amazonian peatlands. The judges praised the meticulousness of his research, which was often carried out in challenging conditions, the breadth of his communications and the potential impact.

Dr Danielle Miles, winner of the first PRG conference in 2010, was a judge for this year's Postgraduate Researcher of the Year competition. Looking back on her own experiences of taking part in the competition, she says: "I benefited from the communication training and support I received in the run-up to Showcase competition. It was the first time I'd had to compose an impact statement, write an abstract and present a poster to a non-specialist audience. Impact is becoming more and more important in academia and taking the time to think through the impact of your research is really valuable. This competition helped me to think about the bigger picture of my research and its importance – it was a really uplifting, motivating and worthwhile thing to do."

## Campus

# Campus developments – update

Our ambitious five-year plan to transform the University campus is now well underway, as we invest £520m in the development of new sites and the refurbishment of our older buildings.

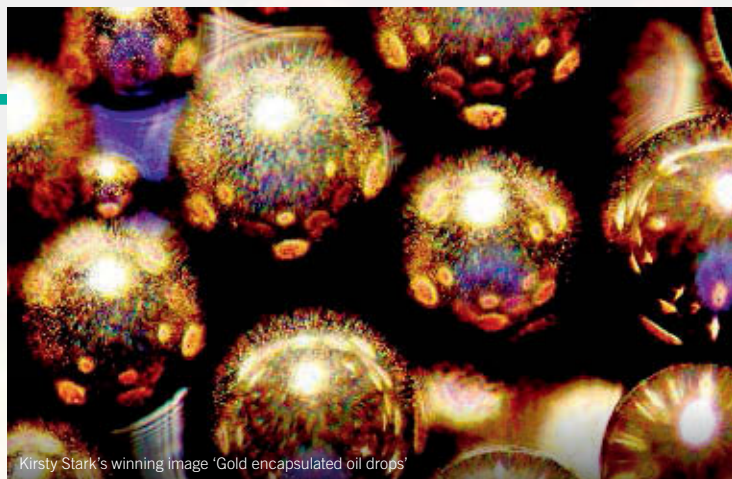
This significant investment is being made in collaboration with faculties and schools, and will support the Strategic Plan by further enhancing our students' experience, and growing our research income through the development of new research platforms. As a result, students, staff and key partners will have access to new, world leading facilities and equipment, such as electron microscopy and nuclear magnetic resonance imaging in the £17m Astbury Centre, and the new University Enterprise and Innovation Centre which will enable our researchers to build relationships and work

collaboratively with external organisations.

Individual project investments range from £90m to £90k, and several are already underway including a £40m refurbishment of the School of Medicine, an £8m refurbishment of the Grade II listed Fine Art building, and the £25m refurbishment of Edward Boyle Library. Building works are nearing completion on the multi-storey car park and the Treasures of the Brotherton Gallery, with both set to open in early 2016.

A new website showcasing the plans to transform the campus has been launched; to read more about all the projects taking place and sign up for regular news updates visit [campusdevelopments.leeds.ac.uk](http://campusdevelopments.leeds.ac.uk)





Kirsty Stark's winning image 'Gold encapsulated oil drops'

"It also sparked my interest in public engagement. I believe that one of our jobs as scientists is to engage with as many people as possible, and Showcase provided me with numerous opportunities to enthuse and spread the word on my work. Participating in the competition helped to raise my visibility in the University and also enabled me to expand my professional networks outside my school and close academic circle."

Dr Miles is now a research fellow in Chemistry and a member of the Institute of Medical and Biological Engineering. She is shortly taking up a post as Technical Innovation Manager in the new Medical Technologies HEFCE Catalyst.

*"I completed my PhD in 2011 and obtained an NIHR lectureship to complete my clinical training and continue research. I obtain two fellowships to fund my work in bowel cancer research, and also managed to complete my fellowship exams for the Royal College of Pathologists. I recently started as a University Clinical Academic Fellow in Molecular and Digital Pathology and have an Honorary Consultant Contract with Leeds Teaching Hospitals Trust to continue my clinical work in gastrointestinal pathology."*

**Dr Nick West**, winner 2011

*"I've been lucky enough to secure a job working for a leading outdoor clothing and equipment brand, where I work as a Product Engineer, applying some of the knowledge that I learnt during my PhD to real products. I go through the nitty gritty details, crunch data, and give presentations about things we do that make our products better. Somehow I've ended up with my dream job working for a company I really admire, and applying some of the things I learnt during my PhD: perfect!"*

**Matthew Fuller**, winner 2012

## WINNERS

### The Postgraduate Researcher of the Year

**Winner:** Freddie Draper  
(Environment)

**Runner up:** Elisabeth Dufton  
(Performance, Visual Arts and Communications)

**Third:** Jayakrishnan Chandrappan  
(Engineering)

### Three Minute Thesis

**Winner:** Inga Julia Reichelt  
(Sociology and Social Policy)

**Runner up:** Laura Wastall  
(Medicine)

**Third:** Kate Fox  
(Performance and Cultural Industries)

### PGR Poster of the Year

**Winner:** Anastasia Alataki  
(Medicine)

**Runner up:** Joseph Norton  
(Mechanical Engineering)

**Third:** Claire Castle (Music)

**Highly commended:**  
Philippa Hearty (Healthcare)  
and Ged Doherty (Sociology  
and Social Policy)

### Postgraduate Research Image of the Year

**Winner:** Kirsty Stark  
(Chemical and Process Engineering)

**Runner up:** Dimitra Flouri  
(Mathematics and Leeds Institute  
of Cardiovascular and Metabolic  
Medicine)

More information can be found at [www.pgrconference.leeds.ac.uk](http://www.pgrconference.leeds.ac.uk) and will also be in the next Reporter.

## Campus

# New bust of Nobel prize winner

**A bust of Sir William Henry Bragg, the Leeds professor who developed one of the most influential scientific techniques of the 20th century, has been installed in Parkinson Court.**

The bust marks 100 years since Sir William Henry Bragg, Cavendish Chair of Physics at Leeds from 1909 to 1915, won the Nobel Prize in Physics with his son William Lawrence Bragg for the development of X-ray crystallography. Their research revolutionised science by allowing researchers to peer into the atomic structure of materials for the first time.

The bust, a bronze cast by the Australian artist Robert Hannaford, will initially be situated in Parkinson Court, but is expected to be moved into the Bragg Centre, a new interdisciplinary research centre in engineering and the physical sciences recently approved by the University's Council, when it opens. An identical bust has recently been installed at the University of Adelaide, where William Henry Bragg gained his first professorship.





## Campus

# Behind the hoarding: Treasures of the Brotherton Gallery set to be revealed

Shakespeare's First Folio, original material written by the Brontës, illuminated medieval manuscripts and rare books from across the globe will soon be on display to the public when the University's new Treasures of the Brotherton Gallery opens early next year.

Gallery and Special Collections staff have been working hard behind the scenes in preparation for the launch of this Heritage Lottery-funded (HLF) project, from the build to marketing and final object selection.

Set to open its doors to the public in February 2016, the Gallery will be the new public face of the important Special Collections held at the University.

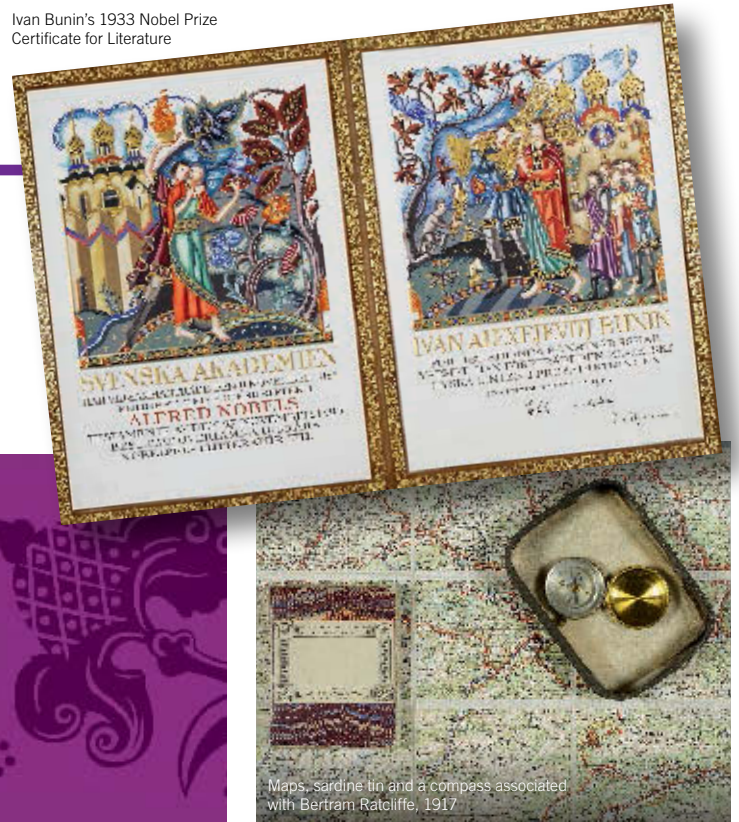
Marketing and Galleries Officer Laura Beare says: "Now that the hoarding is down and the first signs of the Gallery can be seen



in Parkinson Court, with visually striking banners, signs and boards, the excitement is definitely building. We can't wait to share this amazing space, the fascinating stories and all the collections with the University and wider public."

Special Collections holds an unprecedented five collections, which have been identified as nationally significant through the Arts Council

Ivan Bunin's 1933 Nobel Prize Certificate for Literature



Maps, sardine tin and a compass associated with Bertram Ratcliffe, 1917

England Designation Scheme. These are the: English Literature Collection, Leeds Russian Archive, Little Collection, Cookery Collection and Romany Collection.

The Treasures of the Brotherton Gallery project received a grant of £1.3m from the HLF, together with a generous private donation from the Brotherton-Ratcliffe family.

## Daily, weekend and evening parking – register your car!

**From 4 January 2016, an automatic number plate recognition system (ANPR) is due to be introduced to manage the main Orange Zone car park on campus.**

The new ANPR system means that only staff day parkers who have booked in advance, permit holders and authorised visitors will be able to park during the core hours of 7:00am-5:00pm, Monday to Friday.

Staff who do not have a permit will be able to use the car park free of charge outside the core hours, including weekends, bank holidays and University closed days.

All colleagues wishing to park at the University car parks out of core hours will need to log their car number plate by registering on the Park IT system at [www.leeds.ac.uk/carparking](http://www.leeds.ac.uk/carparking). Under the new parking enforcement terms and

conditions, any staff vehicle not registered on the system will be issued with a parking charge of £80 (reduced to £40 if paid within 14 days). Please refer to the parking terms and conditions on the University parking website.

In order to make the system as efficient as possible, access to the Orange Zone car park will be through two entrances – Parkinson Building and Willow Terrace. The exit point on Lodge Street and the former access point at Fenton Street will be closed.

The system removes the need for automatic barriers, resulting in a better flow of traffic in and out of the car park. It will also provide key information on the use of parking spaces to allow better management of permit allocations. New pay stations will also be available to enable members of the public to pay for parking outside core hours. These will be located in the new multi storey and The Edge car parks.



## Campus

# Refectory gets a makeover

The Refectory is undergoing refurbishment and refreshing its food offer ready for launch in January 2016.

Alongside works on the new design and layout, the Great Food at Leeds team have been working hard to transform the current food offering, including delicious new menu items.

To celebrate the launch of the refurbished

Refectory, the team will be running some exciting competitions and giveaways. More information will be available on the Great Food at Leeds website in the coming weeks, and you can keep up to date with these and other news about the Refectory's progress at [goo.gl/XqPOFY](http://goo.gl/XqPOFY)

**Please note** – until completion, a small part of the Refectory service area will be unavailable. Services will also be slightly reduced but most counters will operate as normal.



The new look Refectory

# Share your climate change story

Reflecting interest in the COP21 Paris Climate Change Conference, our Sustainability team is looking for a wide range of stories to represent the global community at Leeds. Stories and experiences of climate change could be anything from encounters with extreme weather to lost livelihoods, accounts of how an issue has resonated with you from afar, or how climate change has affected the way you see the world and the actions you take.

This competition is open to staff, students and the general public. Stories should be between 250 and 1,000 words; deadline for submissions is 18 December.

A selection of the best stories will be compiled and published, and the best writers will get tickets to the Annual Sustainability Awards dinner.

For more information or to submit an article, please contact Catherine Graves at [c.a.graves@leeds.ac.uk](mailto:c.a.graves@leeds.ac.uk)

# Christmas shutdown

This year's Christmas shutdown is taking place between 24 December and 1 January. The Sustainability team asks colleagues to turn off equipment such as PCs, photocopiers and empty fridges during the Christmas period to help reduce the University's energy use and carbon footprint.

The shutdown makes significant savings in energy and carbon emissions. As a result of last year's shutdown, the Worsley Building alone saved 32,000kWh of electricity – enough to supply the electricity needs of the Student Counselling Centre for a whole year.

# Sustainability training for managers

The Sustainability team and the Staff and Departmental Development Unit (SDDU) have developed a training session to help leaders and managers develop their knowledge and understanding of sustainability.

The first training session in November was well received and participants reported a wider understanding of what sustainability is and how they can embed it in their workplace.

All staff in management roles are welcome to join the next course. For more information, visit the Sustainability website at [goo.gl/diZXae](http://goo.gl/diZXae) or register for a training session on the SDDU pages at [goo.gl/czdiZN](http://goo.gl/czdiZN)

# Recycle your bicycle!

Do you have an unused or unwanted bike? Sustainability, together with STARbikes, is collecting bikes to refurbish and donate to refugees in and around Leeds to make getting around easier for people new to the area.

If you have a bike or bike spares you would like to donate, please get in touch with Sustainability by emailing [sustainability@leeds.ac.uk](mailto:sustainability@leeds.ac.uk) or bring it in to the Bike Hub during its normal opening hours of 12:00-4:00pm, Tuesday to Thursday.





## In the news



© Michelle Parks (University of Iceland)

Professor Jennifer Tomlinson (Leeds University Business School) featured on BBC *Look North*, BBC Radio Leeds and BBC *Sunday Politics, Yorkshire and Lincolnshire*, talking about the rise of the new **Women's Equality Party in Yorkshire**.

Dr Richard Cubbon (Leeds Institute of Cardiovascular and Metabolic Medicine) featured in the *Guardian* and the *Mail Online* about his research, which could lead to new **drugs that help to prevent heart attacks and strokes associated with diabetes**.

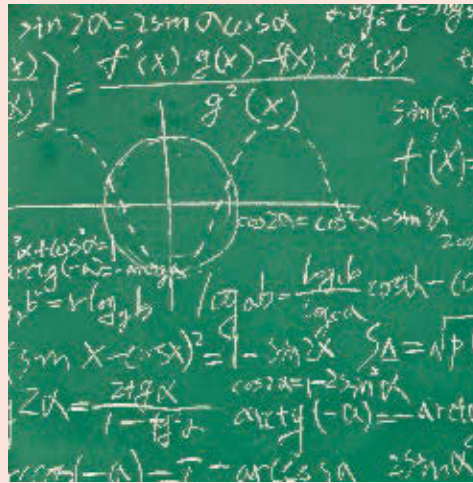


Researchers at the University believe **volcanoes weren't to blame for wiping out the dinosaurs**. Dr Anja Schmidt (Earth and Environment), lead author of the study, featured in the *Washington Post*, the *Independent*, *Daily Mail*, *Mirror*, *Metro* and various other regional news outlets.

Dr Mike Evans (Mathematics) was quoted in the *Yorkshire Post* talking about the **huge influence Albert Einstein's work** still has on applied physics, mathematics and scientific understanding today.

Professor David Spencer (Leeds University Business School) wrote about **working when ill**, and the implications for both the employee and employer, for *The Conversation*. The article was also featured in the *Independent*.

Dr Stephen Wright (Chemical and Process Engineering) was interviewed by Sky News and BBC World Service Radio about the causes of the **Russia airliner crash**. Dr Wright was also quoted in the *Washington Post* and the *Telegraph*.



Michael Randall (PhD student, Law) was interviewed and featured on BBC *Look North*, outlining EU law and the complications surrounding the **tampon tax**. Freya Govus (Welfare Officer, Leeds University Union) also featured.

News that Leeds and **Southwest Jiaotong University** have opened a new joint school based in Chengdu, China, gained extensive international coverage in *Xinhua Net*, *China News*, *China Daily* and *China Education News Net* (see Reporter 593).

Ahead of the COP21 Climate Change Conference in Paris, Professor Andrew Shepherd (Earth and Environment) was referenced for his research on the **west Antarctic and Greenland ice sheets** in the *Washington Post* and other US media.

Dr Adrian Gallagher (Politics and International Studies) discussed data about **security in western Europe** in the *Huffington Post*, saying we could actually be living in the most peaceful period of human history.

Dr James Roberts (Leeds University Business School) featured in an article in the *Guardian* discussing **MBA**s (Masters of Business Administration) and what they have to offer.

Professor Andy Gouldson (Earth and Environment) talked about the **COP21 climate change conference** in Paris and the possible benefits of 'smart cities' on BBC *Breakfast* and BBC *Look North*.

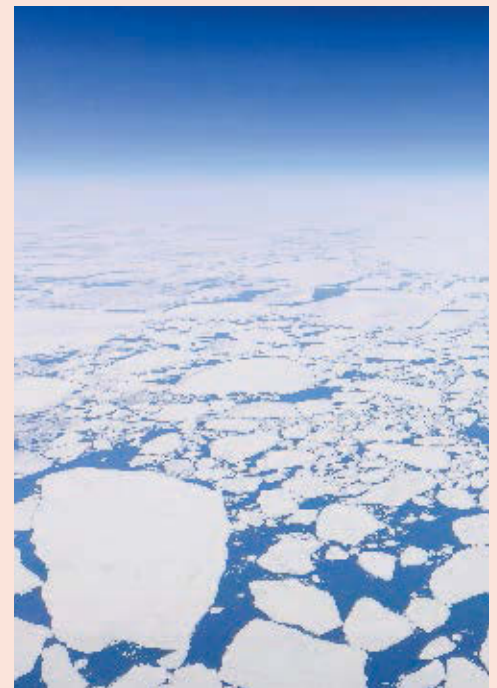
Dr Simon Warner (Music) spoke on BBC Radio 5Live about the perceived decline in the **status of pop talent TV reality shows**, after news that *The Voice* is moving from BBC to ITV.

Dr Roger Parslow (Medicine) is featured in a *BT News* and *ITV News* article talking about a report that has found that just 15% of **children's intensive care units** across Britain and Ireland have enough staff.

Dr Duncan Wheeler (Art) discussed **moves to restrict bull fighting** in *Newsweek Europe*.

Toke Dahler, Affairs Officer at Leeds University Union, discussed the issue of **free speech on campuses** on BBC Two's *Newsnight*.

The *Guardian*, *Yorkshire Post* and *Financial Times* reported on the University's **spin-out company Xeros's £40m expansion**. Xeros uses polymer bead technology to reduce water and energy use in washing machines.





## Honours

The **University** won the Entrepreneurial University of the Year category at the Times Higher Education (THE) awards. This award aims to recognise a university that has developed an environment and culture that fosters enterprising attitudes among all members of its community.

Professor Nigel Lockett, Director of Enterprise Learning, says: "This award is the ultimate accolade for any enterprising university and the culmination of years of hard work across the whole University.

"From student start-ups to spin-out companies and from exceptional enterprise education to supporting high-growth firms in the region, what differentiates Leeds is our commitment to commercialising world-leading research and enabling enterprise students and graduates to make economic, social and cultural impact.

"Building this sector-leading enterprise offer is the result of the support and collaboration of staff, students, alumni and entrepreneurs – a winning team."

The University was shortlisted in two other categories. We were nominated for Outstanding Employer Engagement Initiative, in recognition of the University's collaboration with Marks & Spencer, and Dr Luke Burns (Geography) was nominated as 'Most Innovative Teacher of the Year' for his use of technology in teaching.

The THE award comes shortly after the University won The Duke of York Award for University Entrepreneurship at the 2015 Lloyd Bank National Business Awards.

Leeds has also been ranked as third best in the UK for student employability. In the new QS Graduate Employability Rankings 2016, we were behind only Oxford and Cambridge in the UK, and placed in the world's top 20.

**Professor Surya Subedi** (Law) was one of the top international lawyers chosen for video interview by the American Society of International Law to discuss the role of the United Nations and international law, and the place of human rights in our society. The video will be distributed to high schools across America.

**Dr Philip Helliwell** (Leeds Institute of Rheumatic and Musculoskeletal Medicine) has been honoured with the designation of Master by the American College of Rheumatology (ACR). This is one of the highest honours that the ACR bestows on its distinguished members.

**Dr Paul Wragg** (Law) has been appointed to the Impress Code Committee, a press regulatory role, to advise the board on the construction of the code and related guidance.

**Dr Kersten Hall's** (Philosophy, Religion and History of Science) book *The Man in the Monkeynut Coat*, was shortlisted for the British Society of Science's 2015 Dingle Prize. The book explores the life of biophysicist Professor William T Astbury, who made some of the very first attempts to solve the structure here in Leeds. Read more at [goo.gl/nRx3aq](http://goo.gl/nRx3aq)

**Dr David Aildred** (Healthcare) has been designated a Fellow of the Royal Pharmaceutical Society for distinction in the profession of pharmacy. Fellowship is awarded to members who have made an outstanding, original contribution to the advancement of pharmaceutical knowledge or attained distinction in pharmacy.

**Professors Anna Madill** (Psychology) and **Timothy Devinney** (LUBS) have been honoured with Fellowship of the Academy of Social Sciences.

Professor Madill's work focuses on wellbeing and, increasingly, on gender and sexuality. She is an outstanding role model for women in the social sciences and is an effective and dedicated Athena SWAN Champion.

Professor Devinney is a leading figure in the field of business and management, and has a particular interest in the impact of ethical and social values on individual behaviour. His research, teaching and public service has been recognised with numerous best paper and teaching awards.



**Professor Theo Raynor** (Healthcare) received a Lifetime Achievement in Pharmaceutical Practice Award from the Fédération Internationale Pharmaceutique (FIP) at a ceremony in Dusseldorf.

Professor Raynor says: "This award is recognition of many years of hard work. Improving information about medicines is fundamental because it helps make a patient's life a little bit easier. To be the first UK recipient of this award is very humbling."

Presenting the award, Phil Schneider, FIP Vice-President, said: "Theo has pioneered innovative, patient-centred research in communicating medicines information supplied to patients through pharmacists and patient leaflets. His vision was not only to produce solid academic work on this topic, with over 150 research publications, but also to push for its translation into policies such as the introduction, in 2005, of mandatory user testing of patient information leaflets by the public. This policy transformed pharmacy practice as well as informing – and I would also say empowering – the public."

More details can be found at [goo.gl/JakGFD](http://goo.gl/JakGFD)

**Phil Murphy** (Earth and Environment) has published a new book called *Exploring the Limestone Landscapes of the Cumbrian Ring*, a guide to the geology and landscapes around the Lake District.

**The University's** Discovery Theme, Creating Sustainable Futures, has won the Learning and Skills category at the Environmental Association for Universities and Colleges (EAUC) awards. Professor William Yong (Earth and Environment), Theme Leader, says: "This award represents the great collaboration of staff from across the University. It means students get the multi disciplinary theories and the practical experience that will broaden their horizons, so that they can contribute to solving the sustainability issues we all face."





## News

# New fund to enhance impact of our social sciences

**A new fund has been established to encourage and support research excellence with impact across the social sciences at the University.**

The Leeds Social Sciences Institute (LSSI) recently announced the launch of a University-funded Impact Acceleration Account (IAA), which will be run in association with the Economic and Social Research Council (ESRC). The IAA will run from 2015-2018, supporting our social scientists to engage with external partners and maximise the influence of their research on society and the economy.

Melanie Knetsch, Head of Knowledge Exchange and Strategic Partnerships at ESRC, says: "The ESRC welcomes the investment by the University in an IAA which will enhance the impact and reach of research across the social sciences. By funding it in this way, this Leeds IAA will have access to the ESRC IAA Network and develop collaborative links between the University and others within the network."

Professor Adam Crawford, Director of LSSI, says: "The LSSI is looking forward to providing the cross-faculty framework for delivering the ambitious IAA business plan and ensuring the funds are effectively targeted to support research excellence with impact and knowledge exchange across the social sciences.

"The University's ongoing commitment to impact has been acknowledged by the ESRC

and this investment will provide additional resources for social scientists at Leeds to maximise the societal impact of their research. It will also enable us to build on the excellent performance that the Leeds social sciences secured in terms of impact as part of the Research Excellence Framework 2014.

"We look forward to coordinating the strategic allocation of this fund and working with the ESRC and other institutions within the ESRC IAA network to share best practice."

The IAA supports the following activities:

- Responsive mode impact fund – *providing flexible funding for cross-disciplinary projects that demonstrate strong user engagement*
- Knowledge exchange fellowships – *facilitating the movement of people between external organisations and the University to build and strengthen relationships*
- Postgraduate researcher placements – *supporting short-term external placements.*

More details of the IAA and how to apply for funding is at [www.lssi.ac.uk](http://www.lssi.ac.uk)

## Small ads

### Professional services

#### COMPUTER PROBLEMS?

Ex-staff member offers prompt and efficient technical support, repair, and upgrade service for all types of computers, peripherals, and network devices. Same or next-day response.

Abdul Karim 07958 638 686  
info@biztechleeds.co.uk

#### COSMETIC BREAST SURGERY

Breast Reduction, Augmentation and Gynaecomastia Surgery. Consultant Specialist Breast Surgeon: Leeds Nuffield Hospital.

Philip Turton  
lisa.harris@nuffieldhealth.com  
www.cosmeticbreastsurgeon.co.uk

**ELECTRICIAN AND TEST ENGINEER** for PAT testing, Periodic installation inspection and testing, installation repairs. City and Guilds qualified, fully insured. Fair pricing for a professional service.

Richard Sykes 0777 249 9414  
good\_connections@btinternet.com  
www.goodconnectionselectrician.co.uk

### Holiday home to let

#### ISLAND HOUSE TO RENT

Beautiful house on Florida island minutes from the beach, sleeps 6 on Gulf coast.

Neil Howson, n.howson@leeds.ac.uk  
www.gulfdream.me

Small ads can be submitted online at [smallads.leeds.ac.uk](http://smallads.leeds.ac.uk) The charge is £7 for 10 words or part thereof (University members) or £10 (general public). The deadline for the next issue is Friday 15 January at 12 noon. Advertisers are independent of the University. The University makes no warranty or representation as to (a) the accuracy of ads or (b) the quality of goods or services advertised. To the full extent allowed by the law the University excludes all liability. Contact the Reporter on 0113 343 6699 or [the.reporter@leeds.ac.uk](mailto:the.reporter@leeds.ac.uk)



## Events

### Crafty Christmas Party

**Saturday 19 December, 2:00-4:30pm,  
The Stanley & Audrey Burton Gallery**

Bring along family and friends to this free event and get into the festive spirit. Inspired by the University's wonderful art collection, make your very own 3D winter wonderland.

All materials and refreshments will be provided. More information about this event can be found on The Stanley & Audrey Burton Gallery website at [goo.gl/OhAvXe](http://goo.gl/OhAvXe)



**Chitty Chitty Bang Bang**  
Now showing until  
**Tuesday 26 January 2016**  
West Yorkshire Playhouse

Having broken all box office records in the West End, this fun-filled performance promises laughs and your favourite *Chitty Chitty Bang Bang* songs.

There are also dementia-friendly and relaxed performances of the production.

Find out more or book tickets on the West Yorkshire Playhouse website at [goo.gl/15ITbF](http://goo.gl/15ITbF)



### Life Drawing workshop

**Saturday 9 January 2016, 2:00-4:00pm**  
The Stanley & Audrey Burton Gallery

Gallery favourite and life drawing tutor extraordinaire Rob Oldfield is back with us for 2016.

This workshop is open to everyone, from newcomers who want to take up a hobby in the New Year through to experienced artists looking to hone their sketching skills.

Materials will be supplied, but please feel free to bring your own too.

Rob Oldfield has been leading our life drawing classes since August 2014 and everyone is a fan! Rob is a York-based artist, graphic designer, sign writer, art technician and tutor. He has modelled for life classes for many years as well as teaching life drawing to his students. As a tutor, Rob encourages, advises and listens, so please do come along and take advantage of his skills and experience.

Suitable for ages 16+. Please note there is a £10 charge for this workshop. Use the online booking system to reserve your place at [goo.gl/JbjghQ](http://goo.gl/JbjghQ)

For further information, please contact the Gallery at [gallery@leeds.ac.uk](mailto:gallery@leeds.ac.uk) or 0113 343 2778.



### Universities Superannuation Scheme (USS) update

**Thursday 14 January 2016**

Changes to USS benefits will be implemented with effect from 1 April 2016.

USS representatives will be visiting Leeds on 14 January 2016 to explain the scheme changes in more detail. An email invite has been issued and any member wishing to attend must follow the links in the email to book a place.

The final salary section of the scheme will close with effect from 31 March 2016 and all final salary members will build up future benefits in the Career Revalued Benefits (CRB) section with effect from 1 April 2016. A salary cap will apply from 1 October 2016, when the new defined contribution (DC) section of the scheme will be set up. Further details will be provided early next year about the DC element of the scheme.

If scheme members wish to find out more about these changes, USS has now launched its For the Future website at [forthefuture.uss.co.uk](http://forthefuture.uss.co.uk)

A new benefit illustrator has been added to the website, which allows members to log in and get an estimate of their future retirement benefits under the revised scheme structure.

### Student Education Conference and Digital Festival

**Thursday 7 and Friday 8 January 2016, 1:00-5:00pm**

This conference will examine and share ways we can support our claim to offer students excellence in student education and give delegates the chance to come face to face with the technology that might enable us to evidence that excellence.

The Student Education Conference and Digital Festival will consider how we evaluate the impact of what we do and how we interpret that impact.

Download a full programme and book your place through the SES website at [goo.gl/13S5tu](http://goo.gl/13S5tu)





## FAQs

# Simon Jenkins, Development Communications Officer, Leeds alumni



### How did you come to work at the University?

I thought I'd be a journalist forever. It's what I'd wanted to be since I was a child. There are few things more rewarding than getting a great news story and seeing it through to the printed page. But even working on a lively daily newspaper eventually lost its appeal and I was ready for a change. I'd freelanced for the University for years – including writing the FAQ column, as it happens – so when a job came up in the press office it seemed a perfect move.

### So, how did you end up with the Making a World of Difference campaign?

After three years in the press office the chance came to move to Alumni and Development. It was an exciting time, with the prospect of launching the University's first fundraising campaign since the 1920s. There were brochures to write, films to make, academics to interview, a website to build. For me the challenge is explaining the University's work, particularly its research but also our outreach activity and the scholarships we provide, in an accessible, compelling way that engages with donors and encourages them to give.

### And it's been a big success...

Sure. The campaign board is made up of some senior alumni and they pushed us to aim high and raise £60m by the end of 2015. Naturally, people questioned whether this would be possible but it has been a remarkable success. We called the campaign 'Making a World of Difference' and it's no stretch of the imagination to say that's exactly what it's doing. Just look around – more than a thousand scholarships, new PhD students, lots of new academic posts

and research fellowships, the art gallery, a new library – the benefits are astonishing.

### And you reached the target?

Six weeks ahead of schedule. In a fairer world we'd have been given a long holiday but that didn't happen. The obvious question is, what next? And the obvious answer is, more of the same. We'll be announcing the new target for the campaign soon, but what's apparent is that our donors – and we have more than 14,000 – feel as passionately about the University as we do. It's a partnership of people moving in the same direction. But before we move on, we must stop and acknowledge their incredibly generous support and say thank you as loudly and as often as we can.

### But the fundraising continues?

Of course. The research projects we will be supporting will be announced in the New Year. But each year more bright students from disadvantaged backgrounds come to Leeds and we must do all we can to give them the financial and practical support they need to achieve everything they are capable of. Whatever else we do, that need will never go away.

### And you've also been writing about beer for almost a quarter of a century. What are the changes you've seen in that time?

When I started my column in the *Yorkshire Evening Post*, many pubs didn't sell a single cask ale; keg beer was bland and mass-produced. The last 25 years have seen a remarkable renaissance in the trade and there's greater choice for drinkers than ever before.

### You must be pleased that your book, the *Great Leeds Pub Crawl*, has just been reprinted. Tell us about some of your favourite haunts in the city.

The reprint was long overdue. Since the first edition in 2011, a host of new pubs, bars and breweries have opened. I love the old ones of course, like Whitelocks and the Victoria, but places like the Belgrave and the Black Swan show how new bars can thrive by placing beer at the heart of their operation.

### What beer would you suggest to go with Christmas dinner?

Something zesty, like Mary Jane from Ilkley, would cut through the rich flavours of turkey, stuffing, gravy and vegetables. Dark, mellow Rudgate Ruby Mild from Tockwith would go beautifully with Christmas pudding.

### What's your most frequently asked question?

"So Jenks, what's the best pub in Leeds?" Thankfully, most people don't expect an easy answer – because there isn't one.

### Beer matters aside, if you were to write another book what would it be about?

Interesting people. I love interviewing people. It's all about asking the right questions so they open up without feeling it's an intrusion. I'd like to write a history of the University too, but no one has ever asked.



When you have finished with this leaflet please recycle it

100% recycled

This leaflet is printed on 100% recycled paper



UNIVERSITY OF LEEDS