



Celebrate week 2015

A week of celebrations in Leeds University Union gave recognition and thanks to the achievements of staff and students over the last 12 months.

Page 7

Public engagement network open to all

The University's Pepnet network is for all University staff interested in public engagement events and activities.

Page 8

Partnering for growth

The University is marking the completion of its 100th successful Knowledge Transfer Partnership (KTP).

Page 9

Warmest of welcomes

The University is preparing for a busy month of open days.

Page 3

Leader column

Working together for Leeds

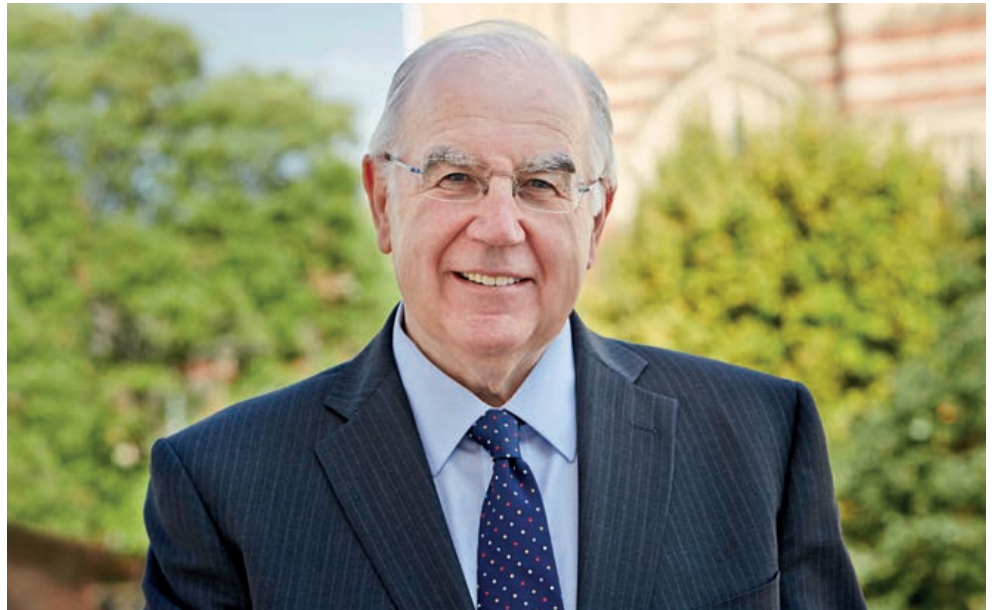
The new Conservative government has announced that it intends to implement its election manifesto in full. A number of policies included in the manifesto could significantly affect the financial and regulatory environment in which the UK's universities operate...but none of this should distract attention from our pursuit of academic excellence and the economic, social and cultural contributions we can make to the City, the Leeds City Region and the country as a whole.

The fiscal constraints facing the government coupled to a series of pre-election pledges on taxation and spending in protected departments such as health, mean that the Department for Business, Innovation and Skills (BIS) – which ultimately controls university spending – will be expected to take its share of financial savings. This will put education and research budgets under increasing strain over the next five years. Other elements of the government programme on immigration, the review of research councils and Europe will also present new challenges.

An in-out referendum on the UK's continued membership of the European Union will take place by 2017 at the latest. The UK's higher education institutions are the largest recipients of research funding from the EU, benefiting to the tune of £1.2 billion every year. Considerable financial support is also made available from Brussels for educational schemes such as the Erasmus programme and various postdoctoral study programmes.

Membership of the EU also provides easier access to a pool of talented staff and students from which to recruit, and facilitates the development of research networks and industrial partnerships with universities, businesses and other organisations across Europe. For these reasons, Universities UK (UUK) has indicated that it intends to make a strong case for the UK's continued membership of the EU in the coming months, as part of what will undoubtedly be a lively and impassioned national debate.

Our University benefits significantly from EU funding and we will do all that it can to maintain effective working relationships with the European Research Council and other EU bodies during this period of uncertainty. To ensure that we can respond rapidly to changing circumstances and that our voice is heard, we are combining with the Universities of Sheffield and York as part of the White Rose Consortium to open a small office in Brussels. This will be up and running shortly and will take us closer to the action at a critical time for UK/EU relationships.



Closer to home – and beyond our bottom line requirements to meet the needs and aspirations of students and to boost the quality, volume and impact of our research – we are firmly committed to working in partnership with industry, Leeds City Council, the Local Enterprise Partnership, the NHS, cultural organisations and the third sector. A strong foundation locally will give us the self confidence to look outwards.

For example, Leeds City Council, local NHS Trusts, clinical commissioning groups and the three universities in the city have agreed to work together. This new Academic Health Partnership (AHP) will harness academic, clinical and professional expertise to improve health and social care outcomes, reduce inequalities, prepare the future health and social care workforce and drive economic growth. The AHP is a long-term commitment to the people of Leeds, and the University has played a central role in forging this new way forward. The prospect for international collaborations down the line are enormous.

Equally important are the University's ambitious plans to develop a Cultural Institute which will add to the vibrancy of the cultural community and the creative industries at regional, national and international level. Proposals which build on the cultural traditions of the University are being developed by Professors Frank Finlay and David Cooper in consultation with a wide range of colleagues – both internal and external – and will be available in the autumn.

Plans for a University Innovation and Enterprise Centre (UIEC) are also progressing apace. This will provide a gateway to the best of our research, driving innovation in existing companies and the public sector, and stimulating the start-up of new high growth firms. The University will also play a leading role in providing unified support for innovation in regional small and medium-sized enterprises (SMEs), drawing on our national top 10 position for impact and working in collaboration with other universities and the Local Enterprise Partnership in the Leeds City Region.

Plans to increase the number of PhD studentships and to build a thriving community of young academics are also moving forward. Very soon we will announce an extension of the 110 Anniversary studentship scheme and the next cohort of University Academic Fellowships will be advertised as part of our ambitious '250 Great Minds' scheme, which is designed to attract talented individuals to establish an academic career at Leeds and play a key role in our ambitious plans for the future. Look out for further information published on 250greatminds.leeds.ac.uk

In the meantime, I am pleased to welcome our excellent new PhD students and the new University Academic Fellows, some who have already joined us and many more who take up post around the beginning of the academic year. To date, we have appointed over 70 outstanding individuals, including internal candidates and others from prestigious institutions like Harvard, Cambridge, ETH Zurich, Oxford, Princeton, Bristol, MIT, Edinburgh and Max Planck Institutes. All of them are people with the potential to make a major contribution to the University's long term academic performance and reputation, and we are delighted they have chosen to join us at Leeds.

The University has lived through 30 General Elections and many recessions in the past 111 years and yet we are still here to tell the tale – a tale of academic excellence, growth and development. As we continue on this path, in a world that is reducing in size but growing in complexity, we have to look outwards and we have to work in partnership locally, nationally and internationally to sustain excellence through a fully integrated approach to education and research and by playing our part in economic, social and cultural development.

Alan Langlands

News

Campus gets ready to give the warmest welcome

Open days: 19, 20 and 29 June

Preparations are in full swing to welcome over 25,000 visitors (around 12,000 prospective students) to campus during the University's three open days to be held on 19, 20 and 26 June.

Open days are a great opportunity for us to give prospective students and their families and friends a taste of life at Leeds. They're a chance to explore our fantastic campus and see our facilities, talk to staff and students about our courses and the wider Leeds experience, and to get a feel for what it would be like to be a student at the University of Leeds. As part of the day we deliver 245 talks and activities, which include demonstrations, drop-ins and tours of facilities and accommodation. The aim is to make a really positive impression, so that when the time comes to complete the UCAS application form Leeds is one of their top choices.

"Over 500 staff and students are involved in our open days from all areas of the University and it is thanks to their hard work, enthusiasm and commitment that the days are so successful," says Karen Innis, Head of Marketing. "The days receive consistently high approval ratings: 97% of visitors rate the day as excellent or good, and for many the open day experience helps them decide to apply to Leeds. Work is underway to ensure we build on and continue this success in June."

Two more open days are planned for later in the year on 12 September and 10 October.



CAMPUS GUIDE

14 School of Business Administration 15 School of Business Administration 16 School of Business Administration 17 School of Business Administration 18 School of Business Administration 19 School of Business Administration 20 School of Business Administration 21 School of Business Administration 22 School of Business Administration 23 School of Business Administration 24 School of Business Administration 25 School of Business Administration 26 School of Business Administration 27 School of Business Administration 28 School of Business Administration 29 School of Business Administration 30 School of Business Administration 31 School of Business Administration 32 School of Business Administration 33 School of Business Administration 34 School of Business Administration 35 School of Business Administration 36 School of Business Administration 37 School of Business Administration 38 School of Business Administration 39 School of Business Administration 40 School of Business Administration 41 School of Business Administration 42 School of Business Administration 43 School of Business Administration 44 School of Business Administration 45 School of Business Administration 46 School of Business Administration 47 School of Business Administration 48 School of Business Administration 49 School of Business Administration 50 School of Business Administration 51 School of Business Administration 52 School of Business Administration 53 School of Business Administration 54 School of Business Administration 55 School of Business Administration 56 School of Business Administration 57 School of Business Administration 58 School of Business Administration 59 School of Business Administration 60 School of Business Administration 61 School of Business Administration 62 School of Business Administration 63 School of Business Administration 64 School of Business Administration 65 School of Business Administration 66 School of Business Administration 67 School of Business Administration 68 School of Business Administration 69 School of Business Administration 70 School of Business Administration 71 School of Business Administration 72 School of Business Administration 73 School of Business Administration 74 School of Business Administration 75 School of Business Administration 76 School of Business Administration 77 School of Business Administration 78 School of Business Administration 79 School of Business Administration 80 School of Business Administration 81 School of Business Administration 82 School of Business Administration 83 School of Business Administration 84 School of Business Administration 85 School of Business Administration 86 School of Business Administration 87 School of Business Administration 88 School of Business Administration 89 School of Business Administration 90 School of Business Administration 91 School of Business Administration 92 School of Business Administration 93 School of Business Administration 94 School of Business Administration 95 School of Business Administration 96 School of Business Administration 97 School of Business Administration 98 School of Business Administration 99 School of Business Administration 100 School of Business Administration



Our student ambassadors are on hand to help and assist visitors to the open days

Contents

News

Page 3

Infrastructure and sustainability

Page 5

Opportunities for students

Page 6

Research and innovation

Page 8

International and community

Page 9

Collaboration and enterprise

Page 9

Valuing our people

Page 10

In the news

Page 12

Our people/honours

Page 13

News/small ads

Page 14

Events

Page 15

FAQs

Page 16

About the Reporter

The *Reporter* is the University of Leeds' staff magazine, produced eight times a year. More than 7,600 copies are distributed to our staff and stakeholders. The *Reporter* is produced by the Communications team.

If you have an idea for a story, want to write a letter, comment on this edition or would like to voice your opinion about University matters, please get in touch:

Email: the.reporter@leeds.ac.uk

Tel: (0113) 343 6699

Web: www.leeds.ac.uk/forstaff/reporter

If you would prefer to receive an electronic copy of the magazine, please email internalcomms@leeds.ac.uk quoting your staff number or, if you are external to the University, your name, postcode and preferred email address.

The front cover shows visitors enjoying campus during one of last year's open days.

News

New partners join international network

Three new universities – the University of Ghana, University of Massachusetts Amherst (UMass Amherst), and University of Basel – have joined the Worldwide Universities Network (WUN).

Leeds is a founding member of the WUN, which is a leading global higher education and research network made up of 19 universities, spanning 11 countries on five continents. Together, members work to drive international research collaboration and address issues of global significance.

The University of Ghana is the oldest and largest of the six public universities in Ghana. It has identified four priority areas for international collaboration in research initiatives: malaria; transdisciplinary research on climate change adaptation; enhancing food production and

processing; and development policy and poverty monitoring and evaluation. Leeds has existing links through public health research and in the social sciences, and has alumni in Ghana working in public health, business and transport.

The University of Massachusetts Amherst (UMass Amherst) is one of the largest public research universities in the US. It is a leader in life sciences, ranking third in funding from the National Science Foundation among Massachusetts colleges and universities, behind only MIT and Harvard. It also specialises in climate change research. Leeds has research links with UMass Amherst in medicine, physics and astronomy, social sciences and engineering, and promising links in relation to German, world cinema, medieval studies, and public understanding of science.

The University of Basel is Switzerland's oldest

university. It has an international reputation in life sciences, is a coordinating centre for the activities of several Swiss universities in international public health, and is regarded as a leader in pharmaceuticals and biotechnology. It has identified five key areas of research focus: life sciences, image studies, nanophysics and quantum physics, sustainability and energy, and European and global studies. It works closely with research institutions such as the Friedrich Miescher Institute for Biomedical Research, the Swiss Tropical and Public Health Institute, Swisspeace, and the Basel Institute on Governance. We have existing links with Basel in medicine and biochemistry.

Academics interested in establishing new research collaborations with these universities, extending the footprint of national research or accessing local equipment or facilities should contact Louise Heery (38799) in Research and Innovation Services.

Keep it on campus

Whether you're after an early breakfast, a working lunch or an impressive buffet for a celebration event, the University's Great Food at Leeds Deli(very) team can provide the answer – and a huge range of options to choose from.

"We freshly prepare and deliver food and drink all over campus every day of the week throughout the year, fulfilling more than 11,000 orders annually," says Simon Wood, Head Chef at Great Food at Leeds. "We're part of the

University so we can invest our profits back into the service, allowing us to keep making improvements to catering across campus and giving colleagues even better choice and service.

"We seek regular feedback from customers and menu options are now reviewed and changed twice a year to ensure variety throughout the year and to ensure that we only use the very best seasonal ingredients. We aim to use local and Fair Trade suppliers wherever possible and, of course, we can cater for special diets such as vegan or gluten-free. We also work with our customers to create bespoke menus, so if there's anything you'd like us to offer, just get in touch and let us know your requirements and we'll do our best to help."

Ordering is simple; the easiest way is online at gfa.leeds.ac.uk/delivered-food/

The Deli(very) team will be joining the MEETinLEEDS* team later in the year for a series of roadshows around campus. All academic and support staff are invited to attend to find out about the services the University can offer through the conference office and the catering teams.

Wednesday 7 October
at Café Seven, Worsley Building

Tuesday 27 October
at the Business School Foyer

Tuesday 10 November at Parkinson Court

Tuesday 24 November at the Waterside Café

Meanwhile, members of the Deli(very) team are keeping their fingers crossed as they have been shortlisted for the Top Team award in this year's Leeds Hotels and Venues Association's awards.

*See page 11 of Reporter 589 for more details of the MEETinLEEDS team services.



The Deli(very) team (l-r): Simon Wood, Chris Johnson, Arezki Aoumad and Kevin Rogers

News

Nanotechnology grant to keep the black stuff flowing

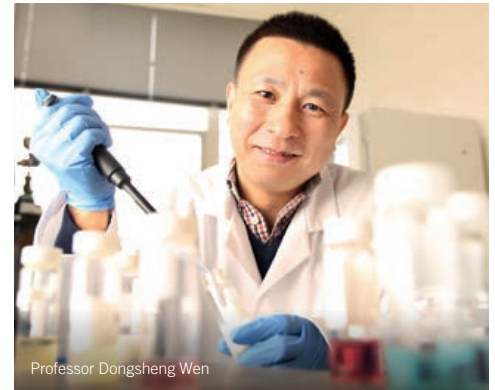
Oil has driven our economies for more than a century but we still know relatively little about its life underground, according to Professor Dongsheng Wen, Chair of Petroleum Engineering in the School of Chemical and Process Engineering.

A new €1.96 (£1.4m) European Research Council (ERC) Consolidator Grant will support Professor Wen's research using nanoparticles to unlock these secrets.

"Although the percentage of oil in our energy mix is decreasing, the amount our economies need is increasing," says Professor Wen. "We need to understand more about oil reservoirs and develop new ways of unlocking oil, and nanoparticles are one of the keys.

"In many oil fields, for each barrel of oil we currently produce, we leave just over two behind. The reality is we don't know too much about what is going on down there, and the process of recovering is expensive," explains Professor Wen. "This is porous rock under high temperature, high pressure and high salinity deep beneath the ground. Current technology is limited to trying to build up rough ideas of the underground geography by injecting tracer chemicals down and hoping to pick them up in the production wells. Most of the chemicals injected for oil recovery are absorbed by the rock rather than reaching targets to make oil flow."

Professor Wen's nanoparticles could transform technology for surveying the structure of existing reservoirs, and also provide new tools to improve the delivery of these chemicals.



Professor Dongsheng Wen

"Firstly, we can design specially functionalised nanoparticles that act as sensors, which could tell you about their journey through the reservoirs, allowing us to build up more detailed pictures of their structure.

"The second area to look at is developing nanotechnologies to package and deliver chemicals a lot more effectively. Finally, we can make nanoparticles, or produce them in the reservoir, that themselves change the properties of the oil underground and make it flow more easily."

Some of the grant will fund equipment, but the majority will pay for three post-doctoral positions and several PhD projects.

Infrastructure and sustainability

Sustainable approach to meeting the challenge of student changeover

Plans are in place to ensure that this June's student changeover is the smoothest ever and that the impact on other residents is reduced further.

The departure of students from the three local universities brings with it significant challenges each year, as large amounts of waste are generated and noise from end-of-year-parties can disturb other residents.

As part of our strategic commitment to ensure that the University and our students have a positive impact on society, Sustainability is working in collaboration with Leeds University Union (LUU), Leeds City Council and other students' unions to put in place communications and plans to minimise the disruption caused.

LUU is again delivering the Leave Leeds Tidy campaign on behalf of the partnership. This provides information and advice to students, student warden patrols, and collection of unwanted items from local communities in partnership with Emmaus. This year 10 new textile bins will make it even easier for students to donate their unwanted clothing; all funds raised will benefit the Yorkshire Air Ambulance.

In conjunction with Leave Leeds Tidy, Sustainability is running a campaign to raise awareness of the impact of noise on other residents and to encourage issues to be reported to the Universities and Colleges Neighbourhood Helpline Service. Whilst the majority of students cause no problems, this is a peak time of year for noise complaints. People affected include other students still revising for exams. The campaign combines practical weekly tips on social media with a blog on the Sustainability web pages.

"By combining the efforts of agencies, we've successfully reduced the impact of changeover year on year," says Sustainability's Amanda Jackson. "We're hoping this year will be the best campaign yet, and that residents will recognise how we're delivering on key neighbourhood challenges to benefit students and other residents alike."

For more information visit www.sustainability.leeds.ac.uk or email Sustainability@leeds.ac.uk



Many green bottles hanging on the wall

Green representatives at Oxley residences have created a vertical garden from recycled materials. Around 100 green bottles have been recycled into flower beds in planters hanging from walls at the residences.

The wall provides more vibrant green space and also improves the biodiversity of the area. Two owl boxes and bird feeders have also been installed. Oxley was the winner of the Green Residence Award at this year's Hall Exec awards.



Opportunities for students

Students make their mark at M&S

Over the past year, the M&S Partnership has offered 56 student placements across a wide variety of subjects, an increase of 60% on placements offered the previous year. As part of the Partnership's Employability theme, all placements are all closely aligned with a student's subject area and future career prospects and are also designed to meet a business need for M&S.

The partnership was founded on the relocation of the M&S Company Archive to campus in March 2012; the first time a working business archive and head office unit have been based at a University. Since then the partnership has delivered a wide range of employability activity, including placements, workshops and volunteering opportunities, to help Leeds students enhance their employability skills and support them into future work.

Kate Robinson, a second year LLB Law student, worked with the M&S legal team for two weeks in their Head Office over Christmas 2014 as part of an embedded programme offering Law students from Leeds placements with the legal team over Christmas, Easter and summer holidays. The placement offered Kate a chance to experience the pace and requirements of working for an in-house legal team within a large corporation. She supported lawyers in the commercial team by updating franchise agreements and reviewing contracts,

and shadowed professionals specialising in real estate, intellectual property, branding and advertising.

Kate says: "The team were fantastic, and really proactive in providing me with as much experience as possible. I spent a lot of time talking with different people in the team about their career paths, which helped me form a clearer picture of the direction I would like to take my own career after finishing university."

"The experience I gained at M&S was second to none. It was fantastic to see the legal work that supports such a well-known and respected household name, and to benefit from the relationship M&S has with the University."

Final-year Environment and Business undergraduate Emma Powell was an M&S Partnership and Archive ambassador for nine months in 2014/15. Emma's role consisted of promoting the M&S Company Archive and



M&S Brand Ambassador Emma Powell

opportunities as part of the partnership within the Faculty of Environment.

Emma says: "My role involved working alongside other M&S ambassadors, conducting and carrying out various projects. These included promoting events, writing a blog on our work, and encouraging staff and students to use the Archive as a resource."

"Meeting the other ambassadors was one of the highlights of the role. We all worked very well together and it made the experience thoroughly enjoyable. All these projects were extremely fun and really helped my communication, creative and organisational skills. Being an M&S Partnership and Archive ambassador has been a fantastic experience and I would recommend it to anybody at the University."

Continuing a journey of Discovery

Last September saw the launch of 10 Discovery Themes*, one of the new enhancements to the Leeds Curriculum. As this first year of discovery draws to a close, students are being advised about the different pathways they can chart through their chosen Theme(s) to personalise their learning.

Most Leeds undergraduate programmes include provision for students to take discovery modules (previously electives) as part of their degree. These modules reinforce the value and interest of our degrees by offering students the opportunity to broaden their learning and pursue their own personal interests while developing skills that

help prepare them for life after university. To help students navigate the extensive choice on offer, the modules have been organised into 10 Discovery Themes which represent the breadth of the University's teaching, from arts to sciences, and from theory to practice.

Year one students who picked their discovery modules last September have begun to think about their choices for next year and were able to attend a Discovery Themes Fair in May ahead of online enrolment for discovery modules in July. Theme Leaders and student ambassadors were on hand to offer information and advice.



Find out more at www.leedsforlife.leeds.ac.uk/Broadening

*Creating Sustainable Futures, Enterprise and Innovation, Ethics, Religion and Law, Exploring the Sciences, Languages and Intercultural Understanding, Media, Culture and Creativity, Mind and Body, Personal and Professional Development, Power and Conflict, Technology and its Impacts

Spotlight on Language and Intercultural Understanding

Over 250 discovery modules across all levels provide opportunities for students to develop practical language skills by enhancing their existing linguistic skills, learning a new language and understanding how language works. Language skills and intercultural awareness are a huge advantage for students competing in a global graduate market. There are modules that explore cultural and social diversity through art, literature and film, and others that look at history and society through the events, people and politics that have shaped our world. Students can design their own personal pathway – they're spoilt for choice!

Theme Leader Caroline Campbell

Spotlight on Media, Culture and Creativity

There are almost 300 modules with nine sub-themes to help students find their way around. Media, Culture and Creativity covers so many bases, from music, theatre, film and photography to literature, heritage, art and design. There really is something for everyone! Our student ambassador, Letizia Mattanza, has been fantastic at creating resources to help students find the right modules, including an online quiz which directs students to a particular sub-theme, based on answers to questions about their likes, dislikes and aspirations.

Theme Leader Bryan White

Opportunities for students

Celebrate Week 2015

Students and staff were thrilled to have their contributions and achievements recognised during the annual Celebrate Week events organised by Leeds University Union (LUU).

The week kicked off with the Partnership Awards, which celebrated the work of staff and students who set out to fulfil the mutual expectations set by LUU and the University.

“Once again Celebrate Week 2015 has been a great success, highlighting the tremendous work of students and staff, and showing again that Leeds University Union is the beating heart of the University,” said Vice-Chancellor Sir Alan Langlands.

“The Partnership Awards, Volunteer Celebrations, the Hall Exec Awards, our Intercultural Ambassadors, the Sports Colours, the LeedsforLife



Undergraduate Philosophy School Rep, Ella Adlard, winner of Personal Tutor Award, Dr Una Adderley and Director of Lifelong Learning Centre Tony Ellis.

Citizenship Awards and Leeds RAG, the Union's biggest fundraising society, defined a year of achievement, which I am sure is unsurpassed in any other University. Last year alone, the RAG Community Fund raised £277,018 for more than 120 charitable causes around the globe.”

LUU's Activities officer Fi Metcalfe says:

“Celebrate Week is a fantastic opportunity to recognise, thank and congratulate so many outstanding students and staff from the Union and University who work so hard to deliver a fantastic student experience.

“The week commends a fantastic partnership between LUU and the University, working together to build a wonderful community in which students can reach their potential in their academic and co-curricular activities.”

The Intercultural Ambassadors Showcase (l-r): Emily Axel (MAE Care Mind and Body Coordinator), Akila Munir (Intercultural Ambassador), Dulcie Huwew (Intercultural Ambassador), Avigail Kohn (Intercultural Ambassador), Laura Bielby (Student Opportunity and Enhancement Officer)



Intercultural Ambassadors Showcase

The Intercultural Ambassadors held a ceremony of their own during Celebrate Week.

Two Ambassadors, Akila Munir (Mozambique) and Marta Ali (Swiss/Italian),

hosted the evening, which gave students a chance to reflect on and celebrate their work in the past 12 months. The Ambassadors work together on different projects to educate and engage the global community.

“It was such a great opportunity to work on the Intercultural Ambassadors Programme and to support their project teams,” says Global Community Project Assistant Intern Jackson Kihiko, whose role involved selecting the 45 Ambassadors and running the programme. “Working on the Showcase, I gained valuable experience organising a prestigious event. And most importantly, it was great to celebrate all the Ambassadors' hard work and everything they have achieved through the programme.”

Winners of this year's Partnership Awards

Innovation Award

Dr Duncan Borman – *Civil Engineering*

Positive Impact Award (Staff)

Wilma Yingqi Wu –
Leeds University Business School

Positive Impact Award (Student)

Tina Brocklebank – *Geography*

Best Feedback Award

David Richardson – *Civil Engineering*
Steve Maw – *Lifelong Learning Centre*

Academic Rep of the Year Award

Matthew Windeatt –
Faculty of Biological Sciences

Postgraduate Teaching Award

Daniel Wolf – *Mathematics*

Supervisor Award

Dr Jiannis K Pachos –
Physics and Astronomy

Mentor Award (Staff)

Kay Morrison – *LUU*

Mentor Award (Student)

Nabeel M Alhassan –
Leeds University Business School

Inspirational Teaching Award

Professor Margaret Atack –
Languages, Cultures and Societies

Wellbeing Champion Award

Lawrence Thompson – *Philosophy, Religion and History of Science*

Outreach Award

Amy Mellor – *Geography*

Personal Tutor Award

Dr Una Adderley – *Healthcare*

Partnership Award

Professor Martin Levesley (Staff) –
Engineering

Helena Coleman (Student) – *Psychology*

Details of other award-winners, including winners of Volunteer Celebration Awards, LeedsforLife Citizenship Awards and Sports Colours, can be found at

www.leedsuniversityunion.org.uk/celebrate/

Senior Intercultural Opportunity Officer Jenna Isherwood also worked with the Ambassadors. She says: “The Showcase was a wonderful celebration of everything the Ambassadors have achieved this year. We heard them speak about their experiences, friendships they've formed and skills they developed while setting up challenging projects.

“This important programme shows how all students can benefit from being part of our Global Community here at Leeds – whether by volunteering as an Intercultural Ambassador or by participating in the intercultural events and projects they organise.”

Research and innovation

Public engagement network open to all



Raising the profile of public engagement (l-r): Alistair, Jasjit, Iona, Tracey, Rose, Alexa, Marina Crowe (Wellcome Trust ISSF related public and patient engagement coordinator), Jonathan, Charlotte (an intern in Jonathan's team), and Mike

Pepnet is a network for everyone at the University who is involved or interested in public engagement, events, patient involvement, partnership working, co-creation and pathways to impact activities.

With representation from over 17 schools, faculties and service units and a large, growing membership, Pepnet is a group for academic, support and professional staff. An open, friendly group which staff can join for regular learning and collaboration opportunities, Pepnet also coordinates seminars with expert speakers,

provides opportunities for networking and sharing best practice, and welcomes champions of engagement to join us to help shape our direction and future topics.

“Pepnet was established in 2013 as a grassroots movement to connect people and activities across the campus,” explains Dr

Alexa Ruppertsberg, co-chair of the steering group. “It provides a forum to share best practice, develop an understanding of our opportunities and challenges, progress our ability to demonstrate the importance of engagement activities, and understand their impact on the public’s thinking and actions. We aim to build a public engagement presence reaching across all services and disciplines at the University to advance our connectedness with the worldwide community.”

The Pepnet steering group’s purpose is to drive forward and support the development of an institutional engagement and involvement strategy at the University. Currently, the group has 13 members (see table) and is co-chaired by Professor Charlotte Haigh and Dr Ruppertsberg.

At the moment the group has adopted the following definition for ‘engagement’: “Engagement refers to a number of different activities between University employees and people external to the University, that are governed by respectful, interested and co-operative conduct and promote mutual benefit through information, education, entertainment, empowerment, consultation, solutions, challenges and help.”

Sign up to the Pepnet email list for news of learning and networking opportunities at lists.leeds.ac.uk/mailman/listinfo/pepnet

Steering group – members in June 2015

Professor Charlotte Haigh
Biological Sciences

Dr Alexa Ruppertsberg
Health Sciences Innovation Hub

Dr Jasjit Singh Arts

Elaine McNichol Healthcare

Dr Tracy Aze Earth and Environment

Rose Savage Educational Engagement

Dr Iona McCleery History

Dr Jon Barber Educational Engagement

Professor Sue Pavitt Dentistry

Dr Mike Finn Museum

Dr Claire Brockett
Medical and Biological Engineering

Debbie Beirne Institute of Cancer

Alistair Hay Leeds University Business School

Science and engineering books for research this summer

The Edward Boyle Library is now closed until the end of September as part of a major refurbishment. Core teaching texts and the high-demand collection will be moved to the Laidlaw Library, but the main science and engineering research collections will be held in store over the summer.

During this time you can request a book to be retrieved for you. Use Search@Library or the classic Library Catalogue to find the book details and follow the link to make a request. Retrievals will happen twice a week on Mondays and Thursdays, and you can collect your requested items from the Laidlaw Library the following day.

Please contact the Library if you have any questions, by email at library@leeds.ac.uk or online library.leeds.ac.uk/contact The Library webpage at goo.gl/NhV1MW also gives all the relevant details.



International and community

Cultural exchange weekends

Two international students recently experienced cultural exchange visits with British families. The visits were organised by the charity HOST UK in partnership with the International Student Office, enabling them to enhance and share their cultural understanding.

Yaser Al-Anii (Engineering), an Iraqi PhD student, stayed with a host in the Wirral with his wife and two children, and described his weekend visit as 'amazing'. Alongside visiting an urban farm, his children enjoyed an Easter egg hunt and also learned about historical figures such as Emmeline Pankhurst.

Yaser says: "I wanted to know more about English people and what particular traditions they have... we learned about their lifestyle and overall it was a very nice experience for us, which we will repeat. We have gained a new English friend!"

Assel Shaitulova (Arts), a language student from Kazakhstan, enjoyed her weekend in Duffield, Derbyshire, and was joined by a Spanish student studying at Manchester.



Yaser Al-Anii visiting a farm with his host and family

Assel says: "I learned a lot about British culture and talked a lot about my culture. Before my visit I thought British people were not very open but the host family showed me a different side; they were very welcoming to me".

Assel visited the National Trust mansion Kedleston Hall and attended an orchestral concert at Derby Cathedral. On her return, she didn't hesitate to recommend HOST to her housemates.

If you would like to know about visiting or becoming a HOST, please contact Tim Rhodes at the International Student Office:
t.c.rhodes@adm.leeds.ac.uk

Students' German journey to represent city at youth democracy event



Jessica Fogarty signs the Golden Book of Dortmund at Dortmund Town Hall, watched by fellow student Daisy Clough and Lord Mayor Ullrich Sierau

Six students from the University represented Leeds at an international youth event marking the end of the Second World War, the liberation of Auschwitz and the defeat of Nazism.

The first- and second-year students were in Dortmund – one of Leeds' twin cities – for a week around the 70th anniversary of VE Day. They were invited to take part in Dortmund's International Democracy Days, as part of a 60-strong group of 16- to 20-year-olds from its other twin cities in France, Russia, USA, Israel, Serbia, China and Turkey.

Dr Claudia Sternberg, from the School of Fine Art, History of Art and Cultural Studies,

accompanied the students and sought to establish links with the city as part of the University's Legacies of War First World War centenary project.

She says: "While we in Leeds have been exploring the diverse experiences and legacies of World War One, memory culture in Germany remains focused on the Holocaust and the Second World War. Dortmund's international approach to commemorating 1945 is a great opportunity to reflect together on a traumatic past and develop shared visions for our present and future."

The opportunity for the trip came via Leeds City Council.

Collaboration and enterprise

Partnering for growth: 100 success stories

Knowledge Transfer Partnerships (KTPs) are a national government initiative which encourages businesses to recruit recent graduates or postgraduates for specific projects, so they can benefit from specialist skills and expertise.

The aim is to support UK businesses wanting to improve their competitiveness and performance.

The University has been involved with the KTP programme since the late 1970s and has around 20 KTP projects running at any one time, making it one of the most prolific university participants in the scheme in the UK.

Current project partners range from large international businesses such as Asda to companies such as Leeds-based IT healthcare

software company, The Phoenix Partnership.

The University's 100th successful KTP has involved Dyson Technologies teaming up with the Centre for Technical Textiles in the School of Design.

Mark Taylor, Global Strategy and Research Director at Dyson, says: "New technology starts with research – and some of the world's best research is found in British universities. Combining the expertise of Dyson engineers with the knowledge base at Leeds will lead to new technologies that we can export from the UK."

Professor David Hogg, Pro-Vice-Chancellor for Research and Innovation, says: "Reaching the milestone of 100 KTP projects is testament to the

research strengths at Leeds.

"By having a dedicated KTP office at Leeds, we provide our staff and our commercial partners with the best fit for our academic expertise and the development of the partner's business. The transfer of knowledge makes an impact in the commercial world and reinforces the importance of collaborations between universities and businesses."

The national KTP programme is led by Innovate UK, the UK's innovation agency, and is funded by over 12 public sector bodies. Around 800 KTPs are running nationally at any one time, with projects varying in length from six months to three years.

Valuing our people

An international approach to health and safety

Students from all over the world are benefiting from a new health and safety communications campaign implemented by the St Mark's Residences' site team.

David Owen, Taylor Haworth and Mass Njie recognised that some of their international residents were unfamiliar with certain terms or health and safety processes implemented by the University. So, to give all the students a better understanding, the team created a visual display for the reception area showing 'Dos and Don'ts' that demonstrate how to stay safe.

Microwaves, toasters and kettles are just a few of the items in the display which shows students how to stay safe and operate the equipment correctly. A booklet of photos is also allocated to every flat, explaining the different health and safety procedures and equipment within the residence – such as fire doors and alarms – so international



Supporting health and safety (l-r) David Owens, Taylor Howarth and Mass Njie

students don't have to purely rely on verbal communications for information.

To ensure students understand the procedures, the team have also implemented a universally recognisable system to warn students who fail to follow health and safety procedures. Inspired by the popularity of football with the residents, a yellow card is given to students, followed by a red card if they fail to adhere to the rules.

These changes to student safety have made a big difference at St Mark's. The campaign has

been a success; students now have a better understanding of health and safety within their accommodation, resulting in fewer fire evacuations and more positive reviews from flat inspections.

As a result of their creative, educational approach to health and safety issues, the team won in two of six categories at the Vice-Chancellor's Health and Safety Awards last year: 'Supporting health and safety' and 'Beacons of good practice'.

Leeds joins new benchmarking study

The University is one of a dozen Russell Group institutions taking part in a new, four-year programme to gather benchmarking information on the efficiency and effectiveness of their administration and support services.

The data collected in the study will provide invaluable insight into how we resource the many different activities and services that underpin and support our teaching and research; and ensure we have the agility and responsiveness required to realise the ambitions set out in our Strategic Plan.

This study will be led by Cubane Consulting through their UniForum programme –

www.uniform.co – which they have developed during the past six years, working with many research intensive universities in Australia and New Zealand.

The project is sponsored by the University Executive Group and will be managed at the University by the Strategy and Planning team. Updates on the progress of programme will be available via For Staff and the *Reporter*.

PA Network Working Group – new members call

Established in 2009, the PA Network (PAN) holds a variety of events, including presentations from internal teams and services, preferred external suppliers, and informal networking sessions which give people a chance to swap news and ideas and get to know other PAs.

The PAN Working Group is looking to recruit additional members and would like to

encourage colleagues interested in helping to develop the network to get in touch at panetwork@leeds.ac.uk.

The aim of PAN is to open up opportunities for the creation and development of professional links between PAs across the institution in order to increase interaction, and share ideas and best practice. This will benefit the University and support the personal development of individual PAs.

Valuing our people

Team talk – Cleansing Services, Estates and Campus Support Services

Who's in the team?

Kevin Banks is the Cleansing Supervisor, with a team of 10 Cleaning Operatives: Andy Brown, Paul Campbell, Jenny Flynn, Graham O'Neile, Phillip Harrison, George Roe, Steve Jones, Steve Wall, Ian Bruce and Matthew Hutt. Between us we have 87 years of experience in keeping the external University environment clean and tidy!

What are the team's responsibilities?

We're responsible for all external cleaning across campus, removal of confidential waste from departments and the collection of recycling waste from bin areas across campus to designated skips. On average we collect 22 tonnes of paper, five tonnes of cardboard, seven tonnes of glass, and two tonnes of plastic each and every month.

We also look after delivery of hand towels, toilet tissue and other materials to internal cleaning cupboards across campus, driving the road

sweeper and University vans, periodic floor maintenance and responding to emergencies – which can be anything from dealing with floods to catching pigeons!

What are your strengths?

We're a really dedicated team, with members who are willing to take on any task efficiently and effectively at the drop of a hat. We have a really good knowledge of all buildings on campus, as well as the procedures for looking after them

Flexibility is vital in our role as two days are never the same. We also pride ourselves in maintaining a positive attitude and showing good customer service at all times.

What challenges do the team face in the next few months?

We've got a lot of things coming up and it's important that campus looks as good as possible. During the summer we'll be preparing for and cleaning up after the Leeds Ball, then there are open days in June and degree ceremonies in July. There are also the many

conferences that are held at the University, such as the International Medieval Congress – the biggest of its kind in Europe – and Teach First, which is coming back for the second time. There are more open days in September and October and, of course, we welcome our new students in September, too.

As well as keeping campus looking good and free from litter – which is in itself a big job – daily tasks include the removal of cigarette butts and chewing gum. One of the biggest challenges in the autumn months is the collection and removal of the leaves! We work outside in all weathers, from snow, wind and rain to glorious sunshine – we have to take the rough with the smooth.

What does the team get the most satisfaction from?

The end result, when staff, students and the general public comment on what a clean and attractive university we have, and the satisfaction of doing a good job.



The Cleansing team (l-r): Janet Willis, Paul Campbell, Steve Jones, Philip Harrison, Steve Wall, Ian Bruce, Matthew Hutt, Jenny Flynn, Andy Brown and Kevin Banks

In the news



The University celebrated its 100th **Knowledge Transfer Partnership** (KTP). KTPs are a government initiative that encourages businesses to employ graduates and postgraduates on specific projects to lend their expertise and skills. The story was covered by the *Yorkshire Post*.

Professor Stephen Coleman (School of Media and Communication), Dr Victoria Honeyman (School of Politics and International Studies) and Judith Stamper (School of Media and Communication) gave ongoing commentary about the **General Election**. As well as regular contributions to BBC Radio Leeds' broadcasts, examples of national media coverage include BBC Radio 5 live (Judith Stamper about the language used during the second TV election debate), BBC *Breakfast* on several occasions (Dr Victoria Honeyman on the parties' campaigns and election results), and BBC News and Sky News (Professor Stephen Coleman on how the televised discussion would impact voter behaviour and how the leaders should present themselves during the final TV debate).

Research led by Dr Nicola Buckland (School of Psychology) found that hungry people were more likely to choose a **healthy snack** to eat rather than an unhealthy one when offered a choice. The research was covered by *Mail Online*, *The Sunday Mail* (Brisbane) and prompted a phone-in discussion on BBC Radio London 94.9.

Professor Barry Cooper (School of Mathematics) was interviewed by *Up All Night* on BBC Radio 5 live about manuscripts belonging to **Alan Turing** that were sold at auction in New York.

Professor Virginie Pérotin (Leeds University Business School) was interviewed on BBC World Service's *Newshour* about the benefits of **workers' cooperatives** and why they are successful.

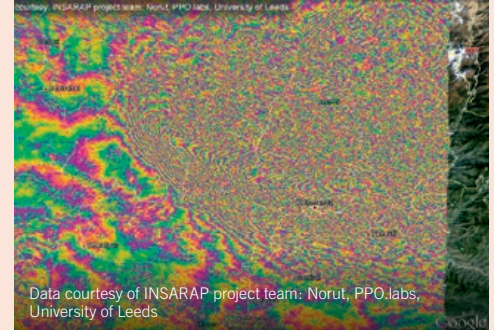
Prompted by rioting in Baltimore, Dr Paul Bagguley (School of Sociology and Social Policy) spoke to the *Washington Post* about why **looting** happens during riots.

BBC Radio 4's *The World Tonight* interviewed four students from Leeds University Union's Old Bar. The students gave their opinion of the **party leaders'** performances on BBC One's *Question Time*.

The Sunday Times looked at a number of studies into the declining population of **bees**. The article referenced a European Commission study co-authored by Professor Bill Kunin (School of Biology), which warned that Britain was one of the worst countries in Europe for a decline in bee species.



Yorkshire Cancer Research awarded Professor Philip Quirke (School of Medicine) and his team funding of £1.5m to help with their ongoing research on **bowel cancer**. *Yorkshire Post* Features Editor Sarah Freeman interviewed Professor Quirke about research successes. The story was also published in the *Yorkshire Evening Post*.



Professor Tim Wright, Director of COMET, analysed images of the **Nepal earthquake** taken from the European Space Agency's Sentinel-1A satellite. He found that the region around the capital Kathmandu had been lifted three feet during the earthquake. His comments were published by *Yahoo! News UK & Ireland*, CBS News online, the *Washington Post* and NBC News online, and he was interviewed by BBC World Service's *The Science Hour*. Dr Richard Walters (School of Earth and Environment) also commented on the satellite images and was quoted by BBC News online.

Dr Ingrid Sharp (School of Languages, Cultures and Societies) contributed to BBC Radio 4's *The Great War of Words: Peace before Annihilation?* presented by Michael Portillo. Dr Sharp spoke about the **International Women's Congress** in the Hague, which was held 100 years ago.

The BBC News website covered research led by Dr Sophie Fauset (School of Geography), which found that about 1% of tree species in the **Amazon** store half the carbon in the South American rainforest. Dr Michelle Johnson (School of Geography), who was also involved in the study, was interviewed about its findings on BBC Radio 4's *Today* programme.



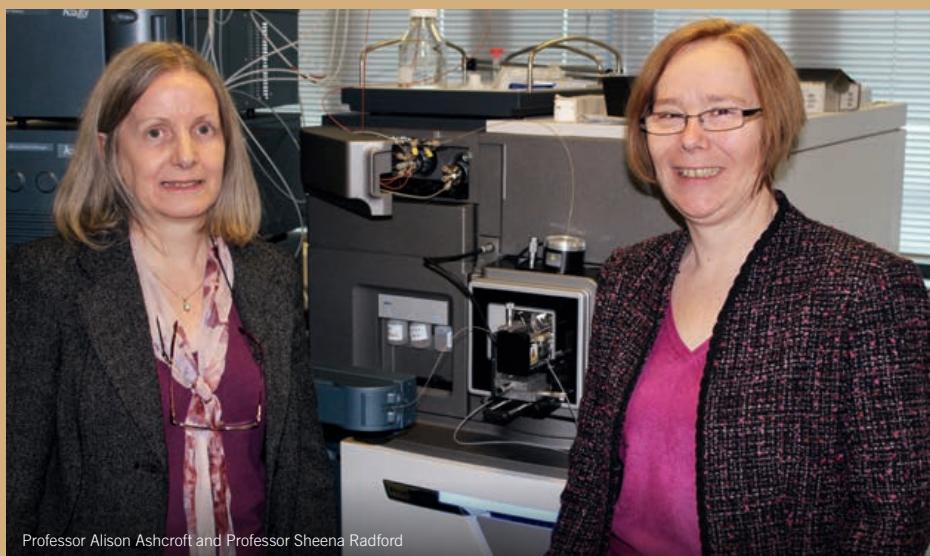
Our people/honours

Dr Dave Lewis (Biomedical Sciences) has been shortlisted by the Society of Biology for the title of HE Bioscience Teacher of the Year.

Dr Lewis seeks to develop innovative, research-led teaching which is not normally found in the curriculum yet addresses a clear demand from employers, and to provide opportunities for students to develop key employability skills. These include a level 6 module, which provides an education in in-vivo physiology and pharmacology, a suite of non-traditional final-year research projects, and the teaching of bioethics.

Dr Stella Butler, the University Librarian and Keeper of the Brotherton Collection, has been elected as Chair of Research Libraries UK (RLUK). She says: "This is a pivotal time for higher education. Our libraries face many changes and challenges, including the increasing dominance of the electronic environment, the open access agenda, the management and curation of research data, as well as the exploitation of the vast riches in our special collections. I look forward to working with board members and the RLUK executive team, whose collective experience and expertise will enable RLUK to drive, develop and shape the agenda for libraries and scholarly information in the UK."

The University's **Wellbeing, Safety and Health** team has won a Gold RoSPA health and safety award for the fourth year in a row.



Professor Alison Ashcroft and Professor Sheena Radford

A research team led by **Professors Alison Ashcroft** and **Sheena Radford** has won the Royal Society of Chemistry's Rita and John Cornforth Award.

The team, from the Astbury Centre for Structural Molecular Biology, Faculty of Biological Sciences, won the award for pioneering research on the structure of particular proteins connected to diseases including Alzheimer's, Parkinson's and type II diabetes. Professors Ashcroft and Radford look at how these proteins change from something normal to something dangerous and try to find ways to stop these changes taking place to prevent disease from taking hold.

The Rita and John Cornforth Award enables scientists working in collaborative research teams with both chemistry and the life sciences disciplines to be promoted and rewarded.

Professors Ashcroft and Radford say: "This award is a result of the dedication of our postgraduate students and postdoctoral fellows, our colleagues in Leeds, our expert collaborators from both academia and industry worldwide, and financial support from Research Councils, charities and industry. Together, we have been able to make a contribution to our understanding and modulation of disease-related protein assembly mechanisms using a multidisciplinary approach combining cutting-edge biomolecular mass spectrometry methods with a range of other biophysical techniques. As a team, we have developed new approaches to unravelling complex biochemical mechanisms in order to deliver fundamental insights into important disease processes."

Dr Andrea Utley (Biomedical Sciences) was joint winner of this year's Cutlers' Surgical Prize, one of the most prestigious annual prizes for innovation in the design or application of surgical instruments or surgical techniques. Instituted in 1981, the prize winner is chosen by specialist associations in conjunction with The Royal College of Surgeons of England. The principal object of the award is to promote innovation in the design of surgical instruments and techniques. Dr Utley, working with Dr Dan Saleh, developed the Yorkshire Micro Forcep, a specialist tool for repairing capillaries; its design reduces potential damage to the capillary wall and places less stress on the surgeon's hands.

Playwright and alumnus **Mike Bartlett** (English and Theatre Studies, 2002) won two Olivier Awards. He took the sought-after British Theatre Award for Virgin Atlantic Best New Play with *King Charles III*, his future history play about a world with the current Prince of Wales on the throne. His play *Bull*, a drama about office politics and workplace bullying, took the award for Outstanding Achievement in an Affiliate Theatre. *King Charles III* is to transfer to Broadway.

Antonia Jones has won Best Support Professional in the IT Service & Support Awards. The awards recognise and reward outstanding contributions to customer service and excellence in IT service management across the European service desk industry. The University was the only organisation to have been shortlisted in three categories; the other two categories were Best Small Service Desk and Inspirational Leader, for which the IT Service Desk and Sally Bogg were respectively nominated.



The Duke of York presenting students Hanna Maderbocus and Mark Hutson with the Young Entrepreneur Award

Spark start-up business **AODA** received a Duke of York Young Entrepreneur Award, presented by the Duke of York. Spark is the business start-up service at the University for undergraduates, postgraduates and graduates up to seven years after graduation.

News

Fellows are setting the research agenda

From water to bio-engineering to agriculture, a series of fellowships funded by a Leeds alumnus is having a major impact right across campus.

The Cheney Fellowships, supported by Peter Cheney (Bacteriology and Biochemistry 1969), allow exceptional individuals to come to the University, share their knowledge with staff and students and contribute to our research.

Junguo Liu, Professor of Hydrology and Water Resources at Beijing Forestry University in China, says the international reputation of the water@leeds research group was instrumental in him accepting a Fellowship at Leeds, where he has focused on water footprint and peatland research. Along with Leeds colleagues, Professor Liu's work on the virtual water flows embedded in international trade was published in the America's prestigious *Proceedings of the National Academy of Sciences*.

He is now establishing long-term collaborations between the two institutions, with a UK-China Centre for Water and Wetlands being set up in Beijing and plans to develop an international peatland monitoring network.

Another Cheney Fellow to join water@leeds was Dr Shunsuki Managi from Japan's Tohoku University. At Leeds he developed a database of global water reserves and usage to help better understand changing water use resulting from economic activities.

Dr Adrian Unc, from the Memorial University of Newfoundland, says Leeds' reputation for interdisciplinary research attracted him to

water@leeds. An expert in the use of algae for biofuels, Dr Unc worked with researchers from Civil Engineering, Earth and Environment, Geography and Biological Sciences, examining microbial transport and soil-water interface issues. He is now establishing collaborative research ideas, funding opportunities and a student exchange programme between Leeds and Canada.

Professor Neil Coles from the University of Western Australia, Dr Leonie Pearson from the University of Canberra, Dr Elena Lopez-Gunn from Universidad Complutense de Madrid and Dr Nikolai Friberg from NIVA Norway are the latest Cheney Fellows to join water@leeds, where the impact of the Fellowships has been wide-ranging – joint papers, workshops, new ideas for future research, fresh collaborations, funding proposals and partnerships which will continue long into the future.

Other areas of Leeds research are also feeling the benefit of this support. Professor Jeremy Gilbert of Syracuse University, an expert in bio-corrosion, is working with our mechanical and biological engineers to study the corrosion of biomaterials and implants in the body. The group's work will help guide the future choice of biomaterials and surgical procedures and the design of implants to improve their reliability and durability.

Professor Paul Hughes from the University of Adelaide has joined Professor Helen Miller



Peter Cheney with Professor Junguo Liu

in examining key factors in female pigs' reproductive development. Many sows only breed once – with impacts both on food production and animal welfare. Their work will examine how improved animal nutrition, both for the sows and their young, can encourage greater fertility and improve productivity.

Recruitment is now under way for Fellows to work in the arts, medicine and structural biology.

Professor David Hogg, Pro-Vice-Chancellor for Research and Innovation, explains the value of this support: "Cheney Fellowships are bringing world-class researchers to Leeds and developing our international partnerships and worldwide reputation. Their University-wide reach is opening up some great collaborative opportunities.

"I am really looking forward to meeting the next wave of Cheney Fellows."

Small ads

Professional services

ELECTRICIAN AND TEST ENGINEER for PAT testing, Periodic installation inspection and testing, installation repairs. City and Guilds qualified, fully insured. Fair pricing for a professional service.

Richard 0777 249 9414
good_connections@btinternet.com
www.goodconnectionselectrician.co.uk

COSMETIC BREAST SURGERY

Breast Reduction, Augmentation and Gynaecomastia Surgery. Consultant Specialist Breast Surgeon: Leeds Nuffield Hospital.

Philip Turton, www.cosmeticbreastsurgeon.co.uk
lisa.harris@nuffieldhealth.com

Flat for Sale

NORTH LEEDS FLAT for sale – very spacious one bedroom second floor flat, Ashleigh Road LS16. Ideal for professional person, one of three in a converted house in this quiet area. £110,500, no chain.

Sarah Rowell 0771 205 1002
sarah@srowell.co.uk

House/flat/room to let

COTTAGE IN A PARK

Charming newly refurbished two bedroom cottage with wood burning stove in delightful parkland with easy access to the University for rent £800pcm. Call for appointment.

Gillian Tober 0793 030 0998
gilliantober@yahoo.co.uk

HOUSE TO LET

House to let mid-July – Sept 1, Chapel Allerton. Sleeps maximum of 7. £90pp/week.

L. Kennaway +44 781 387 1797
info@primavistamusic.com

SUNNY TWO BED FLAT in LS6 for rent. five mins to campus, parking, amenities close by. Professionals or postgraduates pref. £625 per month + bond. Available Immediately.

n.r.tickhill@leeds.ac.uk

FLAT FOR RENT

Two bedroom back to back terrace house in Chapel Allerton for rent from 1/9/15 to 31/7/16. A large basement dining kitchen, modern bathroom, front patio facing south. Furnished/unfurnished. Suitable for two people or a small family.

0113 266 0558

Events

Exhibition uncovers exquisite Indian embroidery

Until 9 July*, ULITA, adjacent to Leeds University Business School

A new exhibition at ULITA – *Indian Embroidery* – will give visitors a chance to marvel at intricate workmanship and varied artefacts.



The exhibition focuses for the first time exclusively on its Indian Collection – one of its major and particularly colourful world collections. The exhibition illustrates the variety and quality of workmanship found in Indian embroidery and explores the techniques of whitework, quilting, counted stitch, chain stitch, mirror work, metal thread work and appliqué. Visitors will also see a range of artefacts on which embroidery is found, from puppets to slippers, hats to tent covers.

ULITA is the University's archive of international textiles and is open on Tuesdays, Wednesdays and Thursdays, 9.30-4.30pm, and on Fridays and during the summer holidays by appointment. For details visit ulita.leeds.ac.uk or call 0113 343 3919.

*The exhibition will reopen in October.



Images show Kalamkari cloth, mid-late 20th century. Credit: ULITA, University of Leeds

Magnified and Sanctified – The Music of Jewish Prayer

Tuesday 16 – Friday 19 June, University of Leeds

For the first time in Britain an international academic conference is being devoted to the music of Jewish prayer. Internationally acclaimed scholars in Jewish liturgical music will lead the programme which is presented jointly by the University's School of Music and the Academic Wing of the European Cantors Association.

All are welcome to two public events:

- An illustrated lecture by Professor Eliyahu Schleifer: *The Music of Jewish Prayer: Unearthing Layers of Liturgical Chant and Song* on Tuesday 16 June at 8-9.30pm in the Concert Hall
- Concert: *One Little Goat: new discoveries in Jewish choral music*, performed by the Clothworkers Consort of Leeds and conducted by Bryan White, on Wednesday 17 June at 8-9.30pm in the Concert Hall.

More information can be found at goo.gl/ZrbtTO

Pressed for time: The acceleration of life in digital capitalism

Tuesday 7 July 4–6.30pm, Yorkshire Bank Lecture Theatre, Leeds University Business School

Judy Wajcman, Professor of Sociology at the London School of Economics and Political Science, will give a presentation based on her new book, *Pressed for Time: The acceleration of life in digital capitalism* (University of Chicago Press, 2015).

There is a current perception that time is scarce and that the pace of everyday life is accelerating beyond our control. The iconic image that abounds is that of the frenetic, technologically tethered, iPhone-addicted citizen. So what is the relationship between technology and time? Does technological acceleration inexorably hasten the pace of work and everyday life? This talk presents a sociological understanding of the paradoxes of time in a digital age.

Visit goo.gl/ysgb33 to book.

Inequalities Research Collaboration Workshop

Thursday 18 June – 1-3pm, Business School, Maurice Keyworth SR (G.31)

Inequalities research at the University covers diverse population groups and areas of lived experience, including ethnicity/religion, gender, learning disabilities, age and poverty.

Leeds Social Sciences Institute (LSSI) is hosting a cross-faculty workshop to identify and create a virtual network of University researchers working in this field to support learning and collaboration. It's anticipated there will be value in developing a critical mass of interdisciplinary researchers for whom the network will be a resource for clarifying concepts, developing methods and collaborating on proposals and publications.

The programme includes an examination of the funding landscape (including research councils' strategic priorities and funded research), presentations on inequalities research from Dr Ghazala Mir, Professor Sarah Irwin and Dr Nick Emmel, and opportunities for wider discussions.

Attendance is free, but due to limited space, please register online at goo.gl/OKswR2 by Tuesday 16 June. You will be asked to provide details of your interest and expertise in inequalities that will be circulated to attendees in advance of the workshop.

New items on show at the Marks In Time exhibition

M&S Archive, Western Campus

The Marks In Time exhibition at the M&S Archive on campus has been updated and features exciting new exhibits on areas such as International brand marketing. A new interactive app allows visitors to create their own collections of favourite archive items and share them via social media.

The Archive has recently been recognised by the Visit England Quality Accreditation Scheme for its visitor experience and has more changes planned over the coming weeks so it's a great time to pay a visit. More details can be found at www.marksintime.marksandspencer.com/home

M&S has also worked with Leeds Museums on a new *Age of Glamour* exhibition that has just launched at Lotherton Hall. See some fabulous fashions on display in this exhibition, which focuses on the impact of Parisian design on British fashion during the fifties. Details can be found at goo.gl/auQ7eR

Ian Wheeler Trial Management Assistant, Clinical Trials Research Unit

What does your role involve?

We gather a huge amount of medical data from hospitals throughout the country and we compile and analyse this information so that in the future there can be new and successful ways of treating people. I circulate relevant documentation to the hospitals, as well as dealing with queries, organising meetings, taking minutes and maintaining records and filing systems.

What do you enjoy most about working in the Clinical Trials Research Unit?

It is a genuinely supportive group of people with a common aim and the work we do does, ultimately, improve the quality of people's lives. Sometimes it's easy to feel like a very small cog in a very large machine but we all do something important which, when you add it all together, can have a very real impact on medical research in the UK and worldwide. There are some real characters at the unit and social get-togethers can be a lot of fun.

How did you come to work at Leeds?

I did the MA in Art Gallery and Museum Studies in 2003/04. It was, and is, very difficult to get a job in museums, but I loved being on the campus and wondered what job opportunities there might be here. I initially started in the Trials Unit as a data entry clerk on a six-month contract in 2009 and I'm pleased to say I'm still here!

You're a big Doctor Who fan. Could you tell us more?

When I was at school, every kid loved *Doctor Who* and *Star Wars* – they were the *Harry Potter* of their day. *Doctor Who* tends to inspire creativity, so I started contributing to fanzines about the programme and joined the Doctor Who Appreciation Society which I was later involved in running. This led to helping out at conventions and all sorts of other interesting things, such as assisting TV researchers on



programmes like *Room 101*, appearing on UK Gold and being interviewed by the *Yorkshire Post* and local radio. I was even asked by the *Liverpool Echo* to comment on whether Ken Dodd would make a good Doctor Who! There's an active Who group in Leeds – one of their former members, Phil Collinson, went on to produce the show.

And you've written a book – *What's All the Fuss About...? An Introduction to Doctor Who. What's inside?*

The publisher wanted to do a book which would help introduce people to *Doctor Who* – viewers who are maybe interested in the new series but would like to know more about the programme's past. We've suggested key episodes that people might like to watch to familiarise themselves with the show and given them a flavour of each of the Doctor's eras. That said, there are also loads of facts in there to satisfy the more diehard fans, so I hope there's something for everyone!

So who's your favourite Doctor and why?

For any child growing up in the late 1970s, Tom Baker ruled supreme. I think he is the consummate Doctor and in real life he's a true eccentric and a formidable character. I was lucky enough to interview him a few years ago – pretty scary to meet one of my heroes but he was on good form and we got on well. I also like Sylvester McCoy who I think is underrated and did not have the same chance as some of his predecessors as the programme was sadly in decline when he appeared in it. The new Doctors are all great as well – Peter Capaldi is a return to the older, more traditional type of Doctor and I think he's hit the ground running. Exciting times!

What's your most frequently asked question?

We work to quite strict deadlines and need to work closely as a team, so 'Have you got any spare capacity?' is a bit of a catchphrase in the Trials Unit. 'Does anyone fancy a beer after work?' is probably my favourite though!