



Reporter

Issue 574
May 2013

Medieval moves

The International Medieval Congress makes its main campus debut in July.

Page 3

Understanding flash flooding

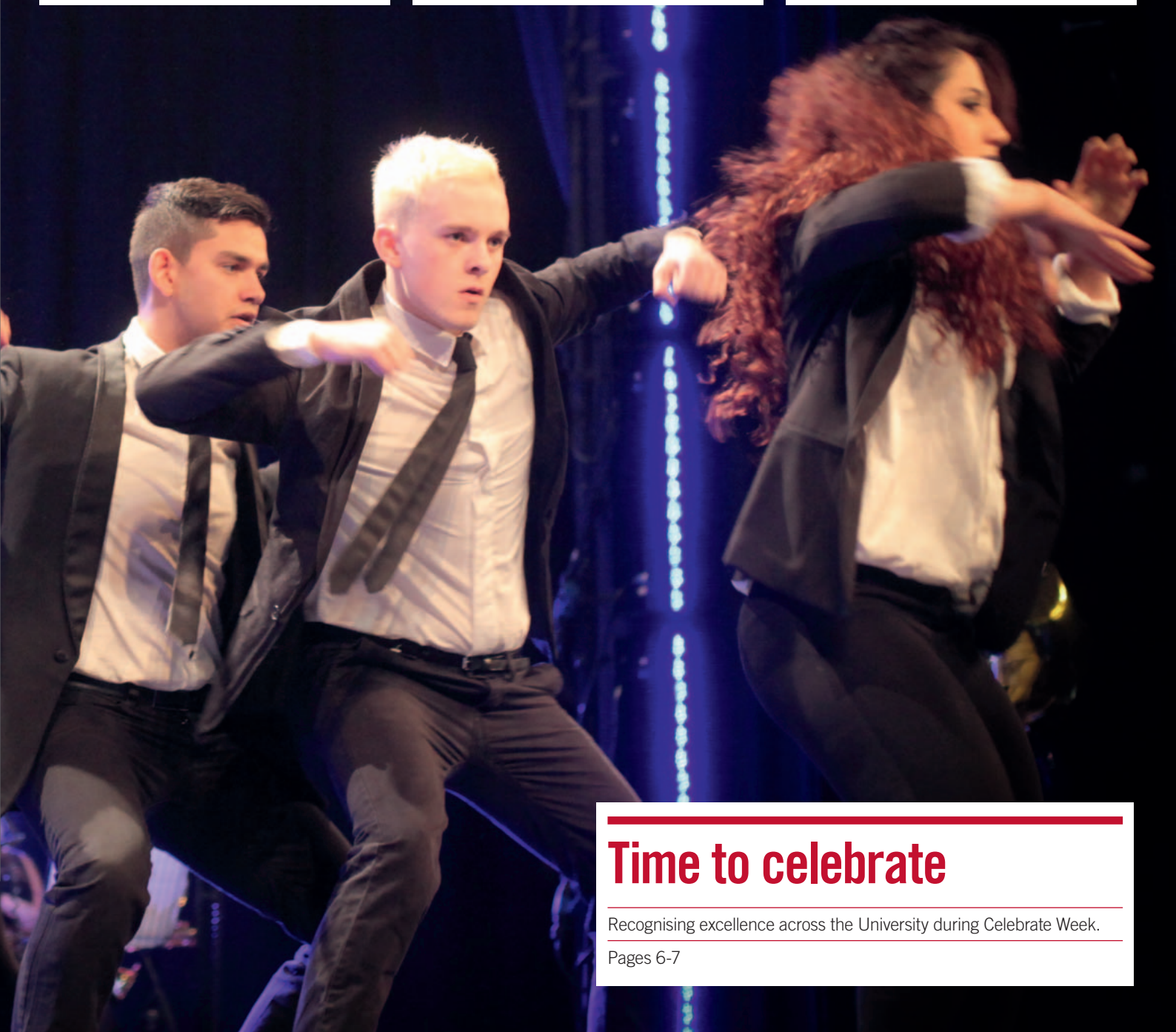
A team from the University is scanning the skies to discover how destructive rain clouds grow.

Page 8

10,000 and counting

Donations from our alumni reach the 10,000 mark.

Page 14



Time to celebrate

Recognising excellence across the University during Celebrate Week.

Pages 6-7

Leader column

Staying on track to achieve our strategic ambitions

Against a background of changing student recruitment patterns, increased competition and financial pressure, it's all too easy to forget what a special place the University of Leeds is. I've been told that being given 8 out of 10 in Yorkshire actually equates to getting a 10 elsewhere in the country. My view is simple – we should be proud and give ourselves a 10, because we deserve it. Look at the levels of research income, the quality of our student education and student experience and the innovations we've made. Our University is making a huge difference to the city, the region, the country and the world in which we live, and we should recognise and celebrate that more often.

The achievements of our staff, students and partners weren't in any doubt during this year's Celebrate Week. Organised by Leeds University Union (LUU) and the University, the true joy that people showed when their hard work was recognised by their peers, students or fellow students, was fantastic and quite emotional. I could see people fighting back tears. I was privileged to attend four of the seven award ceremonies, including the Sports Colours which celebrated our students' sporting successes. There's something about excellent achievement in sport and excellent academic achievement that is synergistic. I'm very proud that we've got such wide participation in the country's university sporting activities and competitions, not to mention some exceptionally talented individual sports men and women amongst our students. Congratulations also to our sports coaches, who are a highly talented and dedicated team.

The other events at which I was a guest – the Partnership awards, the LeedsforLife Awards and LUU societies' event, The Riley's – served to underline the inspiring and varied nature of our University and its staff and students. I was honoured to be presented with a lifetime achievement award at The Riley's, recognition that I will treasure for the rest of my life. Thank you to LUU and to all our students – I was deeply moved by the award.

Our view of what this year's student recruitment – and therefore next year's funding – is going to look like, is getting clearer. Last year, for a variety of reasons, found us down on student numbers. Since then colleagues have put a massive amount of work into the recruitment process, particularly conversion activity. The outlook is a little bit better this year and we are cautiously optimistic, but student numbers are unlikely to recover completely and we will therefore continue to face financial pressure.

We are all aware of the big, externally-driven changes that have occurred in the last 12 months and the enormous impact they have had – and are still having – on the higher education (HE) sector. We're competing in a fierce marketplace for the very best students. Added to which, despite an inherent distrust of the methodology of some league tables, we are increasingly conscious that league table position is influencing student choice.

Together with senior colleagues, I've been taking stock of everything that's been going on, as well as the outcomes of the strategy discussions in Council, with the leaders of the University and in the open meetings held last year. What's very clear is that everybody wants to maintain the strategic ambition of being a leading, world-class university, integrating our research scholarship and education and continuing to aim towards the top 50 universities in the world, even though we all acknowledge that is a significant stretch target. What has become increasingly obvious, however, is that some change within the University is necessary to adjust ourselves to the new HE environment. Specifically, we need to ensure that, as the market takes root, we can continue to attract high-quality students to Leeds, and that we are sufficiently agile as an institution to be able to cope with the volatility that is inherent in the new environment. If we get all of this right, we can keep our long-term goals in mind and stay on track with our strategy.

For Schools, this means two things in particular, I think. First, they need to keep the emphasis on quality. This is the prerequisite, as one Head of School observed sagely in the last Senate, for creating the virtuous spiral that will enable us, in the new environment, to sustain excellence in research and student education, and at the same time ensure that the University remains a satisfying - and tolerable - community in which to work. The alternative, the vicious spiral of descent, is too grim to contemplate - but it is the risk if we take our eye off quality. To be blunt, if we don't actively strive to secure genuinely world-class standing, it will be difficult in this fast-changing environment to avoid sinking down the tables, making it still more difficult to recruit good students – and staff – and hence even more difficult to sustain our income streams. There are some interesting questions here, for example about the relationship between quality and quantity in student recruitment and about appropriate student-staff ratios.

The second consequence for Schools – and I make no apology for saying this – is that they need to become appropriately responsive to



the market. Different Schools will need different strategies to secure their sustainability, but all of them need to think creatively about curriculum development, and of ways of opening up and exploiting new income streams. For example, I doubt that we are currently doing enough to open up the market for international undergraduates.

Schools are addressing these kinds of question through the academic Integrated Planning Exercise (IPE). We have seen some significant thinking and innovation, and I have no doubt that this kind of planning will help us get in better shape, with more Schools in the position where they are excellent at both research and teaching and can attract very high-quality students.

In parallel, we have started to explore options, with external support, of how we might best configure and deliver the services that we need to support our new academic mission in this highly competitive environment. The quality of our services remains critical to our future, and we need to ensure not only that they are as efficient and effective as possible – that hardly needs saying – but also that they are agile, that we have flexibility across services in a way that perhaps we've not had before. This work, which will be completed by the autumn, is being overseen by the whole of VCEG, with the intention that Sir Alan Langlands, the new Vice-Chancellor, and the senior team can consider a range of options at the beginning of the next academic year, with implementation through next session. We'll be open and honest with everyone as we work through this process and will try to move to a settled position as quickly as we can.

The University of Leeds is an incredibly intellectually vibrant organisation. Once it accepts the need for change, it gets on with it and it does it extremely well. I'm absolutely convinced the University can find its way through the challenges we are facing and come out at the end with our strategy and ambition intact, more than ready to give ourselves 10 out of 10!

News

Medieval Congress makes the move



Axel Müller (centre) and members of the IMC team.

Following years of planning, the annual International Medieval Congress (IMC) finally moves to the main campus at the University. From 1 to 4 July, more than 1,800 medievalists from all over the world will descend on campus to discuss the latest findings and trends in the study of the European Middle Ages (c300-1500).

An exciting public events programme will also take place, so everyone has a chance to get involved. Listen to medieval music, peruse the various fairs and displays, and witness demonstrations of medieval crafts and food! Advanced booking is recommended for

concerts and lectures, but tickets are usually available on the door. For further information, including ticket availability, or to purchase tickets online, please visit www.leeds.ac.uk/ims/imc/publicevents

Congress Director Axel Müller says: "It's a wonderful opportunity to show the University how amazingly diverse IMC is. We'll have something for everybody with our free Making Leeds Medieval events on Thursday 4 July and at the bookfairs and special lectures. I'm sure that many colleagues will be keen to take this opportunity to come along and join in."

The Congress is organised by staff of the Institute for Medieval Studies.

For further information, please contact IMC at imc@leeds.ac.uk or **0113 343 3614**.

Contents

Valuing our people

Page 4

Inspire our students

Page 6

Research and innovation

Page 8

International

Page 10

Sustainability

Page 11

In the news

Page 12

Our people/honours

Page 13

News/small ads

Page 14

Events

Page 15

FAQs

Page 16

News

University rises in rankings

Our rankings have improved in ten subject areas in the third edition of the *QS World University Rankings by Subject*.

Accompanying Geography – now ranked at 19th in the world – in moving up in this particular survey are: English Language and Literature, Modern Languages, Earth and Marine Sciences, Materials Science,

Mathematics, Communication and Media Studies, Education, Law, and Statistics and Operational Research.

The survey evaluated 1,858 universities and ranked 678 institutions in total.

In even more good news for the University, we moved up two places from 34th position to 32nd in *The Complete University Guide*.

About the Reporter

The *Reporter* is the University of Leeds' staff magazine, produced eight times a year. More than 8,500 copies are distributed to our staff and stakeholders. The *Reporter* is produced by the Communications Team.

If you have an idea for a story, have any comments about this edition or would like to voice your opinion about University matters, please get in touch:

Email: the.reporter@leeds.ac.uk

Tel: (0113) 343 6699

Web: <http://reporter.leeds.ac.uk>

Front cover shows students from the Freestyle Society and Dance Exposé performing at the Riley's during Celebrate Week. Photo by Ollie Jenkins.

Valuing our people

Team talk – Marketing Delivery Team



The team (l-r): Amanda Snowdon, Miranda Walters, Amy Cawley and Poppy Brennan.

What does the team do?

Our first response to this was, “What don’t we do?!” While the undergraduate open days are our headline event, we run a number of events and promotional campaigns throughout the year to support the recruitment of high-quality students. These include the joint honours post-application visit days, weekly campus tours, student welcome committees, applicant telephone calling campaigns, developing a schools’ campaign in conjunction with Access and Community Engagement, and recruiting, training and managing 150 student ambassadors. Add to this the University’s undergraduate open days in June, September and October, the postgraduate open days in February and November, and attending UK postgraduate recruitment fairs throughout the year, it means fitting in annual leave can be tricky!

Who’s in the team and what are their roles?

There are five of us in the team: Miranda Booth (Marketing Manager), Amanda Snowdon and Poppy Brennan (Marketing Officers) and Laura Bowes (PA/Marketing Assistant). We also have a student intern – Amy Cawley – who is on industrial placement with us, taking a year out from her BA in Management. We work very closely (and share an office) with our colleagues in the Market Insight Team. In addition, we have 30 permanent student ambassadors who work for us throughout the year on events such as campus tours.

What events are you currently planning?

The undergraduate open days on 18, 21 and 22 June are the next big events for us. These take a huge amount of planning and attract over 10,000 visitors to campus each day, including potential applicants, their parents and school groups. We work very closely with colleagues across the University and in LUU to put together an exciting open day programme of talks, taster lectures, tours and demonstrations – over 400 activities in total!

Tell us about some of the team’s most successful activities.

Our open days are obviously something we are very proud of, not only seeing so many prospective students and their parents on campus, but also our own students who work at the events as student ambassadors and the pride they have in their University.

What are the most challenging things about being part of the team?

We’d have to say that one of the most challenging things is also one of the best. As we are involved with events and campaigns across the whole campus, we liaise with pretty much every faculty, school, department, support service and team in the University. It can sometimes be tricky trying to coordinate so many different areas, each with their own priorities, but it does mean that we work with a huge variety of people. It’s hard to walk across campus without bumping into someone we know.

And the most rewarding?

It’s really rewarding when you recognise students on campus who you remember talking to at an open event or taking on a campus tour. Several of our student ambassadors say they remember meeting us when they were applying to Leeds themselves. Following their journey, from visiting the University to becoming a student here, is really gratifying, especially knowing that the work we do plays an important part in their decision making.

Tell us something about your work that would surprise people.

Over the course of the year, we welcome over 56,000 visitors to the University. That’s roughly the population of Greenland!

Valuing our people

Spring into summer with the Lifelong Learning Centre

Details of the Lifelong Learning Centre's third Spring into Summer programme are now available, offering a stimulating programme of courses for staff and others who wish to widen their interests, develop their creativity or increase their cultural knowledge.

Courses on, for example, creative writing, art, film, religion and music are aimed at adults of any age with an interest in the subject areas. Starting during the week beginning 3 June, each course will run on campus for two hours a week in the evening for six weeks.

Two free information sessions are also planned for those interested in studying at university who want to find out more about fees, loans, entry requirements and studying as a mature student.

Full details of the programme can be found at <http://goo.gl/50IIZ>



Valuing our people

£8.5m refurbishment for the Social Sciences building



As part of the University's commitment to delivering inspirational learning and teaching, an £8.5m investment will see the Social Sciences building undergo a refurbishment between this summer and December 2014.

Following a consultation with staff and students, the refurbishments are designed to achieve a world-class learning and teaching environment, with excellent facilities and a real sense of community.

Professor Kevin Theakston, Head of Politics and International Studies (POLIS), says: "The refurbishment of the Social Sciences building is a very exciting project and a massive investment by the University in the future of the social sciences at Leeds. It will give POLIS modern accommodation that matches our ambition to provide an outstanding student experience alongside world-leading research, scholarship and impact."

Professor Mark Priestley, Head of Sociology and Social Policy, adds: "Inspired by our core values, the building will not only create a more productive place for us all to work and study in but also one that is more environmentally sustainable, more inclusive and accessible for disabled students, and with greater opportunities for personal contact between our students and staff."

During the refurbishment period, POLIS will be located in Botany House, 30/32 Hyde Terrace and 17 Springfield Mount, and the School of Sociology and Social Policy will be based in the Worsley Building.

To find out more about the refurbishments, visit www.polis.leeds.ac.uk/about/move and www.sociology.leeds.ac.uk/about/move

Staff Assistance Fund – a reminder

The Staff Assistance Fund is available to support University employees facing short-term financial difficulties, where it has not been possible to find funding from other recognised reputable sources such as a bank or building society loan.

The fund is intended to help people manage a short-term cash flow problem. It is not designed to help staff facing long-term financial problems.

Staff can apply for a one-off grant or a short-term interest free loan, usually of no more than £2,000, which will be made available at the discretion of a panel.

The financial need must arise from an unexpected situation: for example, to help

with travel costs to visit a sick relative or urgent repair of a broken boiler, where immediate funds are not available to cover the cost.

Applications to the fund are made through one single contact point and forwarded anonymously to the panel, which comprises representatives from the University and campus trade unions.

Cases are judged on individual merit, taking into account the urgency and severity of the need, an individual's household income and whether other forms of assistance are available.

For more information, please email staffemergencyfund@leeds.ac.uk or phone **0113 343 4138**.

Inspire our students

Celebrating our students and staff



Anna Dabrowska and Steven Marcelino take to the stage during the Riley's.



The achievements of the University's students, staff, societies, student representatives and partners were showcased during this year's Celebrate Week, with seven unique award ceremonies spread over five days.



LUU Community Officer Ben Fisher during Celebrate Week.

Celebrate Week acknowledges and rewards individual and group successes and reinforces the partnership between Leeds University Union (LUU) and the University, sharing the very best of what staff and students have achieved during the past 12 months.

Professor Vivien Jones, Pro-Vice-Chancellor for Student Education, says: "Celebrate Week is one of the busiest and best weeks of my year. Nothing demonstrates quite so eloquently how fantastic our students are at seizing the opportunities that a Leeds education offers them. The celebrations are both humbling and uplifting and certainly remind me why I do this job and why I enjoy my role so much."

Antony Haddley, LUU's Union Affairs Officer adds: "It's amazing to see both students and staff rewarded for their contributions to

the University of Leeds student experience. In the past week we have seen well over 100 people rewarded in the areas of sport and performance, culture, volunteering and community."

The seven key events during Celebrate Week:

- Partnership awards
- Rag Community Fund
- The Riley's awards
- Sports Colours awards
- Intercultural Ambassadors Showcase
- Citizenship awards
- Hall Exec awards

Inspire our students



Professor Vivien Jones (back left) and Vice-Chancellor Michael Arther (back right) with the winners of the LeedsforLife awards.



Celebrating the Partnership awards.



The Vice-Chancellor attended many of the Celebrate Week events.

Congratulations to the following members of staff recognised at the Partnership awards:

Innovation award

Neil Morris

Support award

Anne-Marie Rooney

Best Feedback award

Mikel Burley

Mentor award

Su Maynard

Inspirational Teaching award

Maria Do Mar Pereira

Extra Mile award

Jean Mitchell

Outreach award

Susan Deuchars

Personal Tutor award

Ian Wood
Rachael Dobson
Stuart Warriner
Larissa Bdzola

Partnership award

Mel Prideaux

Celebrate Week saw 30 charitable organisations and groups awarded sums of money from the Rag Community Fund, which will contribute towards new equipment and projects.

Inspire our students

Think at Leeds launches

A new joint initiative, Think at Leeds, created by LUU and the University, aims to bring inspiring ideas from a wide range of subject areas to a variety of people across the campus and beyond.

Staff, students and members of the community attended two inaugural events and their feedback is influencing how Think at Leeds will develop in the future. The subjects of the lectures were very different – one was an analysis of the Eurovision Song Contest while the other explored the effect of austerity on the economy.

Chris Warrington, who had a hand in developing the project, says: “The aim is to allow people to experience some of the best lecturers from across the University and perhaps consider subjects they wouldn’t normally think about.

“Working with LUU on developing the Think at Leeds events gave us the opportunity to consider creatively the breadth of the University’s academic disciplines. I look forward to seeing what’s planned for future Think at Leeds events.”



Research and innovation

Understanding flash flooding



Flash floods, like the one at Boscastle in Devon in 2005, can cause widespread damage and disruption.



A mobile radar operated by a team from the University will be used to scan rain clouds in Devon and Cornwall this summer as part of an international project that aims to understand further how potentially destructive clouds form and grow.

“Flash flooding due to heavy convective showers can cause incredible damage to property and even loss of lives,” says Professor Alan Blyth of Leeds’ School of Earth and Environment (SEE) and Director of Weather Research in the National Centre for Atmospheric Science (NCAS). “The showers can occur very quickly, so providing good warning is difficult. However, previous projects led by NCAS scientists at the University have led to significant progress in understanding how these convective storms form, and forecasts of the timing and location have greatly improved as a result.

“However, it is still very challenging for models to correctly predict the ‘amount’ of rain that will fall and the main goal of this project – Convective Precipitation Experiment (COPE) – is to study the formation and growth of the precipitation. By better understanding the processes that control rainfall intensity, we can improve the way these processes are represented in our forecast models and improve the forecasts.”

The international project is being led by scientists from NCAS, the University and the Met Office. Academics from the universities of Reading and Manchester in the UK and Purdue and Wyoming in the USA are also participating.

“It’s the first time that this type of field campaign has taken place in the UK,” continues Professor Blyth. “The new NCAS mobile radar based at the University and operated by NCAS and SEE’s Dr Lindsay Bennett will be a key instrument in the project, as it scans clouds continuously, from when they first appear to the later stages when there is heavy rain.”



Dr Lindsay Bennett alongside the mobile radar which will be used during this summer’s project.

Three research aircraft will also fly through the clouds and the surrounding environment to gather information about cloud particles in the developing stages. The two cloud-penetrating aircraft are the FAAM BAe 146 operated by the Met Office and NCAS, and the University of Wyoming’s King Air. In addition, the Met Office’s Cessna aircraft will be used to sample the environment below the clouds. A Doppler Lidar and micro-rain radar and radiometer will be operated on the ground by NCAS and SEE’s Dr Barbara Brooks and James Groves. Measurements of aerosols and air motions in the boundary layer will be made by NCAS scientists at the University of Manchester.

Research and innovation

Nordic art

An exhibition conceived by Professor David Jackson (Fine Art and History of Art) is paving the way in developing new perspectives on the under-researched and under-appreciated area of Nordic nations' contribution to the visual arts.

Nordic Art: The Modern Breakthrough, 1860-1920, on display in Munich's Kunsthalle of the Hypo-cultural Foundation, shows 125 paintings from the five Nordic countries – Denmark, Finland, Iceland, Norway, and Sweden – created during the transition to Modernism.

The exhibition has received considerable praise for bringing hitherto unknown artists to public attention, with one journalist describing it as “the exhibition to visit if you want to know more about Scandinavian art”.

Professor Jackson said of the exhibition: “The research and exhibition sought to lay the foundation for interrogating the largely Francophile view of art history that has dominated canonical studies, as well as developing new perspectives in considering the contribution of Nordic nations to a modern and progressive sensibility within the visual arts.”

He continues: “The visitor numbers, which were exceptional at over 120,000, as well as the significant press and media attention, were deeply gratifying. But more fundamentally it proved a public thirst, interest and inquisitiveness for something new and different. This is just the latest of many similar high-profile exhibitions, which have put Leeds at the forefront of new perspectives opening up in the fields of Nordic and Russian art historical research.”

For more information about the exhibition, visit <http://goo.gl/Ea9fn>



Nightfall by Nils Kreuger.



Evening by Harriet Backer.

Research and innovation

Re-imagining David Bowie

David Bowie announced the release of *The Next Day*, his 24th album, in January to the surprise of many who thought he'd thrown in the musical towel for good. Since then, the world seems to have gone Bowie mad: documentaries, magazine covers, TV programmes, rumours of live appearances and the *David Bowie Is...* exhibition at London's V&A.

Dr Denis Flannery (School of English) is delighted with this return, having spent the past few years working on an article focusing on the major re-imagining of David Bowie's music and presence by Dutch Theatre Company, Toneelgroep, based in Amsterdam.

Since 2008 the group have performed Tony Kushner's award-winning plays *Angels in America*, which explore sexuality and politics in the earlier years of the AIDS epidemic in New York, with a particular twist: every note



of music and every recorded sound is by David Bowie.

Dr Flannery has given a number of talks and seminars on this work, which draws on repeated viewings of the show and interviews with director Ivo van Hove and other members of Toneelgroep. “This production brought together two elements, David Bowie's music and Kushner's plays, in a way that that highlights the radical emotional and sexual energies of the former and gives fresh justice

to the sombre beauties of the latter,” he says. An article based on this work will be published in 2014 and is the first part of a larger project on Toneelgroep.

Leeds' own Bowie-related event – an exhibition of photographs of the singer and his world by the Yorkshire-born photographer Brian Duffy – opened this month at the city's Whitecloth Gallery and runs until July 14.

International

Images of Asia



Moonlight by Carlijn Popelier.



Cormorant fisherman by Jacob James.



The winning photograph Sulphur Miners by Alasdair Glen.

Students of East Asian Studies have celebrated another successful year of Eye on Asia, submitting almost 150 entries to the competition.

The charity photographic competition has been run annually by the department for the past 20 years. It gives students the chance to share what they have seen through the lens during their time spent in East Asian societies and cultures.

The winning photograph was captured by International Business student Alasdair Glen and titled 'Sulphur miners'. His photograph highlights the dangerous work of miners as they descend into the Ijen Volcano crater in Java, Indonesia.

Second prize was taken by first-year Medical Microbiology student Jacob James for his photograph of cormorant fisherman, with third prize going to Carlijn Popelier, a second-year student in the Institute of Communications Studies, for her photograph 'Moonlight'.

All shortlisted photographs can be viewed at www.flickr.com/photos/eyeonasia2013

International

Link to Leeds – giving international offer holders the opportunity to contact current students

The Link to Leeds project (L2L) is designed to increase numbers of international offer holders becoming registered University of Leeds students. Now available for students aiming to come to Leeds later this year, L2L enables international students to contact students currently studying at the University.

L2L ambassadors from a range of countries, programmes and levels of study are available to answer questions such as: What's Leeds like as a city? Will it be easy to make friends? What extracurricular activities are available? Offer holders can contact the ambassadors

by email, skype and instant messaging or take part in live chat events.

To learn more about Link to Leeds, visit <http://goo.gl/jLUkW> or email internationaloffice@leeds.ac.uk



"Being an ambassador is a wonderful experience because I really feel like I can help people. I'm happy to provide information about Leeds, the University and the UK, as I know how important this is for an international student, being one myself."

Tihomir Davchev, *Teachers of English to Speakers of Other Languages* MA student, and Link to Leeds ambassador.

International

University tops international survey

The University has been recognised as one of the UK's top universities for international student satisfaction in the International Student Barometer (ISB) autumn survey.

We were ranked first out of all Russell Group universities for student satisfaction across all arrival measures for international students and for overall satisfaction.

Green Impact

Green Impact has had continued success this year, with 49 teams submitting projects for an award. Over 2,300 actions were undertaken on campus in the name of the campaign, which all add up to great changes for the University.

In addition to the 200 staff on teams, 75 students took part this year as project assistants and auditors. Both roles offer great opportunities, and will no doubt help boost the students' employability.

One area in which Green Impact has really made a difference is in University laboratories, with ten labs committing to making a positive change. This helps promote sustainable lab use to colleagues and other members of staff at the University, reducing the impact of our energy-intensive research labs.

Sam McCarthy, from the Sustainability Team, says: "A big well done to all who took part, it is great to see sustainability and positive change throughout the University, and we're all really looking forward to celebrating the success of Green Impact at this year's awards ceremony on Tuesday 4 June."

Sustainability

Love your city – Leave Leeds Tidy



As thousands of students move between properties or away from Leeds each summer, massive amounts of rubbish cause an unsightly mess on the streets surrounding the universities.

However, Leave Leeds Tidy, a project run by the council, universities, Unipol and local charities Emmaus and St Vincent's, has helped save over 60 tonnes of unwanted items from ending up in landfill in the past five years.

Staff and students of the University will be out on the streets of Hyde Park and Headingley to

collect unwanted goods throughout June. These items will go on to be recycled, redistributed to those in need or resold in charity shops, including the University's own Love Leeds charity shop located in the Student Union Building.

To find out more about how you can help to leave Leeds tidy, visit www.leaveleedstidy.com

Sustainable success at LUU

Leeds University Union (LUU) has had a winning streak recently, taking home three awards recognising its positive approach to sustainability.

For the second year in a row, the Union has been awarded gold accreditation in the Green Impact scheme at the Green Impact students' unions awards. It also won Green Impact's Union of the Year – Large Trading award for achieving the highest score.

LUU also took home the Epona Ethical Procurement award for the refurbishment of the Hidden Cafe. The cafe has been re-imagined with a sustainability mission statement – from the type of coffee served to the energy efficiency of the appliances and the sourcing of the furniture – all aiming to

reduce the cafe's carbon footprint, promote locally sourced food and increase the profile of sustainability issues with customers.

The final award, the Co-op International Development award, was given to Leeds RAG's Uganda project, which is entirely student led. Last year a group of around 80 volunteers made the trip to Uganda to work with Ugandan charity Soft Power Education, which works with the Ugandan government to build classrooms and provide primary school teachers in schools that need them.



Members of LUU at the Green Impact Students' Union awards.

In the news



Dr Victoria Honeyman (School of Politics and International Studies) was interviewed by several media channels last month during discussion of the life and legacy of the **former Prime Minister Margaret Thatcher**. In particular, Dr Honeyman commented on the widening of the North–South divide and the increase in social inequality during Baroness Thatcher's premiership. Her comments were broadcast by *BBC News at Ten*, *BBC Radio Leeds* and the *International Business Times*.

Research by Dr Tom Cameron and Professor Tim Benton (School of Biology), which showed that when major environmental and population changes occur, **species can evolve** to adapt to the new conditions more quickly than had previously been thought, received widespread coverage. The study was reported by *BBC News*, *NBC News (USA)*, *Wired*, *Voice of America* and the *Times of India*. Professor Benton also appeared on BBC Radio 4's *Material World* programme to discuss the findings.

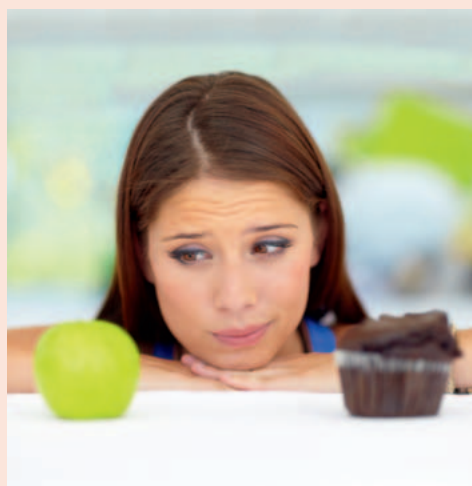
The *Express*, *Times of India*, and *Hindustan Times* all reported on a study led by Professor Philip Conaghan (School of Medicine) on the beneficial effects for **arthritis** sufferers of a simple topical gel treatment called 'Flexiseq'. The gel appears to be as effective in easing pain and restoring mobility as the leading prescription medication for arthritis.

Dr Catriona Morrison (Institute of Psychological Sciences, School of Medicine) appeared in the BBC 1 documentary *If Memory Serves Me Right* to explain to actress Maureen Lipman **how memories begin** to form in childhood.

A report entitled 'Annuities at a tipping point: the case for investment linked annuities', jointly written by Professor John Maule (Leeds University Business School) and Billy Burrows, formed the basis of an article in the *Daily Mail* about how to make the most of a defined contribution pension pot to provide for **retirement**.

Dr Ghazala Mir (School of Medicine) appeared on BBC Radio 4's *Woman's Hour* to discuss her research showing that women in some disadvantaged communities where social networks are weaker could be missing out on support that could potentially reduce high rates of **infant mortality**.

The results of Leeds trials of a smartphone app called **My Meal Mate**, which showed that weightwatchers who used the app to monitor their calorie intake typically lost more weight than those who kept a paper-based food diary, were reported by *TIME* magazine, the *Daily Mail* and the *Huffington Post*. My Meal Mate is the first free app to contain a large UK-based food database. It is also the first such app to be hosted for download on the NHS Choices website. The trials were conducted by Michelle Carter and Professor Janet Cade (School of Food Science and Nutrition).



The *New Internationalist* featured a debate between journalist Daniel Ben-Ami and Dr Dan O'Neill (School of Earth and Environment and co-author with Rob Dietz of *Enough is Enough: Building a Sustainable Economy in a World of Finite Resources*) on whether wealthy nations like the US and UK should pursue continued **economic growth**.

Research jointly led by Dr Roger Parslow (School of Medicine) and researchers from the University of Leicester has shown that **children admitted to intensive care** as emergency cases out of normal hours and at weekends are at no greater risk of death than children arriving during normal working hours. The research findings were reported by *BBC News*, the *Guardian*, *ITV Calendar*, the *Yorkshire Post* and the *Yorkshire Evening Post*.



Research led by Dr Cath Noakes (School of Civil Engineering) has shown that the risk of infection in traditional **'Nightingale' hospital wards** varies dramatically when different ventilation regimes are used. The research showed that keeping the windows closed could increase the risk of infection fourfold. The research findings were reported by *BBC News*, the *Yorkshire Post* and *Yorkshire Evening Post*, and the *Toronto Telegraph*.

A **surgical robot** being developed by a team led by Professor Anne Neville in the School of Mechanical Engineering aroused media interest. Professor Neville appeared on BBC1's *The One Show* to explain how the robot was inspired by the sticky feet of tree frogs in the way it moves around inside the human body.

Our people/honours



Laura Mills

Geography undergraduate **Laura Mills** was runner-up undergraduate in the Environment Agency's Pollution Challenge competition. Laura's presentation proposed a campaign to change public perception of river water quality and to introduce new methods to measure and eradicate pollution. Undergraduate Jennifer Scattergood's project was also among the 18 that made the finals.

The University has been recognised as a Beacon of Good Practice for its financial reporting by the British Universities Finance Directors Group (BUFDG). The BUFDG's Financial Reporting Group asked key audit firms for the sector to put forward excellent examples of financial accounts from their client base, and the University's was cited as a "clear report on a large Russell Group university". The Beacons of Good Practice scheme aims to celebrate excellence and raise standards by setting a benchmark.

"Receiving this recognition is fantastic, as the preparation of our Annual Report and Accounts is a real team effort," says Ellie Griffiths, Deputy Financial Controller. "Everyone involved pulls out all the stops to ensure we produce a document which is as interesting, transparent, and understandable as possible."

David Beech, Professor of Cardiovascular Science in the School of Biomedical Sciences, has been awarded a Fellowship of the Academy of Medical Sciences.

Fellowships are awarded in recognition of excellence in medical research, innovation application of scientific knowledge, or for conspicuous service to healthcare. The 44 new fellows this year were chosen from 351 candidates. Professor Beech will be formally admitted to the Academy in June.

Professor Peter Mackie (Institute for Transport Studies) has been appointed to a new panel of experts to advise the UK government on aviation capacity needs. The Airports Commission panel brings together leading experts in the field, to help ensure that its recommendations are informed by the very best scientific and technical expertise. Professor Mackie is joined in this advisory role by Faculty colleague **Piers Forster**, Professor of Physical Climate Change (School of Earth and Environment), giving the University two representatives on the panel of 13 national experts. More details are at <http://goo.gl/7NPBf>

Alumna **Katy Rudd** – BA (Hons) Theatre and Performance Studies – is the Resident Director of the National Theatre's production of *The Curious Incident of the Dog in the Night-Time*, which recently won seven Olivier Awards.

Congratulations to **Paul Marchant**, Faculty Management Accountant at Leeds University Business School, who came first in the over-40s category of this year's London Marathon with a time of 02:27:29. This was Paul's fourth marathon, and he ran to raise money for the Motor Neurone Disease Association. His fundraising page is at www.justgiving.com/Paul-Marchant2/



Three Leeds research leaders have been appointed as Royal Society Wolfson Research Merit Award holders. The newly appointed award holders are:

Professor Adrian Goldman (School of Biomedical Sciences) for study of the structure and function of proton and sodium membrane integral pumps

Professor Anne Neville (Institute of Engineering Thermofluids, Surfaces and Interfaces) for study of understanding surfaces at the centre of engineering system performance

Professor Oliver Phillips (School of Geography) for study of tropical forests in the changing earth system

Jointly funded by the Wolfson Foundation and the Department for Business, Innovation and Skills, the scheme aims to provide universities with additional support to enable them to attract science talent from overseas and retain respected UK scientists with outstanding achievement and potential.



Professor Anne Neville

The University has been shortlisted for an award at this year's Institute of Fundraising (IoF) National Awards, in the Best Donor Development Campaign category, for its alumni fundraising efforts. Winners will be revealed at the IoF National Awards Ceremony celebratory dinner in July.

Professor Edward Spiers (School of History and Pro-Dean for Research Evaluation) received the Templer Medal from the Society for Army Historical Research for *A Military History of Scotland* (Edinburgh University Press, 2012). He co-edited the volume with Jeremy Crang (Edinburgh) and Matthew Strickland (Glasgow). In addition to the medal, awarded annually for the most significant contribution to the history of the British army, the book has received the Saltire Prize for the best Scottish history book of 2012.

News

Alumnus John Priestley becomes Footsteps Fund's 10,000th donor



"If I give a little back – and others do too – then it will make a real difference to the students of today."

Almost 50 years since he graduated, retired lawyer John Priestley is one of the growing number of former students giving financial support to their modern counterparts. He recently became the 10,000th person to support the Footsteps Fund, which channels gifts from alumni into a range of projects across campus – such as scholarships for students from disadvantaged backgrounds, and opportunities for undergraduates to join research projects or take part in volunteering.

John came to Leeds in 1961 to study law and on graduation entered his father's law practice, eventually rising to become managing partner.

His lifetime in law saw many changes: "When I started, it was a true profession. If someone came in with a problem, you dealt with it,

whether you were paid or not. Money was not the object. Now, if they haven't got the money, they are out of the door. It's not a change for the better and I know my father would be shocked."

Now in retirement and living near Otley, John is free to indulge his long-time pastimes – vintage tractors, birdwatching, coin-collecting and walking – to which he has added a new-found interest in cake-making and dry-stone walling.

Retirement has also given him the opportunity to reflect on his own career and the part that university played in his development. "All the publicity about cuts and the cost of going to university really got me thinking. I was very fortunate that I went to university for nothing.

"It's a stepping stone for people to get from one place to another. It can really help those who are bright and ambitious – and it is great to be able to support that."

Small ads

Professional services

ELECTRICIAN. PART P REGISTERED Contact Good Connections for repairs, installations, alterations, periodic inspections and PAT testing. Prompt timekeeper. Good value rates. www.goodconnectionselectrician.co.uk
Richard Sykes 0777 249 9414
good_connections@btinternet.com

DIRECT D-STRESS (CHINESE PHYSIO-MASSAGE)
Highly recommended by staff members - back pain and stress specialist in The Edge. Sports injury, back/shoulder problems, neck pain, joints pain, headaches/migraine, preventative relaxation massages. 10% discount for staff www.directd-stress.co.uk
0113 230 7212 lily@directd-stress.co.uk

LEGAL ADVICE
Divorce, separation, children and financial disputes, pre-marital and cohabitation agreements, Collaborative Family Law and Mediation. FREE INITIAL HALF-HOUR MEETING
Contact Paul Lancaster 0113 207 0000
plancaster@LawBlacks.com

BUILDING, ROOFING AND JOINERY
Extensions, house renovations, new roofs, PVC fascias and guttering, bathrooms and kitchens fitted, wall tiling, plastering. 30 years' experience.
Free quotation Malcolm Wells 0789 545 9542
www.mywconstruction.co.uk

TAX ADVICE and help with your tax return. Save tax, worry and time. Visit 10 Blenheim Terrace (almost on campus) for a free consultation. Discover how professional accountants, familiar with University staff needs, will benefit you.
Christopher Smart, www.volans.co.uk, csmart@volans.co.uk

Holiday home to let

STAITHES WATERFRONT FISHERMAN'S COTTAGE
Outstanding North Yorks location, WiFi.
www.northside-cottage.co.uk
bookings@northside-cottage.co.uk

House/flat/room to let

4 BEDROOM HOUSE TO LET in Pudsey LS13 4QD, big garden (but no gardening!), great views; from September 2013 through August 2014.
Contact Jurgen Neuberg, 0113 219 4643
or J.Neuberg@leeds.ac.uk

3 BEDROOM HOUSE CHAPEL ALLERTON
Spacious modern house, garage, large communal gardens, great access Chapel Allerton/Leeds centre. Suit professionals/young couple/small family. £675 pcm. See www.mudhut.com/p/238695 for details. £675 pcm.
Contact Chris on 0796 875 9436
or chrissymilk@hotmail.com

2 BEDROOM TERRACED HOUSE in a village location east of Leeds with excellent transport links. £350 per calendar month.
P.J.Murphy@leeds.ac.uk or 0791 333 0042

PARIS
Beautiful, spacious, furnished one-bedroom apartment, Place Gambetta in heart of the 20th arrondissement. Southern exposure. Large open plan dining/living flooded with light. Stunning view over park. €2000 pm, all inclusive. Pictures available on request.
Contact ruedesgatin@gmail.com

For sale

4 BEDROOM SEMI HEADINGLEY
Yorkshire stone, old features, nice garden, quiet conservation area, 15-minutes walking distance to campus www.rightmove.co.uk/property-for-sale/property-26712024.html or p.knippertz@leeds.ac.uk

Small ads can be submitted online at <http://smallads.leeds.ac.uk> The charge is £7 for 10 words or part thereof (University members) or £10 (general public). The deadline for the next issue is 26 June at 4pm. Advertisers are independent of the University. The University makes no warranty or representation as to (a) the accuracy of ads or (b) the quality of goods or services advertised. To the full extent allowed by the law the University excludes all liability. Contact Emma Morris on (0)113 343 8373 or e.l.morris@adm.leeds.ac.uk

Events

Staff Festival – 5 July

This year's Festival is themed around nature, so expect a day of exciting workshops, craft and food market, activities for children and adults, scrumptious food and drink, live performance and new experiences.

It takes place on **Friday 5 July** in and around the Refectory, LUU building and stage@leeds. From 1pm enjoy a 'Taste of the Fest' whilst browsing stalls or enjoying the food and drink on offer. Between 3–7pm the main event gets underway, after which people are free to carry on relaxing in the Terrace Bar.

Full details can be found at www.leeds.ac.uk/staff_festival



Get in shape for summer

So far this year has hardly been a scorcher but from 1 June a sizzling summer promotion from **The Edge** will leave you wanting to cool off in the pool!

The Edge is offering the opportunity to enjoy ten consecutive days of premium membership for only £20. It's the perfect way to try out the fantastic facilities, including the 25m swimming pool, 200-station state-of-the-art fitness suite and extensive class programme.

This offer is available from 1 June and will run throughout July and August. Sign-up is easy and simple: come to The Edge reception and you could be using the fantastic facilities in minutes. You may purchase as many offers as you wish. The last date to buy the promotion is 31 August 2013.

For further information, speak to a member of the Sales and Marketing Team, email edgemembership@leeds.ac.uk or call **(0113) 343 7406**



AUA networking event

The **AUA** (Association of University Administrators) Network at the University will be holding an informal networking event at The Terrace, Leeds University Union on Friday 5 July, 2–3pm.

All existing members of AUA based at the University are invited and anyone interested in finding out more about the association and the benefits of membership are also welcome.

Attendees are invited to bring along a 'top tip' they've put into practice at work over the past year that has saved time, made a process simpler, or received positive feedback from peers or colleagues.

To assist with introductions on the day, anyone interested in attending is asked to email aua@leeds.ac.uk. Further information about the association and its work is available at www.leeds.ac.uk/aua/ and www.aua.ac.uk

Festival of Arts

In June and July, the University of Leeds will be running its third Festival of Arts. The University, the city of Leeds and the county of Yorkshire as a whole have a rich and varied heritage of arts and culture dating back hundreds of years. The festival aims to celebrate this heritage and make accessible the fantastic variety that the University of Leeds in particular has to offer to those people in the region and those from further afield.

The festival will include numerous events for schools and a range of activities open to the general public. For a copy of the brochure outlining the events or for further information, please contact artsfestival@leeds.ac.uk **0113 343 7640** or visit www.leeds.ac.uk/arts/artsfestival

PGR showcase – save the date!

The 4th annual **University of Leeds Postgraduate Research Conference** will take place on Monday 2 December and entries for the various competitions to be held are now being welcomed.

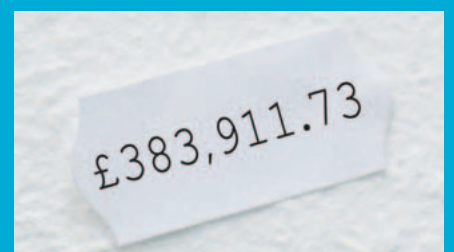
The conference is a University-wide showcase of postgraduate research and a celebration of the significant contribution postgraduate researchers make to the research profile of the University.

For more information about the conference, the various competitions and how to enter, please visit www.pgrconference.leeds.ac.uk

University Fine Art degree show

The University's Fine Art degree show, **£383,911.73** – named after the combined student tuition fees of the 40 artists – will be opened by the Lord Mayor of Leeds and the Lord Mayor's consort on Thursday 13 June at the School of Fine Art, History of Art and Cultural Studies.

The show will be open from 14 to 19 June, 10am to 5pm, in the Old Mining Building and Lifton Studios. A symposium and late night opening, which will critically discuss current economic and social developments affecting art and education, will take place on 17 June from 10am to 8pm.



FAQs

John Frankland, Interim Impact and Innovation Manager, Research and Innovation Service

What does your role involve?

I manage the Impact and Innovation Support Team in the Research and Innovation Service (RIS), providing support to the 14 sector hubs, managing and delivering the national KTP programme and proactively sourcing and managing impact and innovation funding at an institutional level.

What did you do before you took up this new post?

Prior to starting at Leeds, I spent a year travelling and working as a freelance consultant. My travels took me across the United States, from coast to coast, by train. It's a fantastic way to travel and you really begin to appreciate what a vast a beautiful country it is. Before that I spent six years at the University of Hull as Deputy Director of the Knowledge Exchange, Hull's equivalent of RIS.

In two sentences describe the sector hubs.

The sector hubs are outward-facing, challenge-driven, multi-disciplinary entities that channel and focus the University's considerable skills and expertise to address the sector's needs. At the same time, they serve as an open conduit for the sector to influence and shape the University's research and external engagement agendas.

The 14 areas covered by the hubs are very different. How did you set about acquiring a good understanding of all of them?

My first port of call was to meet with each of the Hub Innovation Managers. They're the people 'on the ground', and are engaging with representatives from the sector on an almost daily basis. At the same time, they're active in each of the faculties, identifying areas of academic expertise and marrying the two together. It's a steep but enjoyable learning curve for me.

Give us examples of the hubs working with external partners.

There are a number of good examples of the sector hubs working with external partners across a broad spectrum of activities and issues. The Cultural and Creative Industries Exchange Hub is about to engage on a piece of work with M&S around store design and layout, linked to the company's demographic target market. The Climate and Geohazards Services Hub has a long-standing relationship with the Met Office and is building strong collaborations with the re-insurance industry.

The hubs also work collaboratively with external partners. For example, the Social Care, Healthcare Services and Professional Services Hubs are working jointly with the third sector in Leeds on a capacity and capability building programme that will greatly help the sector move forward.

What are your objectives for the hubs in the next year?

Given that we're now at the midpoint of the current HEIF funding cycle, each of the hubs is about to undertake a refresh of its delivery plan. I'd like to see the hubs continue to strengthen and build on their already strong relationships across the sectors they're engaged with, as well as across the various faculties, schools and institutions within the University.

What's your most frequently asked question?

'Where do you see the sector hubs going?' My response is that I see the hubs as an integral part of the University's long-term strategy for engagement and knowledge exchange with key sectors of the UK economy. They've made great inroads to date and they're here to stay.



You must get around campus quite a bit. What's your favourite part?

I'm a fan of the Hidden Cafe as the coffee and cakes (my biggest downfall!) there are great. I think this is a great campus with some really varied and stunning architecture. It also feels a friendly, open and welcoming environment to work in.

What do you like to do in your spare time?

I'm a karate instructor and have been practising karate for almost 25 years – there are some days when I feel it more than others! I'm also a bit of gym addict and do a lot of running and swimming. When I'm not rushing about like a maniac, I can think of nothing better than settling down with a good book and a mug of decent strong black coffee.

Which book, song and gadget would be in your desert island kitbag?

My trusty Swiss army knife would be my gadget of choice – to build fires, hammocks, shelters, etc, even though my DIY skills are non-existent. My book would be Robert Twigger's *Angry White Pyjamas: An Oxford Poet Trains with the Tokyo Riot Police*, and my song would be Elgar's *Pomp & Circumstance* just because I'd be feeling very high and mighty on my own desert island!